

PLANT SCHEDULE - IN PROGRESS

Trees & Shrubs

Key	Quantity	Botanical Name	Common Name	Size	Root	Remarks
HARDWOOD FOREST EDGE - UPLAND						
AS	4	Acer saccharum	Sugar maple	2.5-3" cal	B # B	
ARA	16	Acer rubrum	Red maple	3.5-4" cal	B # B	
ARB	5	Acer rubrum	Red maple - clump	12-14" cal	B # B	2 trunks min.
ARC	4	Acer rubrum	Red maple	2-2.5" cal	B # B	
BAA	1	Betula alleghaniensis	Yellow birch	6-8" Height	B # B	single trunk
BAB	1	Betula alleghaniensis	Yellow birch	5-6" Height	B # B	single trunk
BPA	2	Betula papyrifera	Paper birch	14-16" Height	B # B	single trunk
BPB	4	Betula papyrifera	Paper birch - clump	10-12" Height	B # B	2 trunks min.
BN	1	Fraxinus nigra	Black ash	5-6" Height	B # B	2 trunks min.
CV	5	Ostrya virginiana	Hophornbeam	8-10" Height	B # B	
PSA	4	Pinus strobus	White pine	10-12" Height	B # B	
PSB	12	Pinus strobus	White pine	6-7" Height	B # B	
QA	6	Quercus alba	White oak	3.5-4" cal	B # B	
QR	10	Quercus rubra	Red oak	2"-2.5" cal	B # B	
VA	30	Viburnum acerifolium	Maple-leaf viburnum	12"	B # B/Container	
AC	16	Amelanchier canadensis	Shadblow Serviceberry	56" ± 48" ht.	B # B/Container	
HV	11	Hamamelis virginiana	Witch hazel	56" ± 48" ht.	B # B/Container	
TCA	10	Taxus canadensis	Eastern Hemlock	4" Height	B # B/Container	
TCD	20	Taxus canadensis	Eastern Hemlock	2" Height	B # B/Container	

SHRUBS

20	Ilex verticillata	Winterberry holly	48" Height	B # B/Container	
20	Rhamnus alifolia	Alder-leaved buckthorn	36" Height	B # B/Container	
40	Lonicera oblongifolia	Swamp-ly honeysuckle	24" Height	B # B/Container	confirm nursery propagation
30	Cornus sericea	Red-osier Dogwood	36" Height	B # B/Container	
40	Viburnum dentatum	Arrowwood	24" Height	B # B/Container	
20	Spiraea alba	Spiraea	24" Height	B # B/Container	
20	Salix discolor	Pussy Willow	4-5" Height	B # B/Container	

NOTES FOR PLANT LIST:

1. SHRUBS AVERAGE 56" O.C., STAGGERED GROUPS OF 5-10 PLANTS PER SPECIES PER GROUP.

Herbaceous Plants

Key	Quantity	Botanical Name	Common Name	Size / Spacing	Root	Remarks
BASIN BOTTOM (SHALLOW ERODENT HARSH)						
AC	36	Acorus calamus	Sweet Flag	12" on center	5" plug	
CV	76	Carex vulpinoidea	Foxtail sedge	12" on center	5" plug	
CC	155	Colymbagrostis canadensis	Bluejoint grass	12" on center	5" plug	
CS	225	Carex stricta	Tussock sedge	12" on center	5" plug	lowest areas of the basin
CG	155	Chelone glabra	White Turtlehead	12" on center	5" plug	
EP	342	Eupatorium perfoliatum	White Boneset	12" on center	5" plug	
HC	140	Hydrilla canadensis	Canada marnogras	12" on center	5" plug	
IV	45	Iris versicolor	Blue Flag Iris	12" on center	5" plug	
JE	114	Juncus effusus	Common Rush	12" on center	5" plug	
JC	171	Juncus canadensis	Canada rush	12" on center	5" plug	
LC	45	Lobelia cardinalis	Cardinal Flower	12" on center	5" plug	
OC	55	Osmunda cinnamomea	Cinnamon fern	18" on center	6" pot	lowest areas of the basin
SC	57	Scirpus cyperinus	Moorgrass	12" on center	5" plug	
VH	152	Verbena hastata	Blue vervain	12" on center	5" plug	
With Basin Bottom Seed Mix & Coir Matting. Similar to detail 4/D-L5.2						
BASIN SIDE SLOPES/ DAMP AREAS						
EP	646	Eupatorium fistulosum	Joe Pye Head	12" on center	5" plug	
OS	114	Osmunda sensibilib	Sensitive fern	18" on center	6" pot	
OCL	155	Osmunda claytoniana	Interrupted Fern	18" on center	6" pot	
RL	515	Rudbeckia laciniata	Green Eyed Coneflower	12" on center	5" plug	
With Basin/Swale Seed Mix & Jute Matting. Similar to detail 4/D-L5.2						
SWALE						
CV	261	Carex vulpinoidea	Foxtail Sedge	12" on center	5" pot	lowest areas - near basin
EP	204	Eupatorium fistulosum	Joe Pye Head	12" on center	5" pot	
IV	255	Iris versicolor	Blue Flag Iris	12" on center	5" plug	lowest areas - near basin
LB	45	Lobelia siphilitica	Blue Lobelia	12" on center	5" plug	
OCL	152	Osmunda claytoniana	Interrupted Fern	18" on center	6" pot	
VN	152	Veronica noveboracensis	New York Ironweed	12" on center	5" plug	
With Basin/Swale Seed Mix & Coir Matting - See Detail 4/D-L5.2						
SHADY SWALE						
OCL	204	Osmunda cinnamomea	Cinnamon fern	18" on center	6" pot	lowest areas - near basin
CG	204	Chelone glabra	White Turtlehead	12" on center	5" plug	lowest areas - near basin
OS	210	Osmunda sensibilib	Sensitive fern	18" on center	6" pot	lowest areas - near basin
With Basin/Swale Seed Mix & Coir Matting - See Detail 4/D-L5.2						

NOTE FOR PLANT LIST:

1. For Herbaceous plants, plant in irregularly spaced clumps of 10 to 20 for natural appearance. Intermix species on edges of each group.

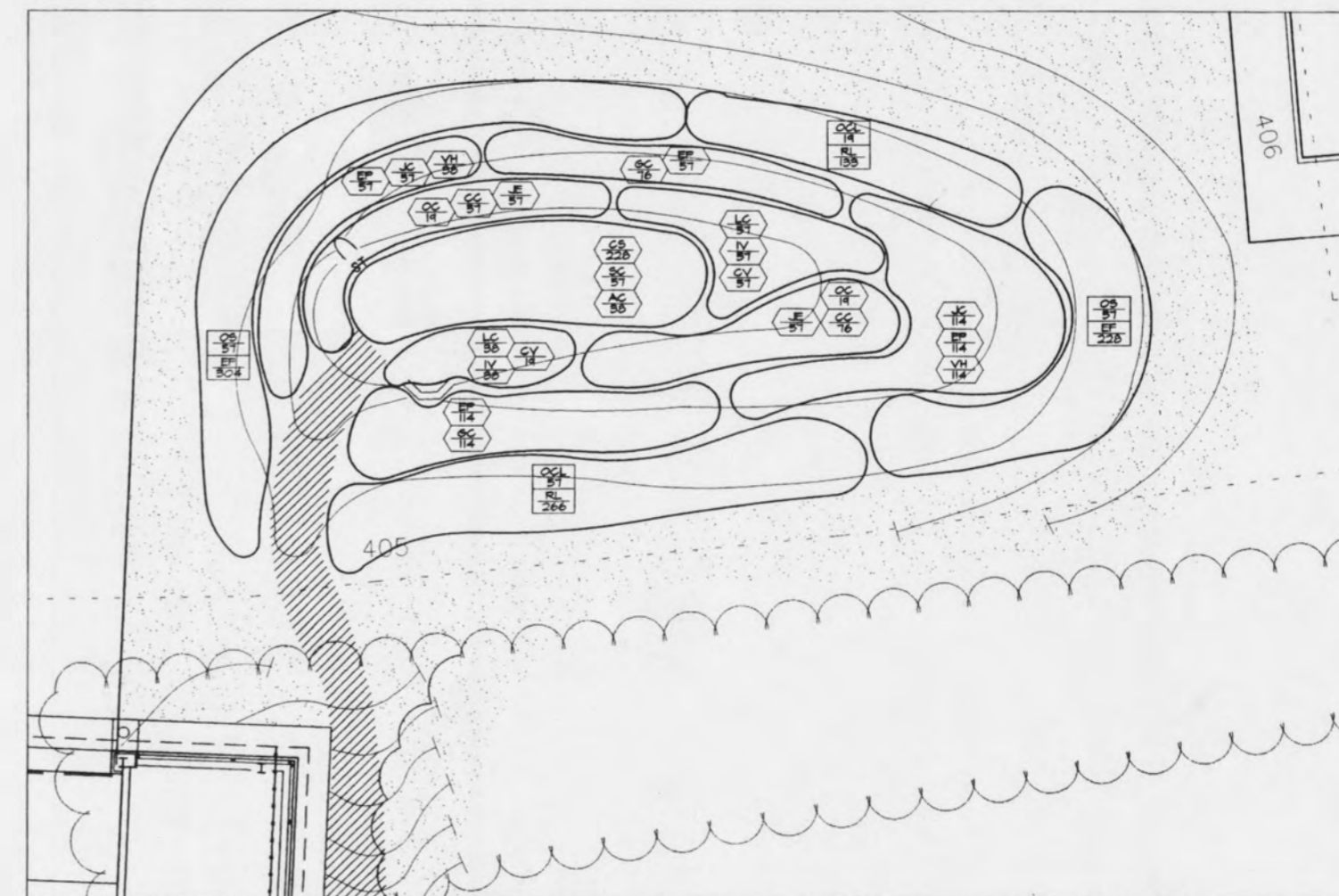
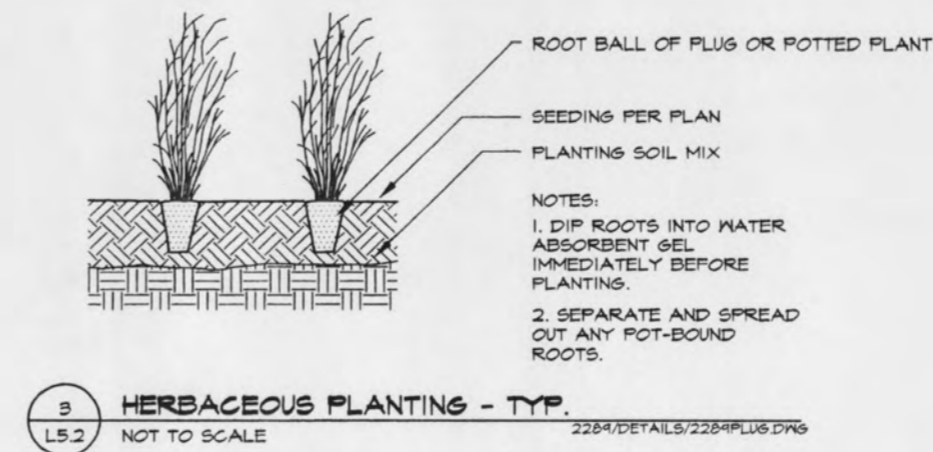
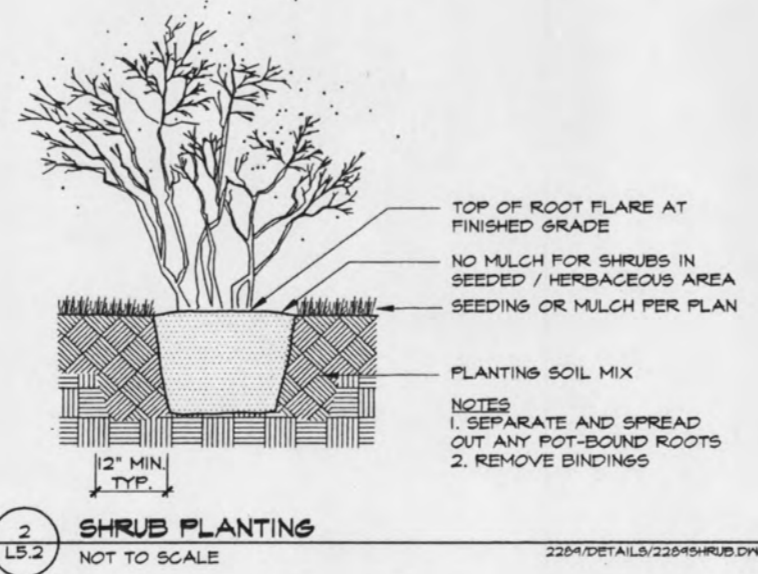
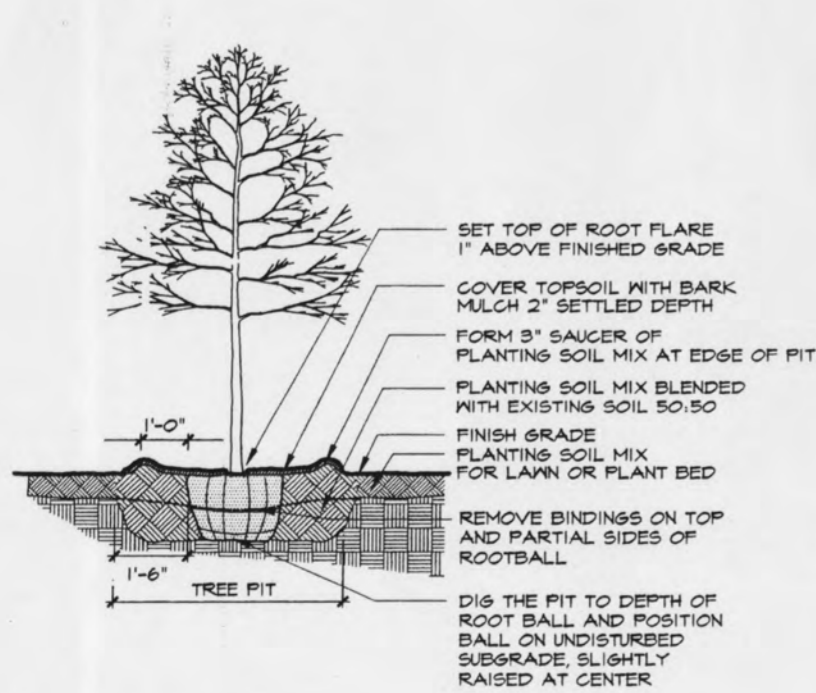
Lawn Seeding & Mulch Areas

Key	Description
(Pattern)	No-Mow Lawn Seed Mix (Informal lawn) see specifications
(Pattern)	Turf Seed Mix see specifications

Note: Swales and basin receive Basin/Swale Seed Mix

Notes

- PLANTING SOIL MIX DEPTH 6" (WITH 6" MIN SUBSOIL) WHERE LAWN, PLANTING & MULCH IS SHOWN. LOCATIONS TO BE DETERMINED IN FIELD WITH LANDSCAPE ARCHITECT.
- ONE MONTH (MINIMUM) PRIOR TO TREE INSTALLATION, CHECK SOIL DEPTH AT TREE LOCATIONS. NOTIFY LANDSCAPE ARCHITECT IF LEDGE IS ENCOUNTERED WHICH WILL INTERFERE WITH PLANTING OPERATIONS.
- STAKE LOCATIONS OF NEW TREES & SHRUBS BEFORE EXCAVATING PLANT PITS. PLAN OF UTILITIES BEFORE BEGINNING PLANTING. REVIEW WITH LANDSCAPE ARCHITECT. ADJUST AS REQUESTED.
- COORDINATE LOCATIONS OF NEW PLANTINGS WITH UTILITIES. OBTAIN 'AS-BUILT' PLAN OF UTILITIES BEFORE BEGINNING PLANTING. REVIEW WITH LANDSCAPE ARCHITECT.
- REPAIR VEGETATIVE COVER OVER UTILITY TRENCHES NOT SHOWN ON THIS DRAWING BY MATCHING ADJACENT LANDSCAPE TREATMENT: MULCH OR LAWN.
- PROVIDE THE QUANTITY OF EACH PLANT INDICATED ON THE PLANTING PLAN IF THOSE QUANTITIES DO NOT AGREE WITH THE QUANTITIES SHOWN IN THE PLANT LIST.
- SEE D-L5.2 FOR GENERAL NOTES AND ABBREVIATIONS.
- MULCH DISTURBED WOODLAND EDGES WITH 2" DEEP SHREDDED LEAF LITTER MULCH (UNLESS OTHERWISE NOTED).



ARCHITECT
KIERAN TIMBERLAKE
ASSOCIATES LLP
20 NORTH THIRD STREET
PHILADELPHIA, PA 19104
PHONE: 215-922-6400
FAX: 215-922-4680
ktd@kierantimberlake.com

STRUCTURAL ENGINEER
CVM ENGINEERS
85 OLD EAGLE SCHOOL ROAD
WAYNE, PA 19088
PHONE: 215-989-3800
FAX: 215-989-3677

MEP/PE ENGINEER
LUNDAQUIST, KILLEEN,
POTVIN & BENDER, INC.
1035 WEST COUNTY ROAD 92, SUITE 300
ST. PAUL, MN 55113-2722
PHONE: 651-633-1222
FAX: 651-633-1333

CIVIL ENGINEER
PHELPS ENGINEERING, INC.
FROG HOLLOW HILL
3 MILL STREET
MIDDLEBURY, VT 05753
PHONE: 802-368-7829
FAX: 802-368-9442

ECOLOGICAL PLANNING & DESIGN
ANDROPOGON ASSOCIATES, LTD
10 SHURS LANE
PHILADELPHIA, PA 19127
PHONE: 215-487-0700
FAX: 215-483-7520

ATWATER
COMMONS
DINING
HALL

MIDDLEBURY
COLLEGE
MIDDLEBURY, VERMONT

KTA PROJECT NO. 627
AA PROJECT NO. 2289

PLANT LIST & DETAILS

SCALE: As Noted
DRAWN BY: HK/TM
CHECKED BY: JBN/MT
CAD FILE: 2289PL.DWG
DATE: 16 OCTOBER 02

REVISIONS	DATE	DESCRIPTION

D-L5.2