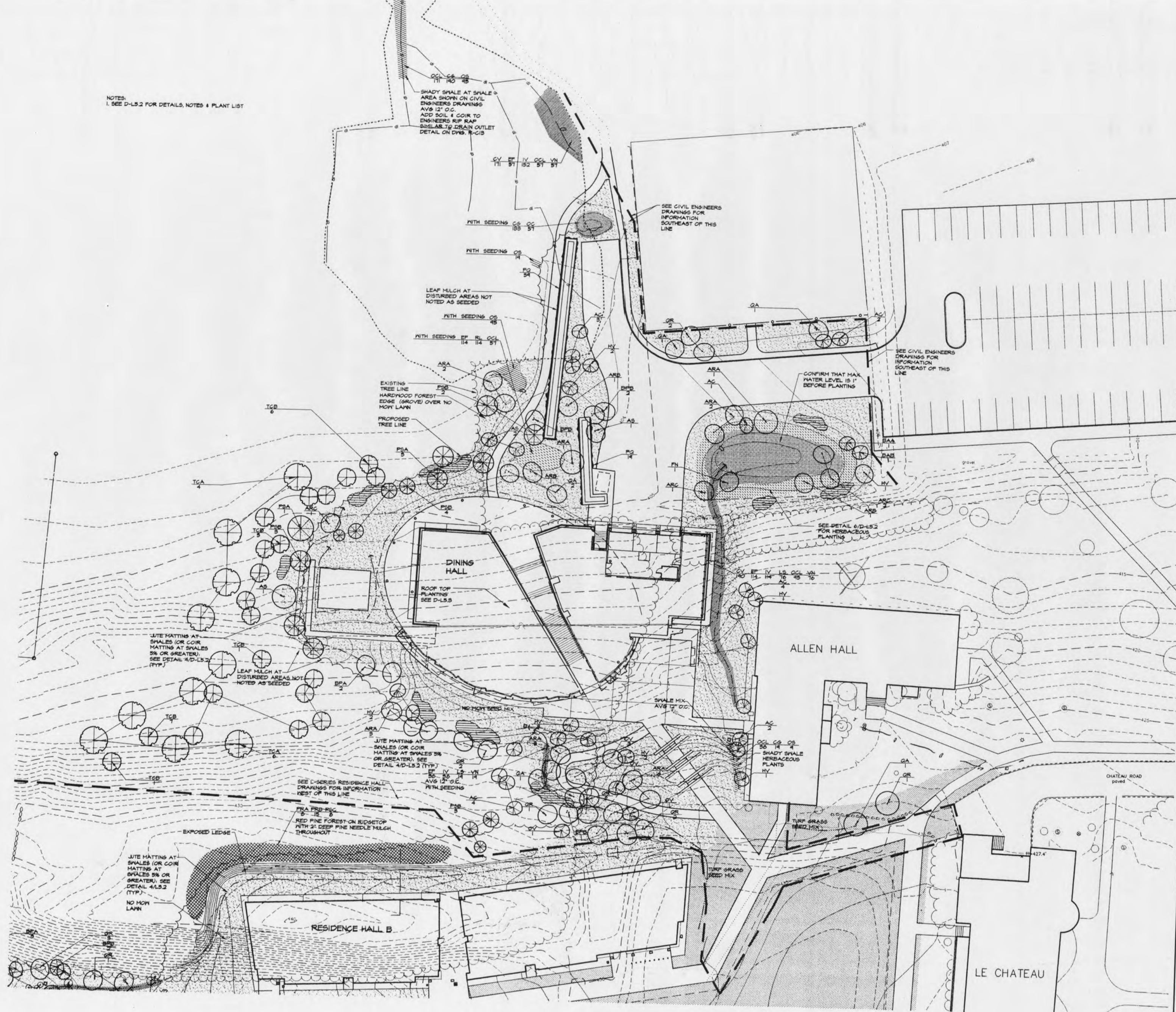


NOTES:
1. SEE D-L5.2 FOR DETAILS, NOTES & PLANT LIST



ARCHITECT
KIERAN TIMBERLAKE ASSOCIATES LLP
20 NORTH THIRD STREET
PHILADELPHIA, PA 19104
PHONE: 215-922-4400
FAX: 215-922-4480
kta@kierantimberlake.com

STRUCTURAL ENGINEER
CVM ENGINEERS
85 OLD EAGLE SCHOOL ROAD
WAYNE, PA 19088
PHONE: 215-989-3800
FAX: 215-989-3677

MPEFF ENGINEER
LUNDOUST, KILLEEN, POTVIN & BENDER, INC.
1925 WEST COUNTY ROAD #2, SUITE 300
ST. PAUL, MN 55113-2722
PHONE: 651-633-1223
FAX: 651-633-1335

CIVIL ENGINEER
PHELPS ENGINEERING, INC.
3 MILL STREET
MIDDLEBURY, VT 05753
PHONE: 802-388-7829
FAX: 802-388-9442

ECOLOGICAL PLANNING & DESIGN
ANDROPOGON ASSOCIATES, LTD
10 SHURS LANE
PHILADELPHIA, PA 19127
PHONE: 215-487-0700
FAX: 215-483-7520

ATWATER COMMONS DINING HALL

MIDDLEBURY COLLEGE
MIDDLEBURY, VERMONT

KTA PROJECT NO. 437
AA PROJECT NO. 2289

PLANTING PLAN

SCALE: 1" = 20'
DRAWN BY: JEN
CHECKED BY:
CAD FILE: 2289PLDWG
DATE: 16 OCTOBER 02

REVISIONS	DATE	DESCRIPTION

D-L5.1