



Bridge 85 Northbound 5/30/1962



Bridge 85 American Bridge Company 1903 5/30/1962



Small Trestle just North of Bridge 85 5/30/1962



Southbound @ Bridge 85 5/30/1962



Small Bridge North of Bridge 85 5/30/1962



Southbound - Siding to Left Leads to Gravel Pit South of South
Wallingford 5/30/1962



Siding into Gravel Pit Looking South 5/30/1962



Northbound in Gravel Pit 5/30/1962



South End of Siding to Gravel Pit 5/30/1962



Bridge 87 Northbound American Bridge Co. 1903 5/30/1962



Bridge 87 5/30/1962



Bridge 87 5/30/1962



South Wallingford 1950



South Wallingford Section House 5/30/1962



South Wallingford Northbound 5/30/1962



Northbound South Wallingford Station on Left 5/30/1962



South Wallingford Southbound 5/30/1962



South Wallingford 10/9/1961



South Wallingford Southbound 5/30/1962



West View South Wallingford 5/30/1962



Southbound 5/30/1962



Bridge North of South Wallingford 5/30/1962



Southbound 5/30/1962



Southbound 5/30/1962



Bridge 89 Northbound American Bridge Co. 1903 5/30/1962



Bridge 89 5/30/1962



Bridge 89 Southbound 5/30/1962



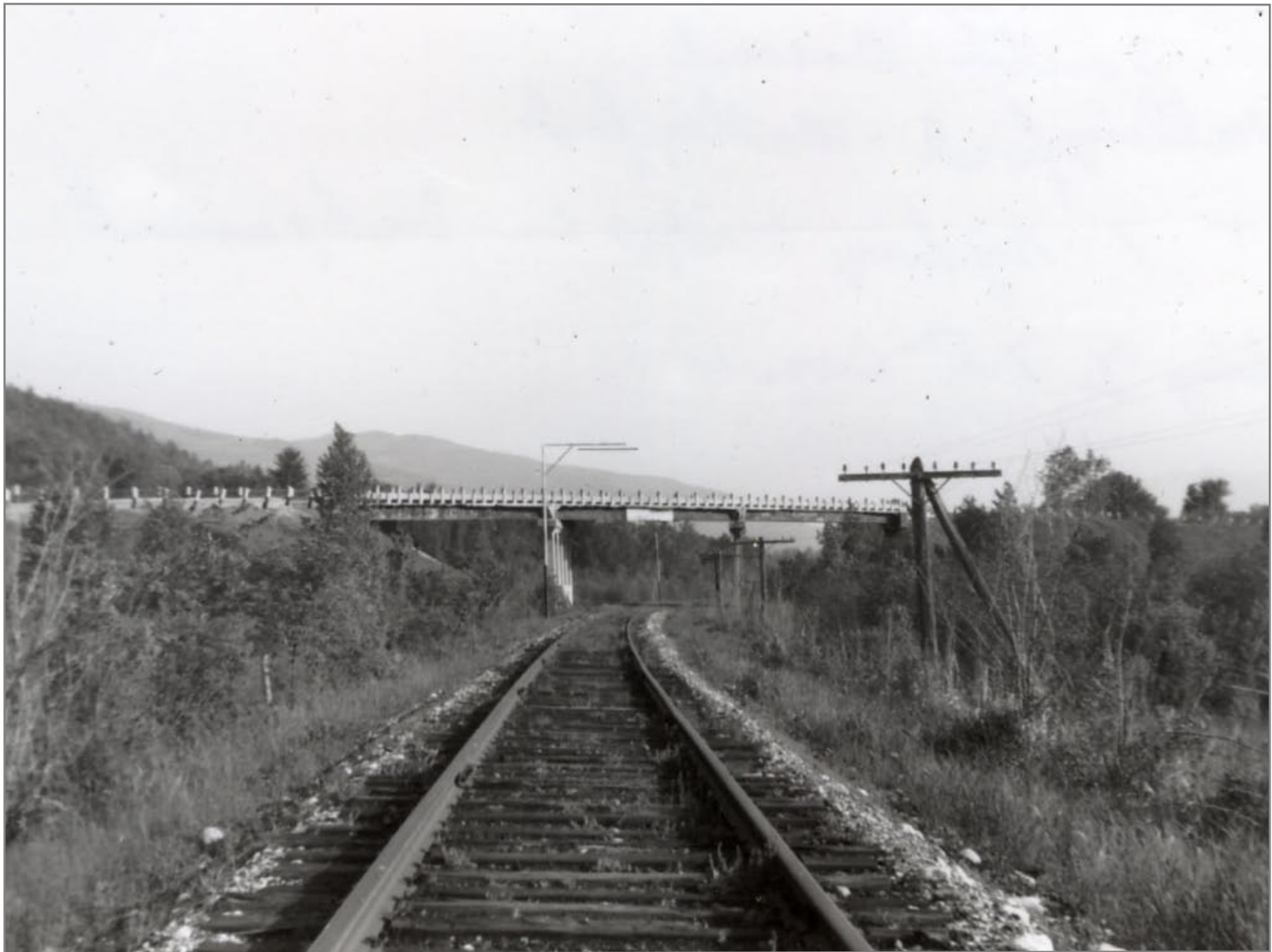
Southbound 5/30/1962



Northbound From Route 7 Bridge Looking to Wallingford
5/30/1962



Southbound Looking Under Route 7 Bridge #350 BLT, 1937
5/30/1962



Southbound 5/30/1962



Northbound 5/30/1962



Southbound Route 7 Bridge in Distance 5/30/1962



Northbound into Wallingford 5/30/1962



Northbound Wallingford Station on Right 5/30/1962



Southbound out of Wallingford 5/30/1962



Northbound into Wallingford 5/30/1962



Looking East @ 1st Crossing South of Wallingford 5/30/1962



East View of 1st Crossing North of Wallingford Station
6/2/1962



Bridge 91 South of Wallingford Station 5/30/1962



Suthbound thru bridge 91 Wallingford 5/30/1962



Bridge 91 Wallingford - Section House on Right 5/30/1962



Bridge 91 Wallingford



Section House Wallingford 6/2/1962



Wallingford Station Looking South 6/17/1962



Rutland 6082 in Wallingford 6/2/1962



Wallingford Northbound 8/18/1961



Wallingford Station 6/17/1962



Wallingford



Wallingford



Northbound @ North End of Station Platform 6/2/1962



Southbound Wallingford Station on Left 6/2/1962



Southbound Wallingford - American Fork & Hoe on Right
6/2/1962



Southbound Wallingford 2nd Crossing North of Wallingford
Station - True Temper on Right 6/2/1962



Northbound 1st Crossing North of Wallingford Station
6/2/1962



2nd crossing North of Wallingford Station 6/2/1962



Northbound Wallingford True Temper Corp. 6/2/1962



Southbound Wallingford - True Temper on Right 6/2/1962



Northbound 6/21/1962



Southbound 6/2/1962



West View near MP 46 North of Wallingford



Southbound Route 7 on Right 6/2/1962



Bridge 92 North of Wallingford 6/2/1962



Bridge 92 6/2/1962



Southbound - 3rd Crossing North of Wallingford 6/2/1962



West View 3rd Crossing North of Wallingford 6/2/1962



Northbound 6/2/1962

East View of Town Line Sign Wallingford to Right -
Clarendon to Left 6/2/1962





Northbound toward Clarendon 6/2/1962



Northbound @ Bridge 93 American Bridge Company BLT
1902



Bridge 93 6/2/1962



Southbound Bridge 93 6/2/1962



Bridge 94 Southbound 6/2/1962



Bridge 94 Northbound American Bridge Co. 1903 6/2/1962



Bridge 94 6/2/1962



Abandoned Crossing at Former Site of Clarendon Station on
Right Side of Tracks 6/2/1962



North End of Clarendon Siding - Station Site on Left 6/2/1962



1st Crossing North of Clarendon 6/2/1962



1st Crossing North of Clarendon 6/2/1962 Southbound



MP 50 - Straight Track from Here to Rutland 4.5 Miles 6/2/1962



Bridge 96 Northbound 6/2/1962



Bridge 96 Southbound American Bridge Co. 1903 6/2/1962



Bridge 96 6/2/1962



Small Wooden Bridge South of Alfrechia 6/2/1962 BIG SKY



Bridge 98 Northbound American Bridge Co. 1902 6/2/1962



Site of Former Alfrehia Station on Right Northbound
6/2/1962



Southbound @ Alfrechia Sta. - Station Site on Left Beyond
Crossing 6/2/1962



Bridge 98A Southbound Bethlehem Steel Company 1927



Bridge 98A Northbound Bridge 99 in Distance 6/2/1962



Bridge 98A 6/2/1962



Bridge 99 Northbound American Bridge 1902 6/2/1962



Bridge 99 Southbound 6/2/1962



MP 53 Northbound 6/2/1962 Rutland Yard Limit Sign Distant
Right 6/2/1962