



Poulin Collection -  
Sunderland



Northbound Toward Sunderland - Sunderland Overpass in  
Distance 5/19/1962

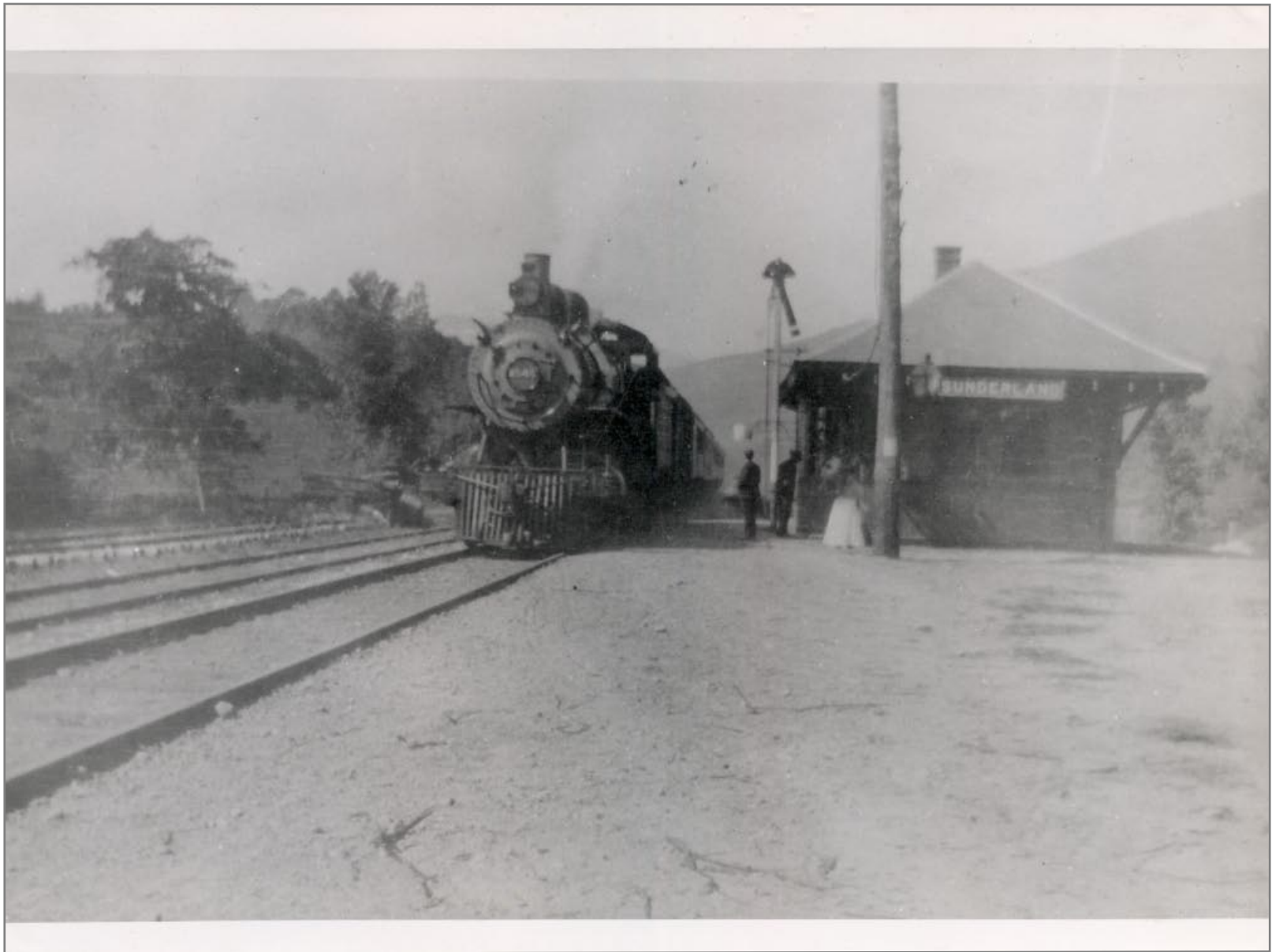


Sunderland Highway Bridge Built 1932 Looking Southbound  
Bridge #62A 5/19/1962



Sunderland Highway Overpass 5/19/1962





Sunderland, VT



















Looking Southbound From Highway Overpass Sunderland  
Station on Right Near Telephone Box 5/19/1962





Northbound From Highway Overpass Toward MP 17 on Right  
5/19/1962







Looking Southbound @ Sunderland 5/19/1962





Milepost 17 Looking Northbound 5/19/1962



Bridge 63





























Bridge #63 Southbound Over Mill Stream Built By American  
Bridge Company 1903 5/19/1962





Bridge #63 Looking Northbound Between MP 17 & 18  
5/14/1962



Northbound @ Bridge 64 5/19/1962





Bridge 64 Southbound 5/19/1962



Bridge 64 MP 18 5/19/1962





Northbound First Crossing North of Sunderland 5/19/962

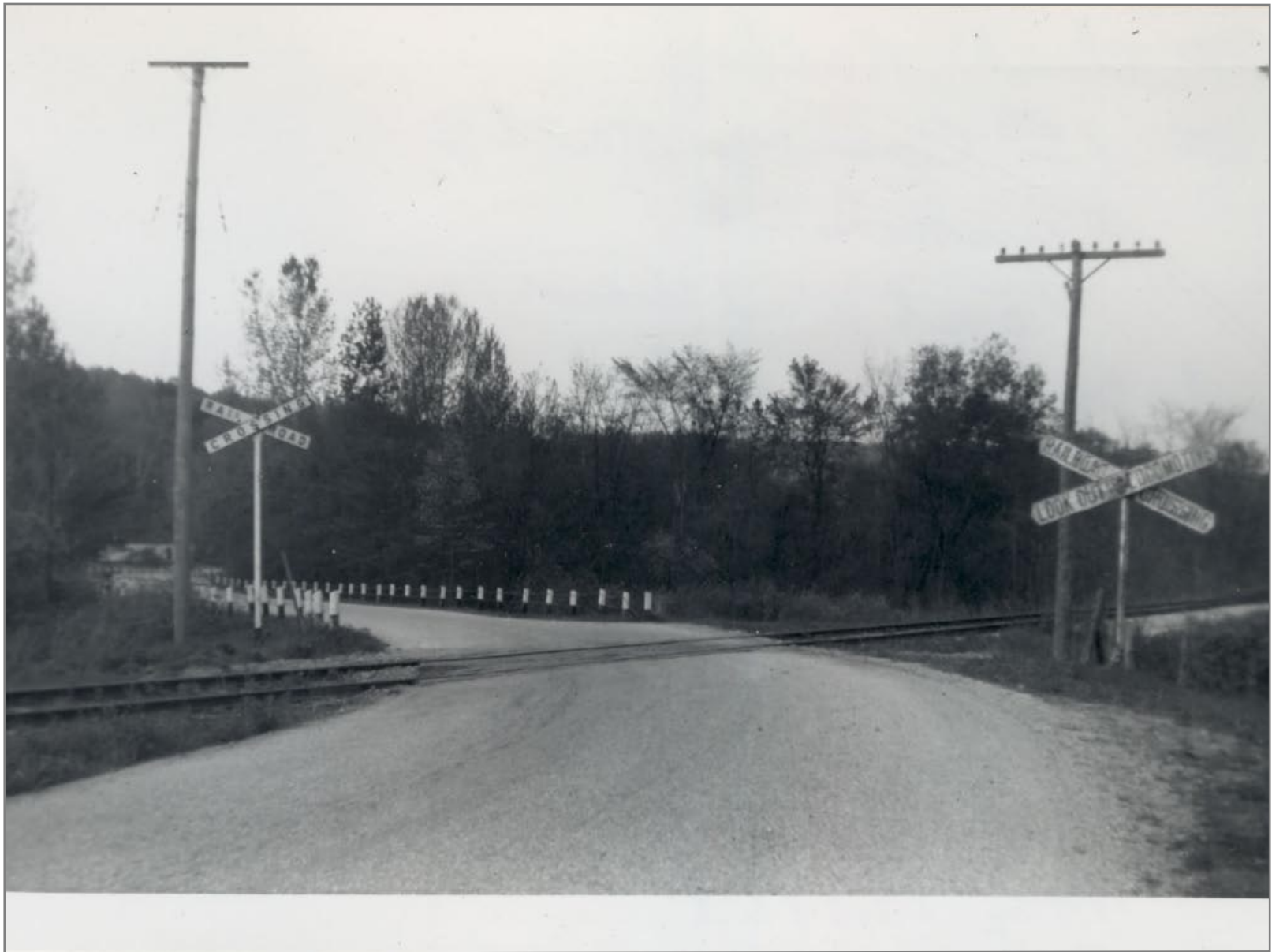


Southbound 1st Crossing North of Sunderland 5/19/1962





Looking West @ 1st Crossing North of Sunderland 5/19/1962



1st Crossing North of Sunderland 5/191/962

















Bridge 64















Southbound Near Sunderland 5/19/1962





Site of Station Just South of Highway Overpass Looking  
Northbound 5/19/1962







Milepost 19 w/ Bridge 65 in Background 5/20/1962



Southbound MP 19 in distance





MP 20



Northbound 5/26/1962 Note Rail Storage Rack on Right





Northbound Between MP 19 & 20 5/20/1962



Bridge #65 North of 2nd Crossing From Sunderland 5/20/1962





Bridge 65 Southbound 5/20/1962 Built by American Bridge Co.  
in 1903



Bridge 65 5/20/9162





Southbound w/ Bridge #65 in Background 5/20/1962



Northbound 5/20/1962





Southbound 5/20/1962



Northbound Between MP 19 & 20 5/20/1962





3rd Road Crossing North of Sunderland Johnson Distribution  
on Siding in Background 5/20/1962

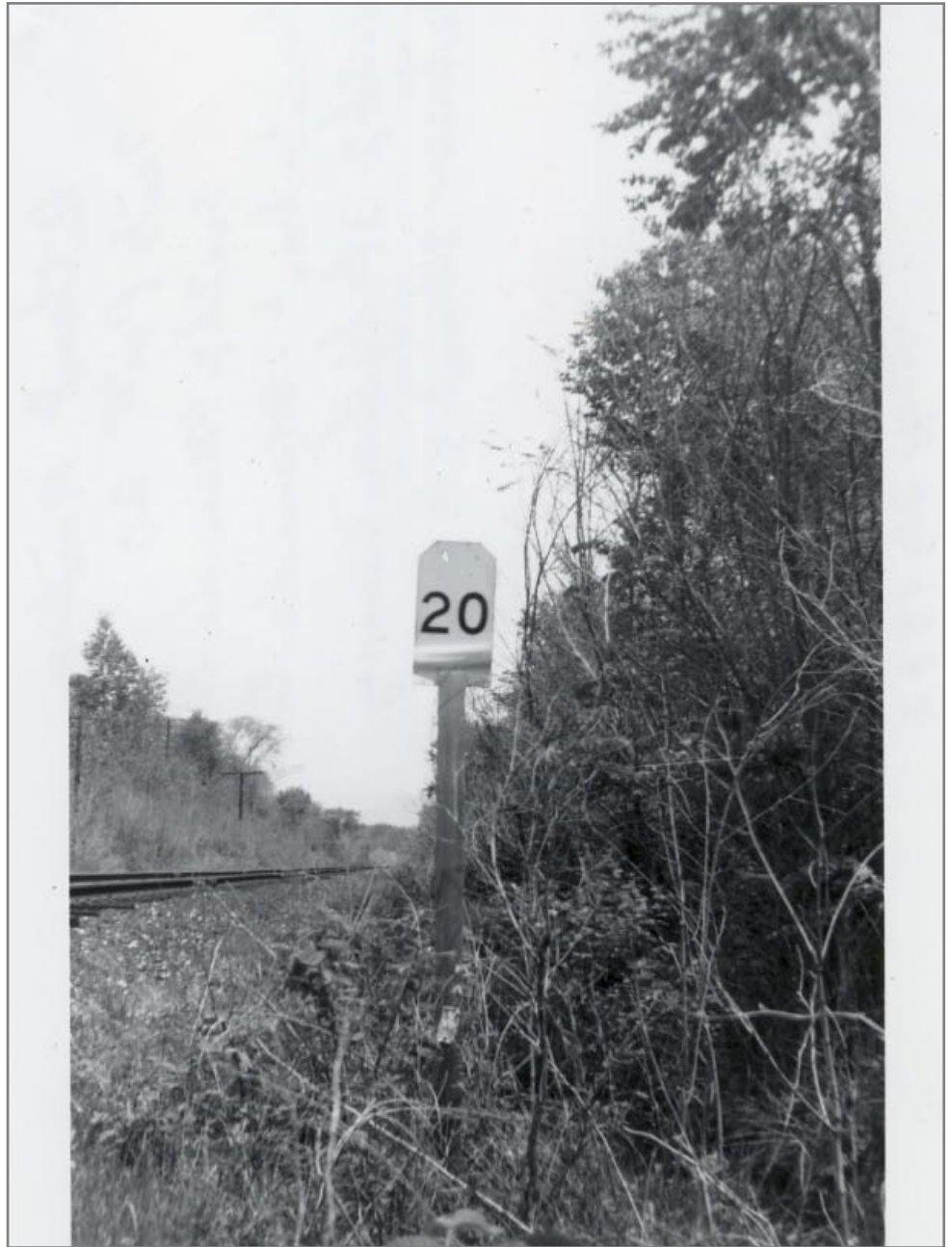


3rd Crossing North of Sunderland 5/20/1962





3rd Crossing North of Sunderland 5/20/1962



MP #20





Southbound Near MP #20 5/20/1962



Northbound Near MP 21 5/20/1962





Motor Car Set Out Southbound Near MP 21 5/20/1962

















































































Bridge 67 Northbound 5/20/1962





Bridge 67 Southbound 5/20/1962



Bridge 67 Looking West 5/20/1962



























Bridge 69 Southward









Bridge 69 5/20/1962



Bridge 69 Looking West 5/20/1962





Bridge 69 American Bridge Company 1903 - 5/20/1962



Northbound 5/20/1962





Northbound toward Manchester 5/20/1962



Looking East @ Crossing 5/20/1962





Southbound 5/20/1962



Southbound 5/20/1962





Northbound by MP 22 5/20/1962



Northbound MP #22 on Right 5/20/1962





Southbound 5/20/1962



Northbound 5/19/1962





Southbound 5/20/1962