

Poulin Collection -
Rutland



Northbound Rutalnd Yard Limit about 20 feet north of MP 51



2nd crossing north of No. Clarendon - MP 51 on right



Southbound into No. Clarendon



Southbound



Northbound Rutland Fire Clay on left



Rutland Fire Clay on right heading southbound



Northbound Switch into Rutland Fire Clay



























Southbound to Bellow's Falls across Route 7



Looking North across Route 7

























Rutland



Southbound @ Howe Scale

















Scale House Rutland - Howe Scale in rear



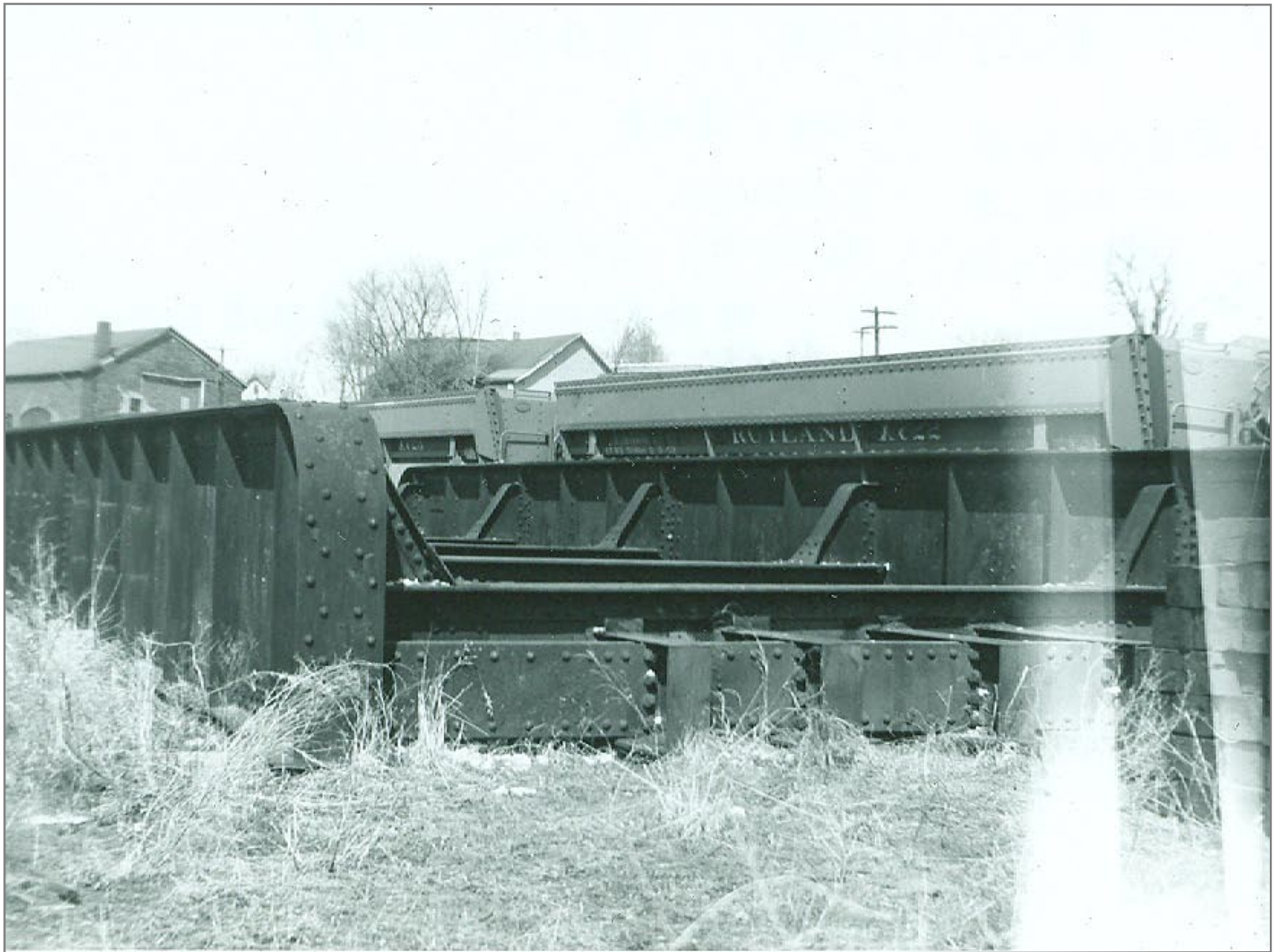
Tool House in Rutland yard



Rutland Section House







Bridge #203 - American bridge 1903



Southbound from Stong Ave. bridge









Rutland

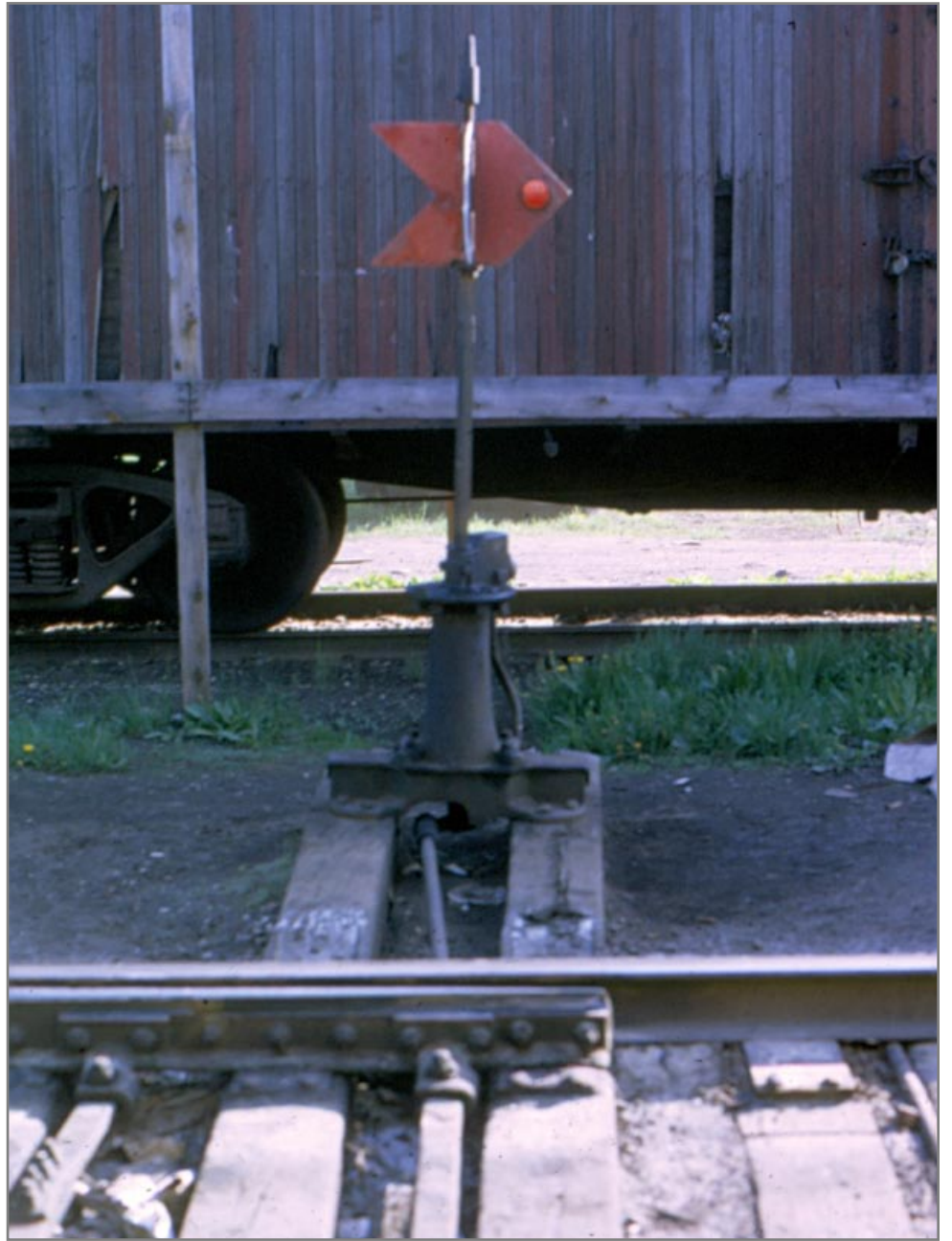






















Southbound in Rutland Yard



Photo taken in 1960

MAR • 62





South from Strong's Ave. Bridge



Southbound



Rutland Southbound







Rutland Freight House



Rutland



Yard office Rutland









Rutland Freight House - Coach Shed on left



Rutland Freight House



Northbound Rutland













Rutland Yard Limit Sign



West view - Crossing of B&R Division Rutland Fairground in background





Northbound - Howe Scale in back



Northbound Switch into Howe Scale on right



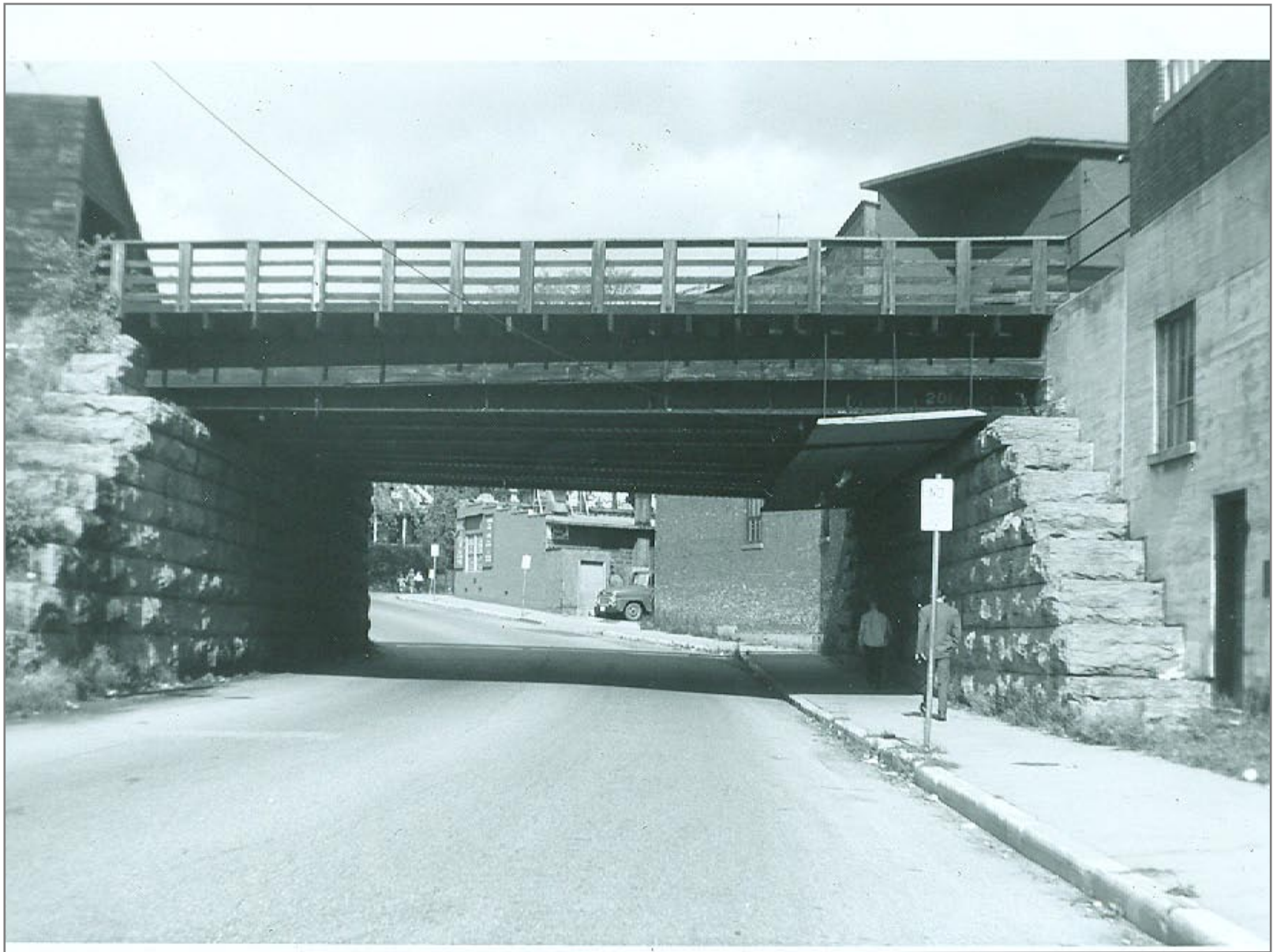
Northbound at North end of Rutland yard



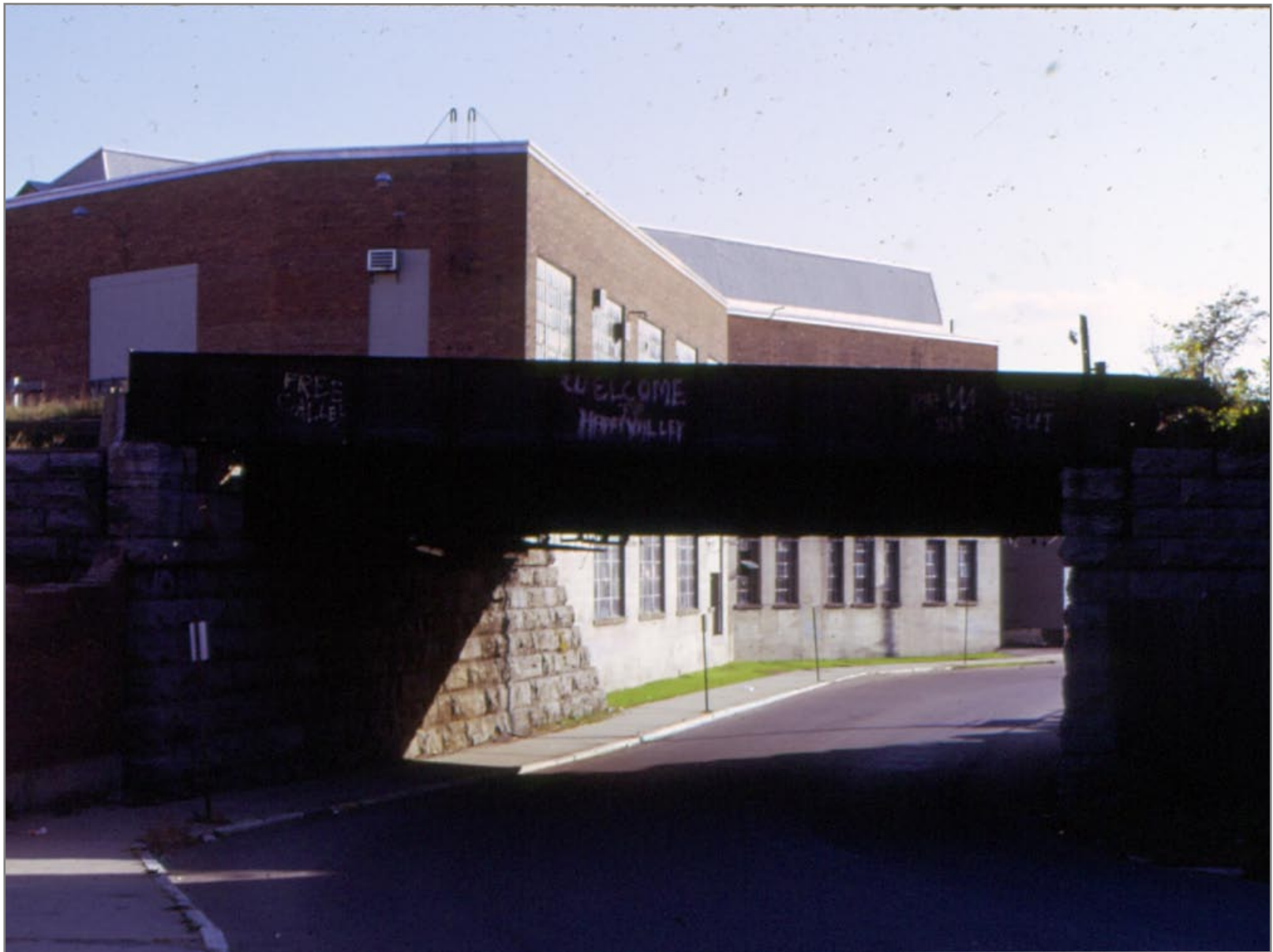
North end of Rutland Yard looking south



Northbound at North end of Rutland yard Bridge 210 in foreground



Bridge 201













West Street Crossing looking Southbound



West Street Crossing Westbound



Northbound









Westview crossing Forest Street



Southbound into Rutland Yard approaching West Street crossing











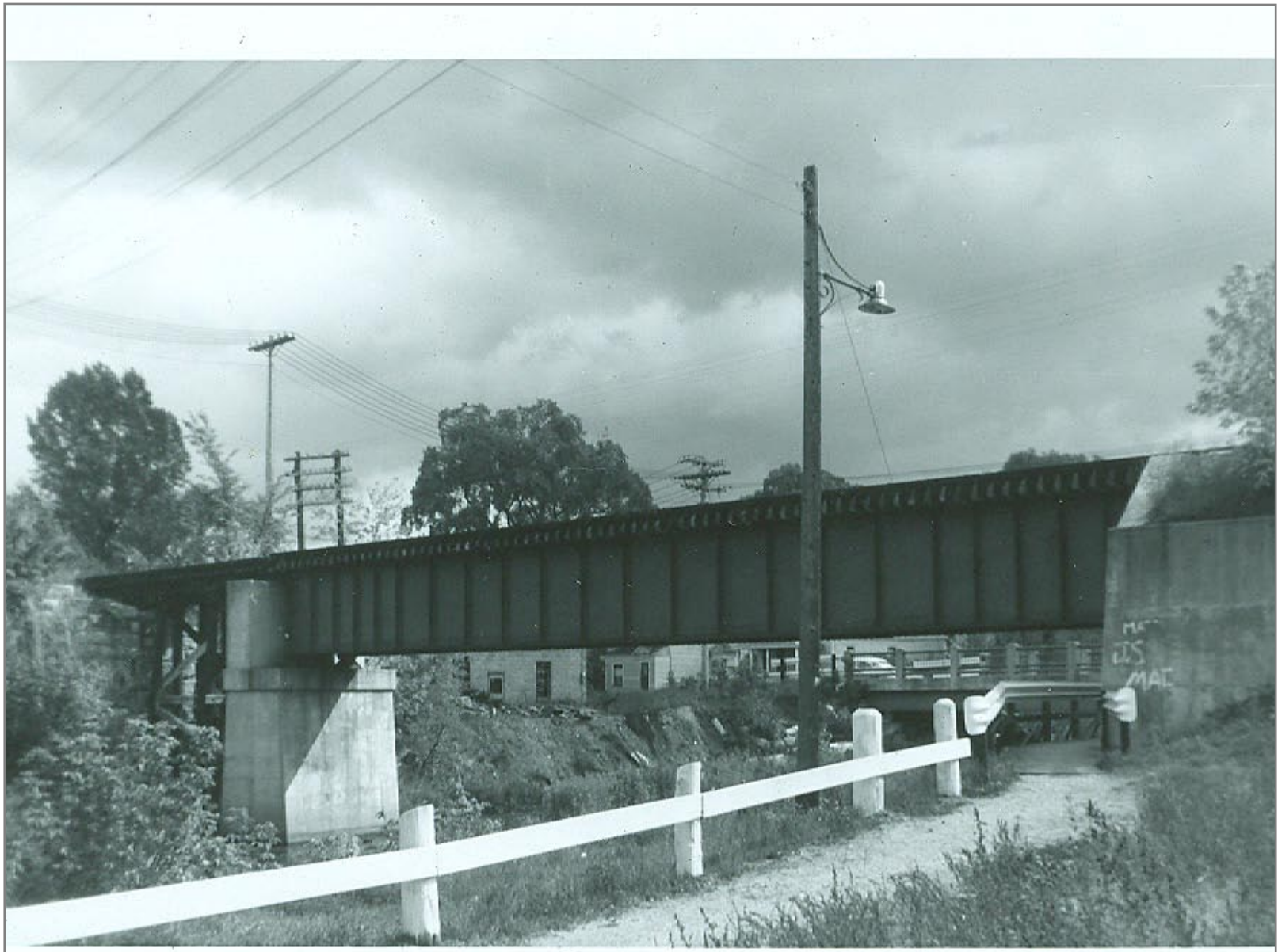












Bridge over Otter Creek



Rutland Bridge over Otter creek

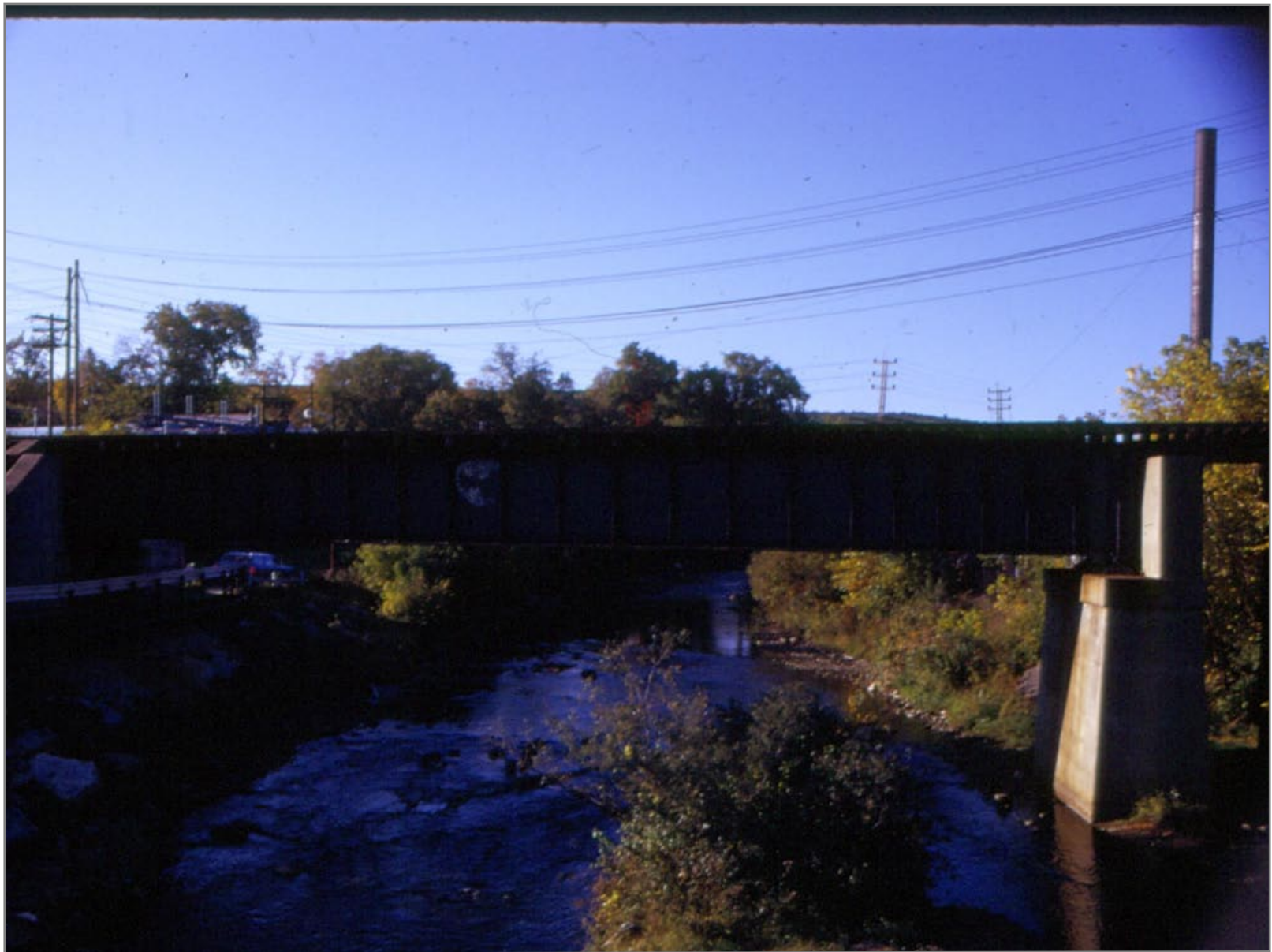












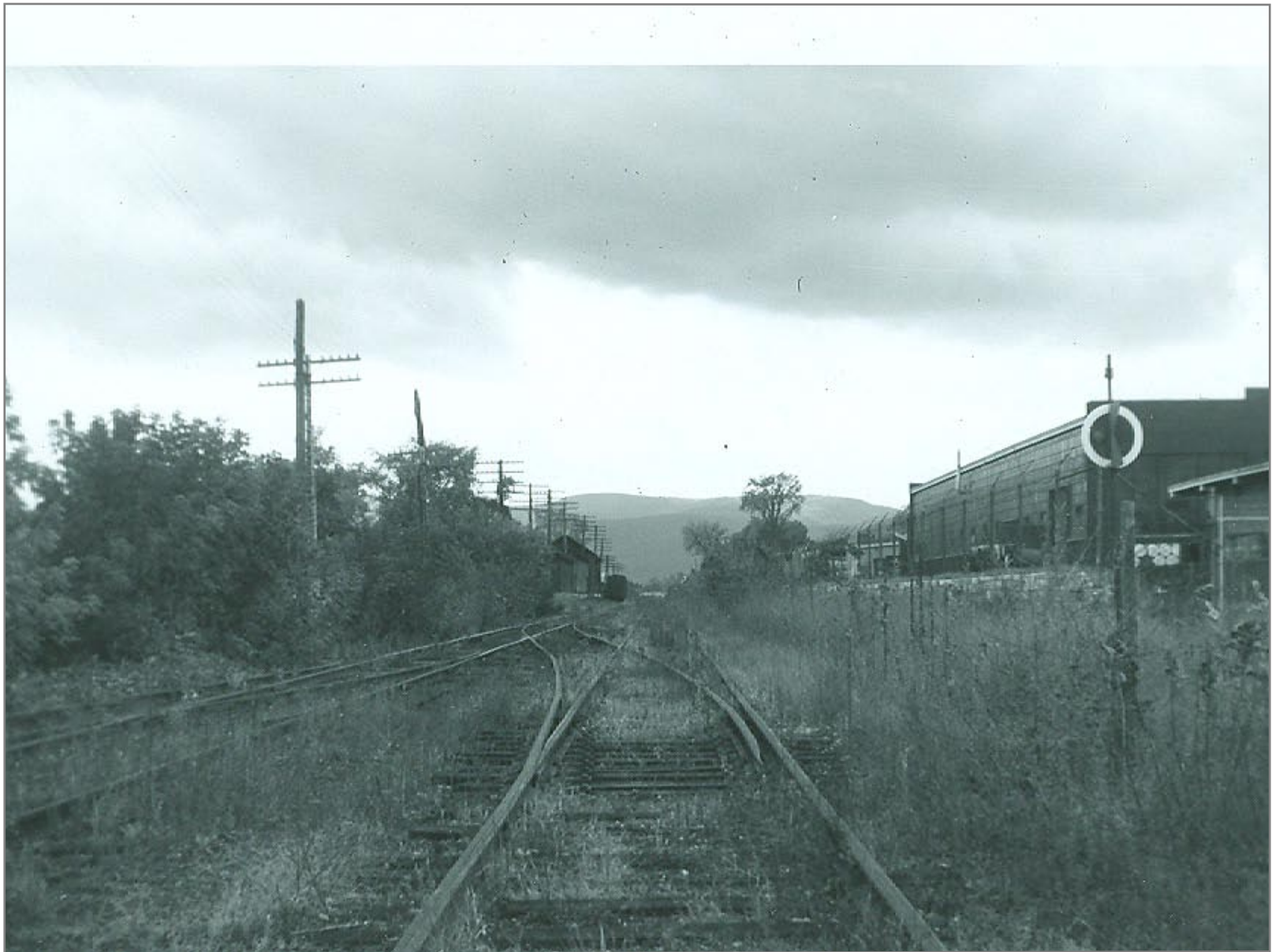




Northbound Bridge over Otter Creek



Southbound Bridge over otter Creek ahead



Northbound to center Rutland









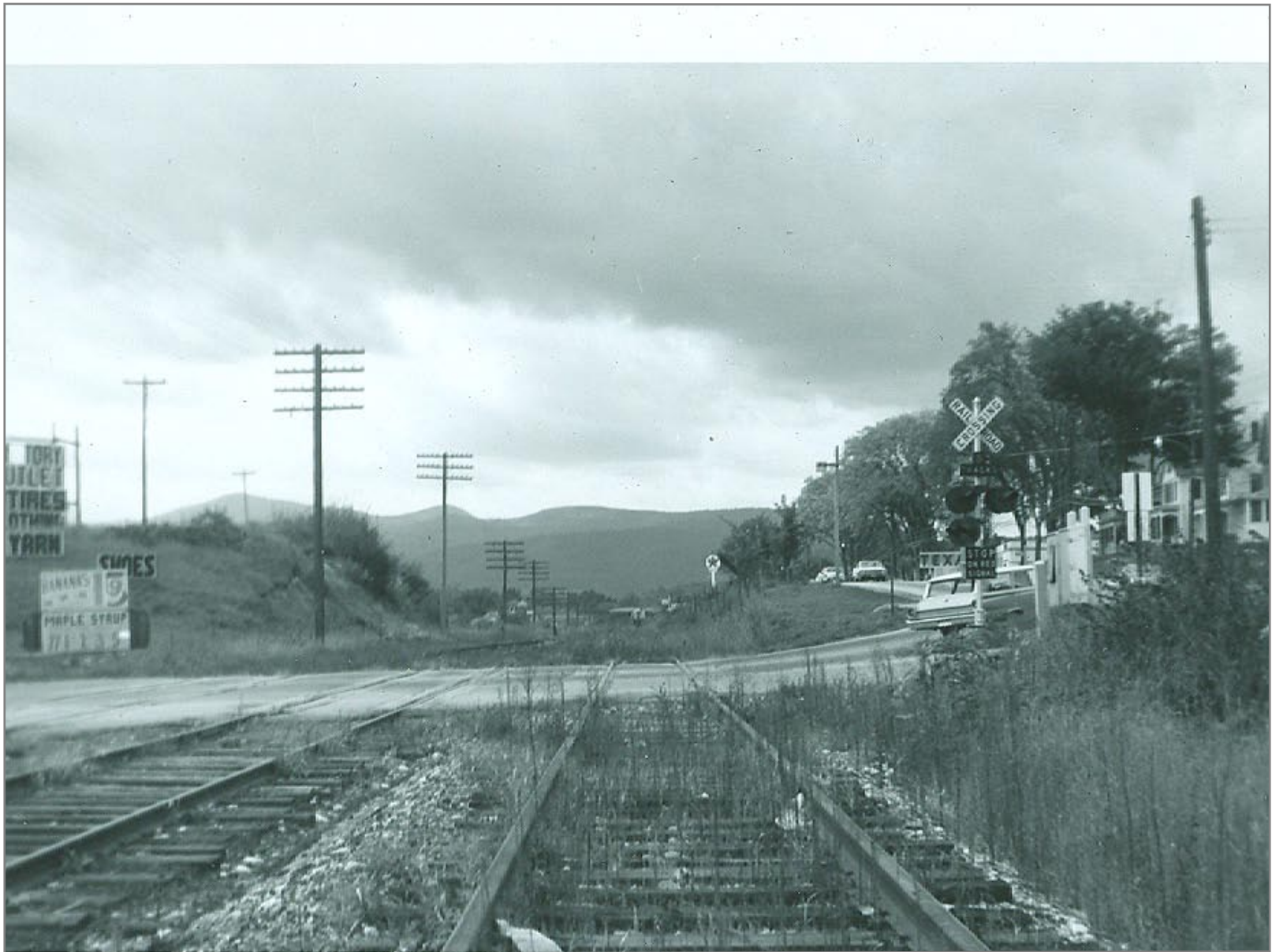
Northbound into Rutland @ Route 7



Northbound Crossing Allen Street



West Street Crossing- Southbound -D&H Track on right



Northbound over West Street











Route 4 Ahead Looking North



Looking Southeast from Route 4



Southbound north end of Rutland





Southbound in Center Rutland



Northbound toward Center Rutland



Crossing at Vermont marble Company looking eastward - D&H track in foreground- US 4 in distance



Northbound near Center Rutland



Looking west toward Vt Marble Plant on right - Ctr. Rutland to right































Rutland 1932



Camp Car in Rutland Yard



Rutland Yard



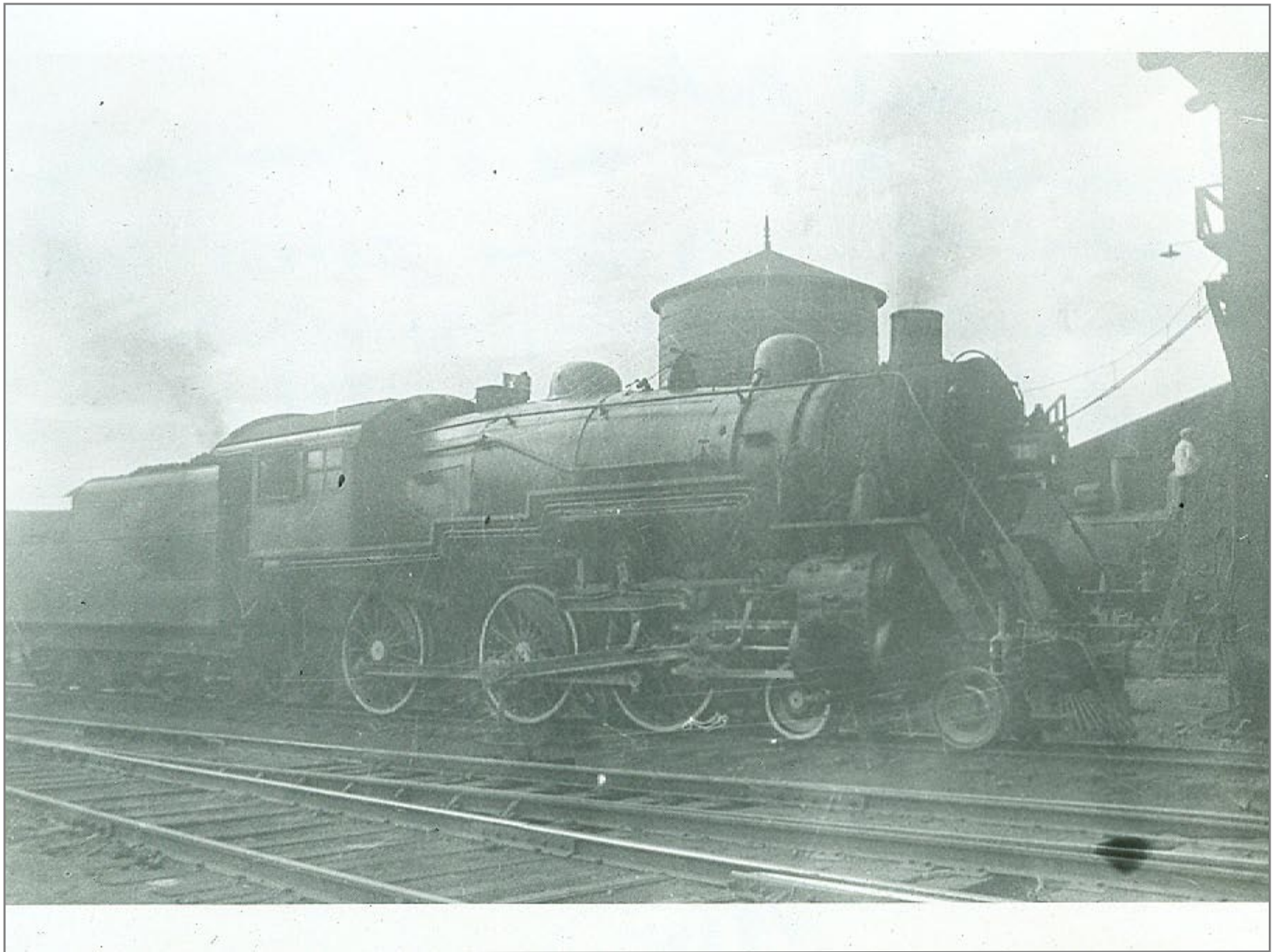
Rutland Yard



Rutland

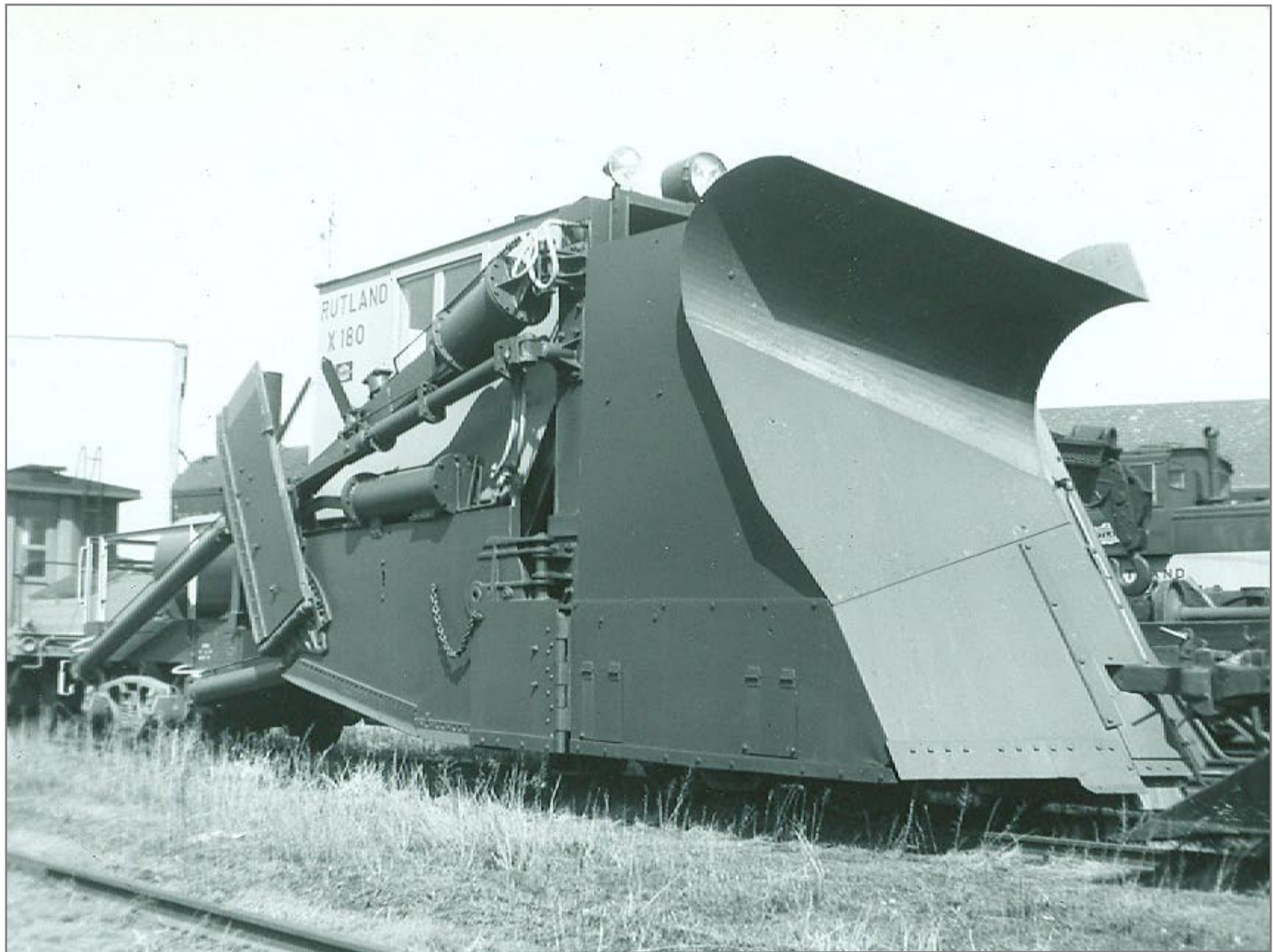


Rutland





MAR • 62





Rutland



Rutland yard



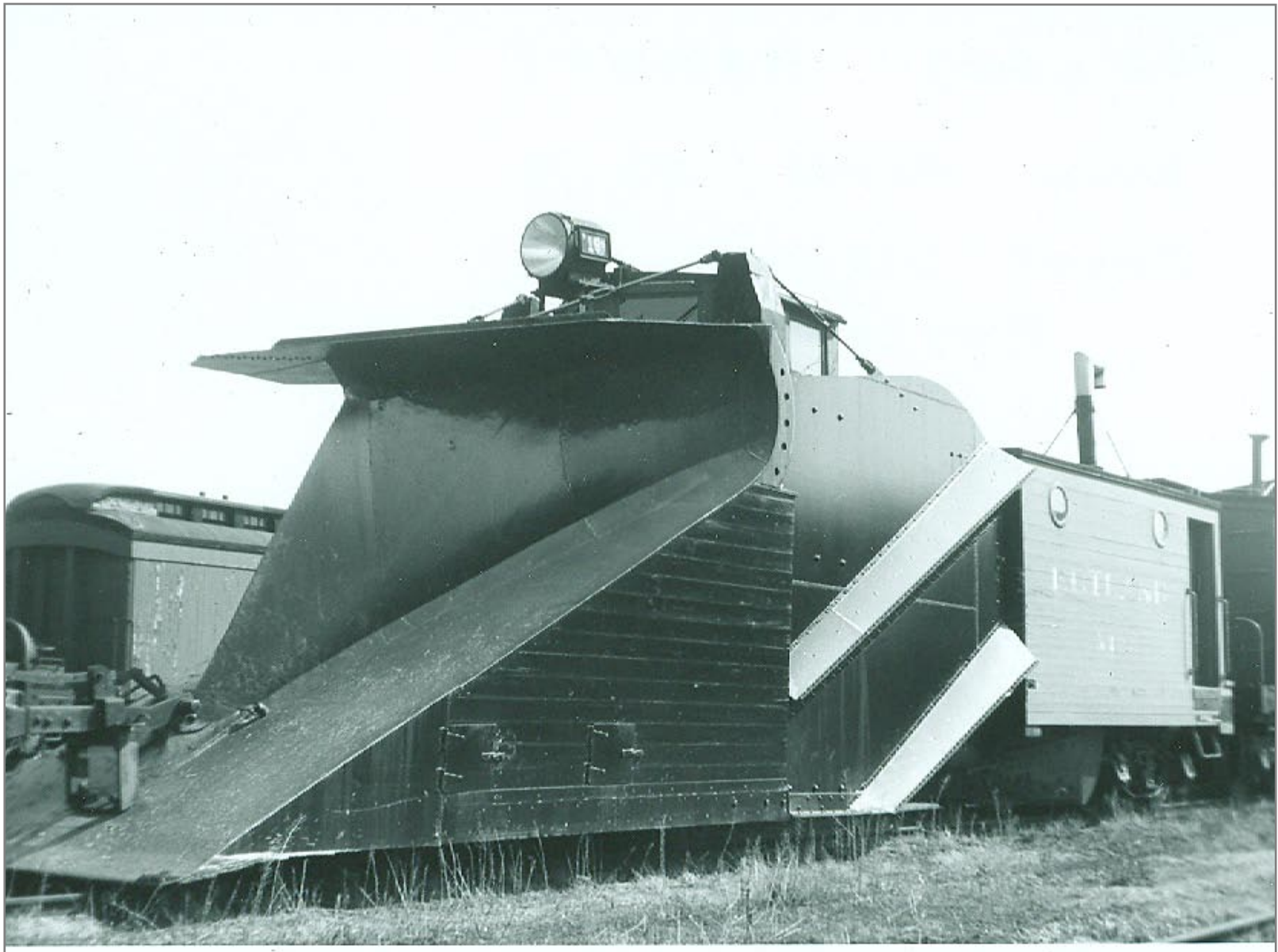
Rutland Yard



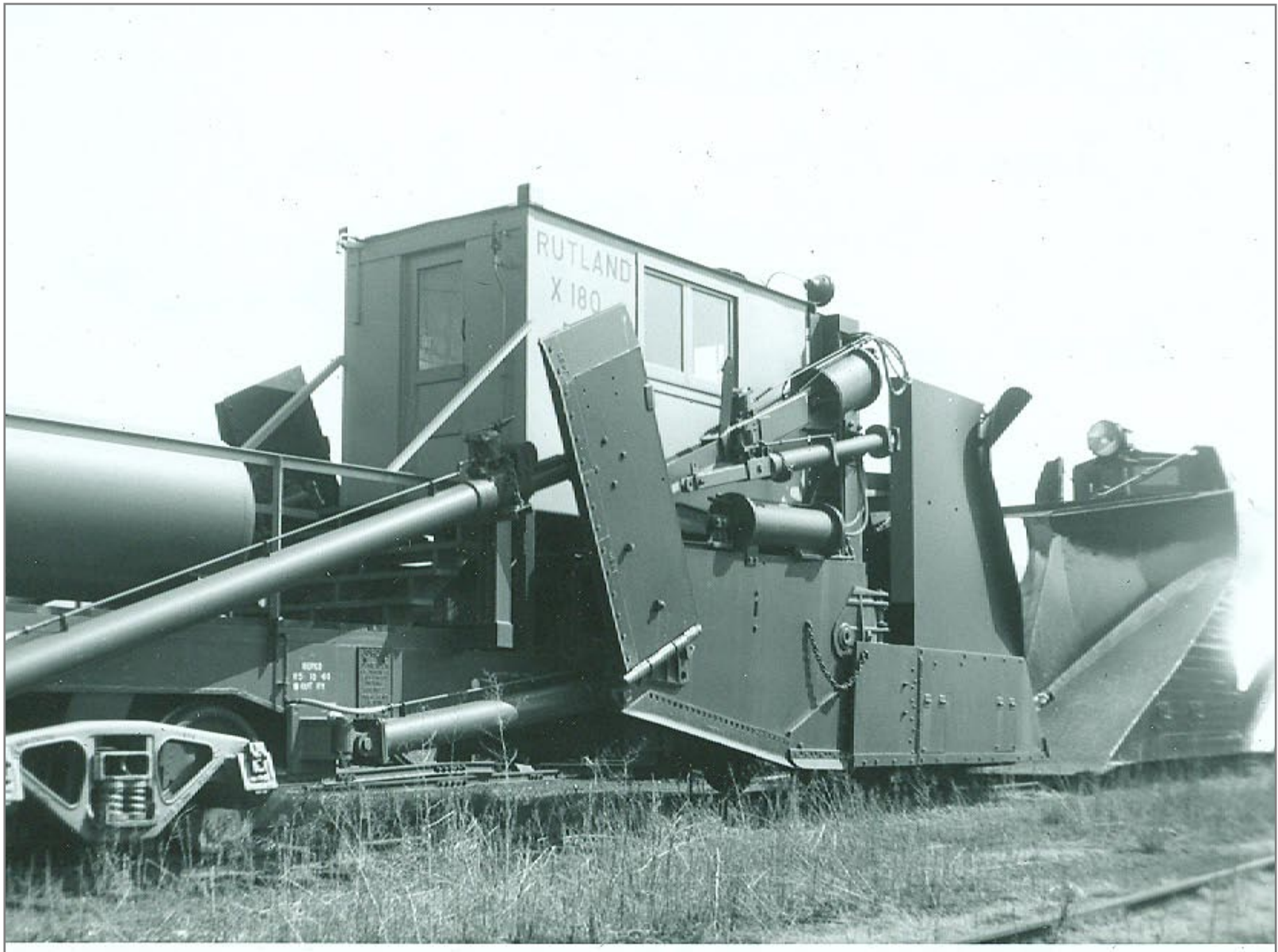
Rutland



Rutland yard



Rutland yard



Rutland yard



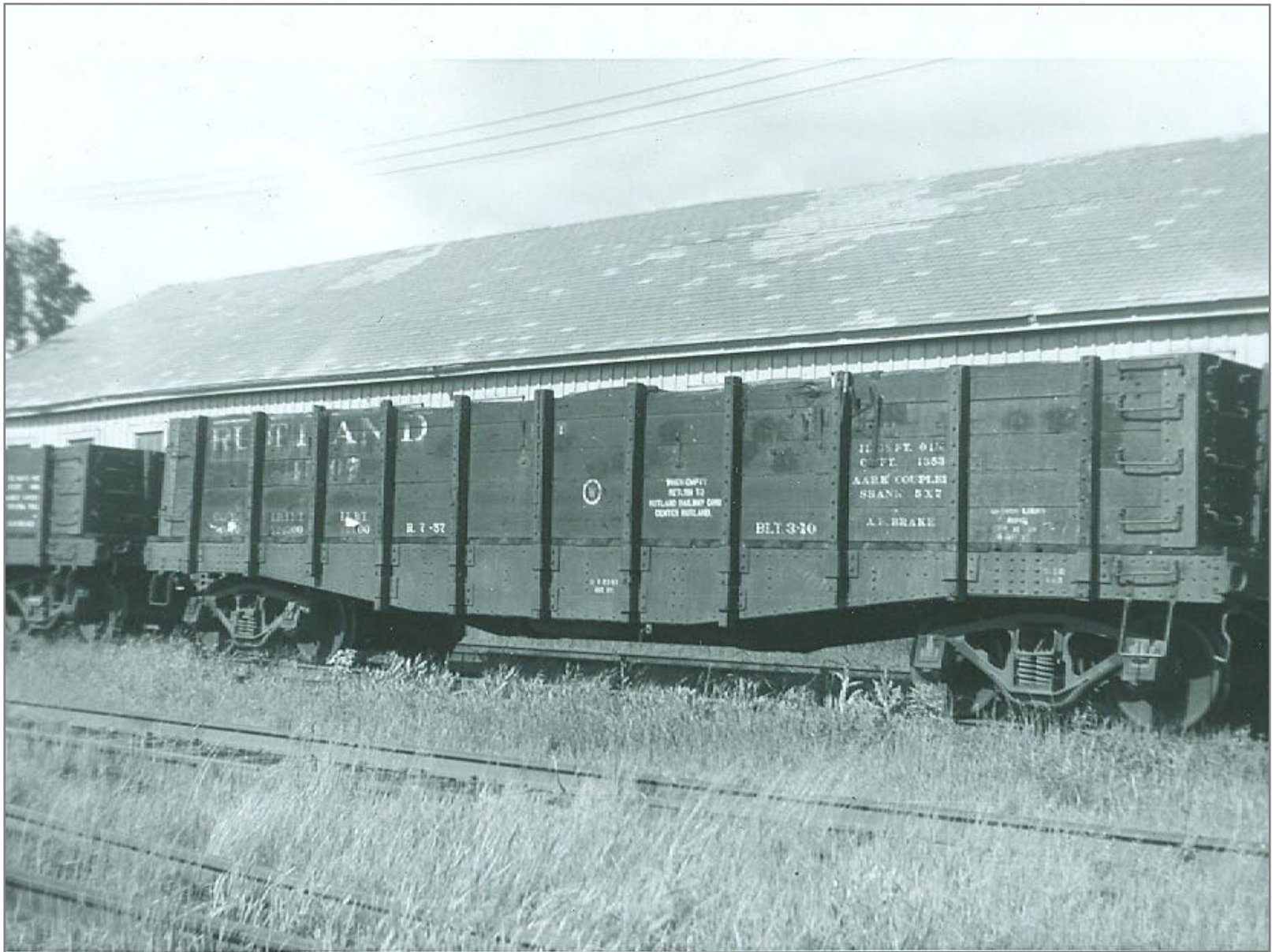
Behind freight House Rutland



Behind Freight House Rutland



Behind Freight House



Rutland Yard



Rutland



Rutland



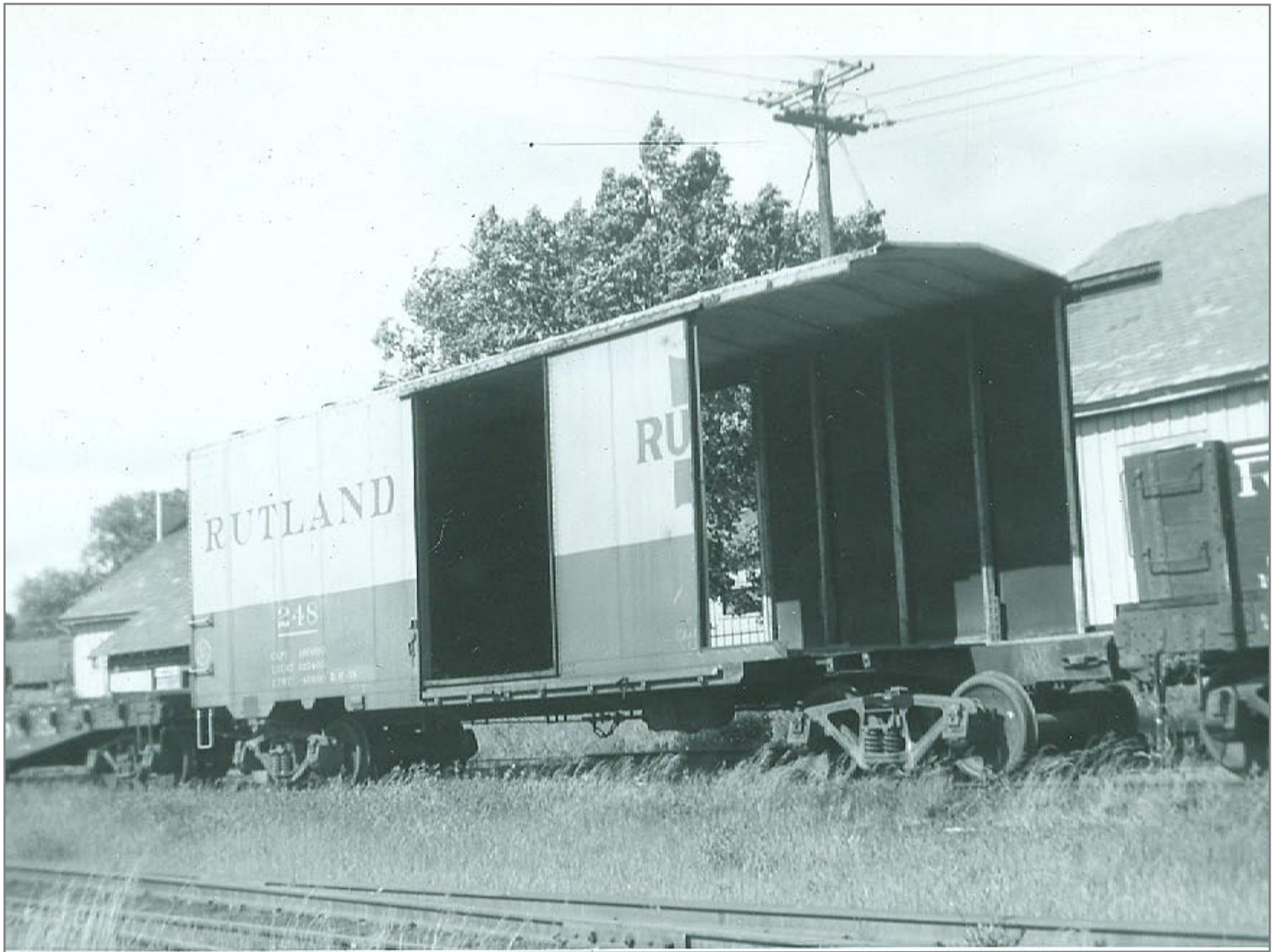
Rutland



Rutland



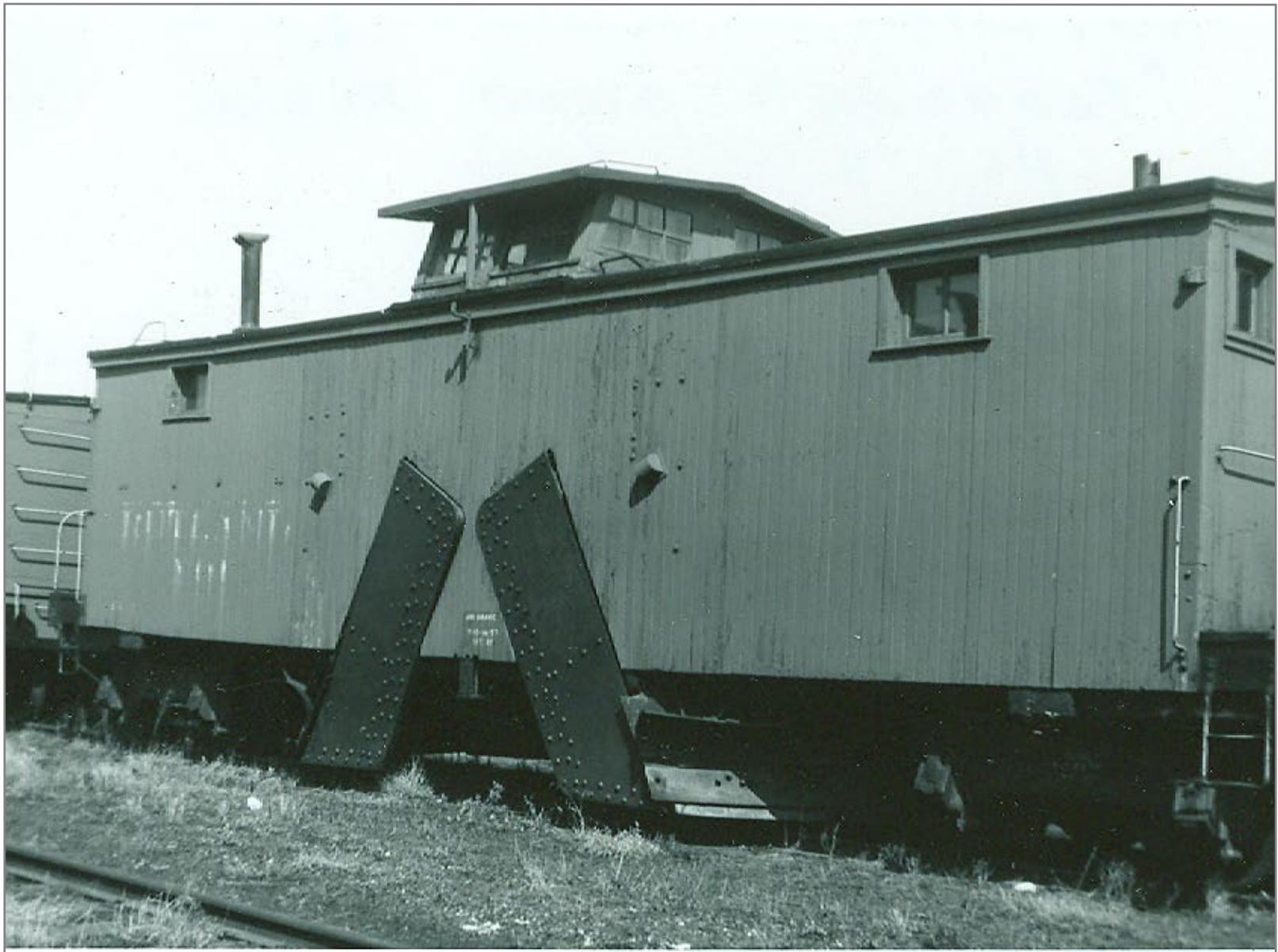
Rutland



Rutland



Rutland



Rutland