



Old Chatham Station Looking  
Northbound 5/1953



Old Chatham Station 5/1953



Old Chatham Station looking  
Northbound 6/24/1962



Old Chatham 6/24/1962



Old Chatham Looking Southbound  
6/24/1962





Brainard Station Looking North 9/1950



Brainard 9/1950



Brainard 3/26/1961





ROW crossing Route 20 Between  
Brainard & West Lebanon 3/26/1961



New Lebanon Station 5/1953



New Lebanon 5/1953



Stephentown 1953



Stephentown 9/1953





MAR • 61

Stephentown 3/1961



Wooden Coaches @ Stephentown  
1950



Work Train @ Stephentown 1950



Stephentown 1950



Between Stephentown & Cherry Plain





South Berlin Station - The name of this station was changed to Cherry Plain because of confusion on train orders with Berlin Station



Cherry Plain 1950



Cherry Plain looking Northbound  
5/1953



Cherry Plain 1950





Cherry Plain - LMB 3/1961





Cherry Plain looking Northbound  
5/1953



Center Berlin Station Site on left  
looking Southbound



Berlin Station 4/1953



Berlin 1953





Berlin 3/1953





Berlin 1953



Berlin 1953



Berlin looking Southbound 4/1961



Work Train @ Berlin Siding 1950





Petersburgh NY 1951





Highway Bridge over Rutland RR  
looking North from Petersburg  
Station site 4/2/1961



Petersburgh 1951



Petersburgh 1950



North Petersburg - Bridge over  
Hoosick River in Background 1953





Hoosick River Bridge 4/1953





Abutments for Rutland RR Bridge over  
Hoosick River 5/21/1964



North Abutment of Bridge over  
Hoosick 5/21/1964



Center Pier of Bridge over Hoosick  
River looking North in Town of  
Petersburgh 11/12/1961





Petersburgh Junction - B & M Freight  
about to cross over Rutland Track



Petersburgh Junction looking North  
1953





Petersburgh Junction



Petersburgh Junction looking North  
1953



Petersburgh Junction 1951



Petersburgh Junction 1951





Rutland ROW Between VT/NY State  
Line and Route 7 1964



Rutland ROW looking Southbound  
5/21/1964



Abandoned Road Bed Between  
Petersburgh JCT and Bennington ?  
1964





Anthony Siding before Bennington  
1951





VT/NY Boundary Line Monument on  
ROW 1964



VT/NY Boundary Monument on ROW  
1964





Rutland ROW Crossing Main Street in  
Bennington 8/1960



Looking South from Bennington  
Station Platform @ Beginning of  
Chatham Branch 9/19/1961





Chatham Branch Battery Boxes for  
Crossing Signals on Route 7 near  
Bennington 8/1960

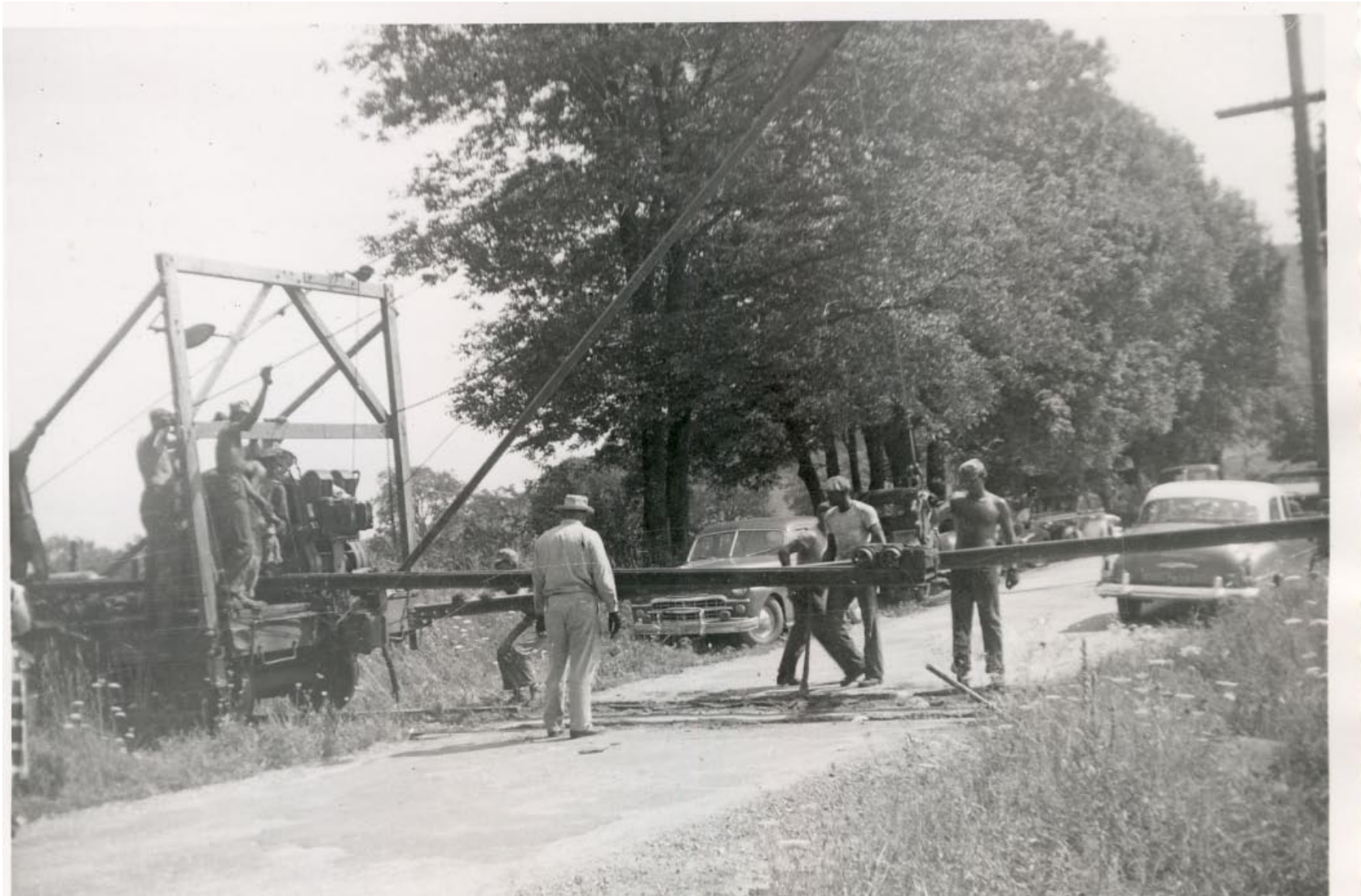


Wrecking Crew on Chatham Branch





Wrecking Crew on Chatham



Wrecking Crew on Chatham





Wrecking Crew Engine



Wreck Train



Wreck Crew on Chatham 1953





Wreck Crew on Chatham 1953





Wreck Crew on Chatham 1953



Wreck Crew on Chatham 1953



Wreck Crew on Chatham 1953



Wreck Crew on Chatham 1953





Wreck Train on Chatham 1953



Wreck Crew on Chatham 1953



End of the Line