



Poulin Collection-
North Bennington











Milepost 58 Miles to Chatham



Looking South from North Bennington - Bridge is over outlet of Lake Paran, Coal Dealer on Left after Bridge 4/15/1962

















Looking South at beginning of North Bennington Wye
4/15/1962



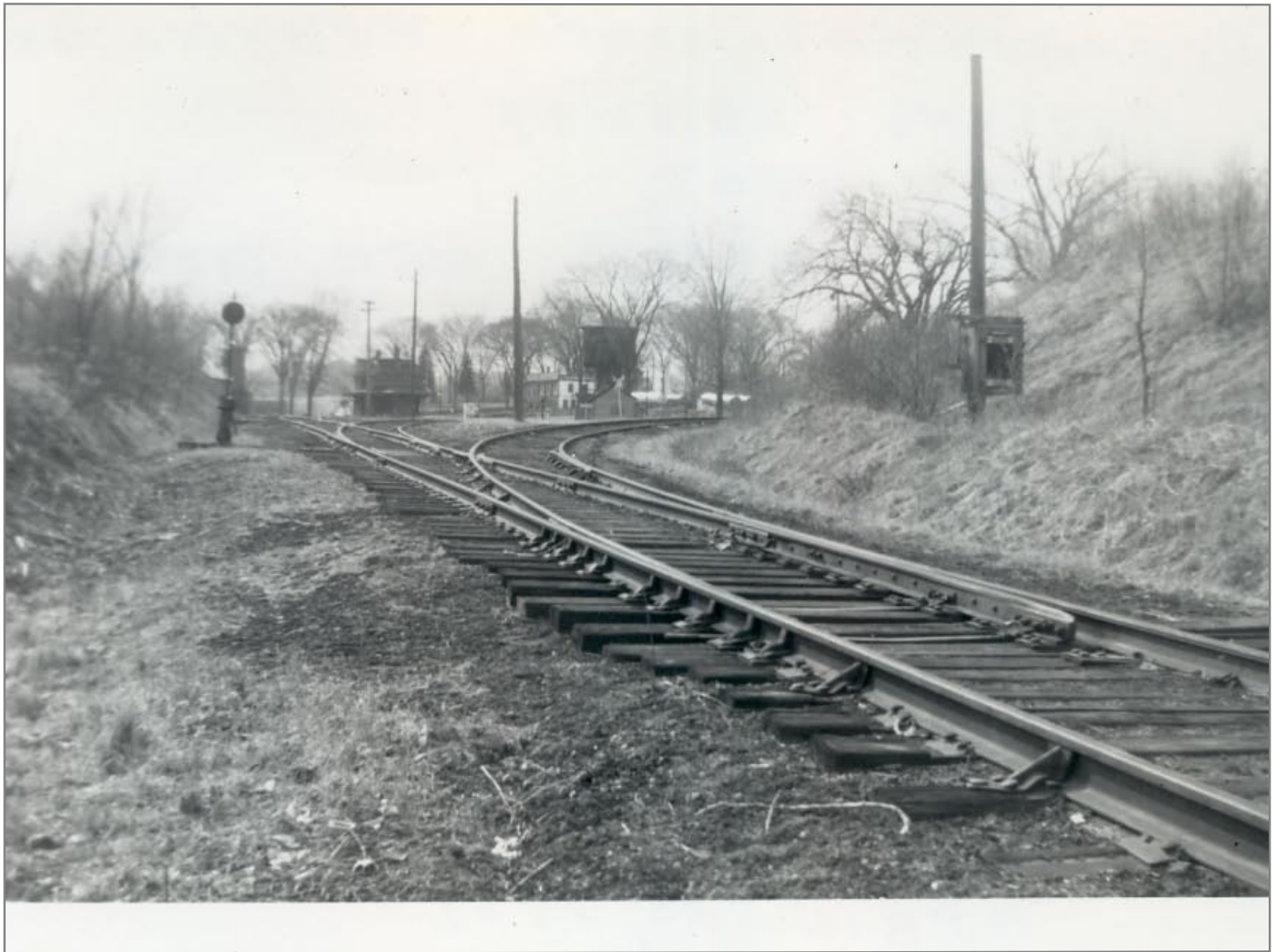


Inside Wye Looking Toward Bennington - Track to Rutland on
Left 4/21/1962



Leg of Wye Heading to Rutland 4/21/1962





Looking North into North Bennington Yard - Station in
Distance 4/15/1962



North Bennington



Loco #74 North Bennington









North Bennington



Looking North in No. Bennington toward Rutland, Ice House
Inside Wye on Left 4/20/1962



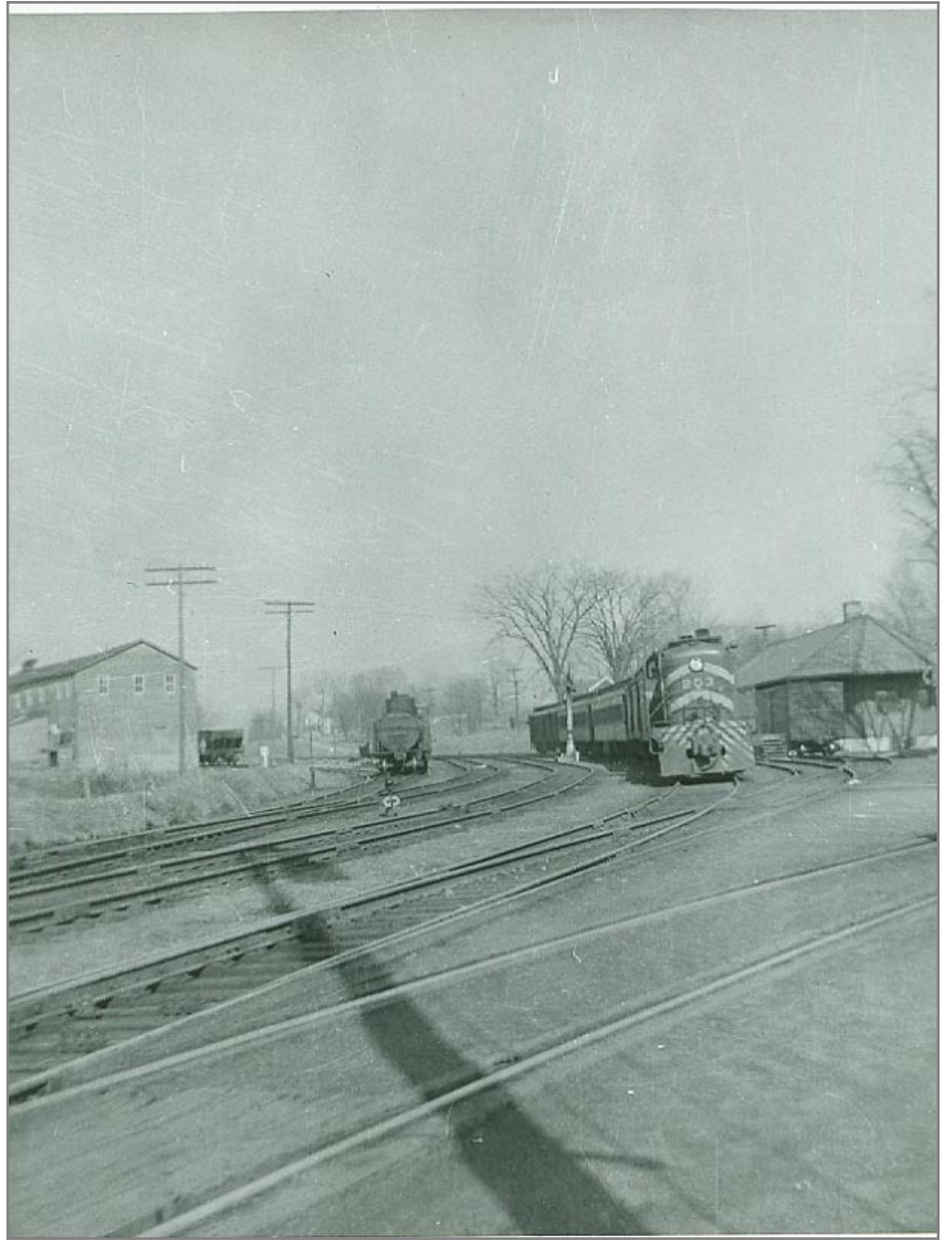
No. Bennington 10/1960



Loco #74 North Bennington



North Bennington

















Ice House inside Wye Freight House to Left 4/8/1962













North bennington Freight House with Ice House in Right
Foreground 7/1/1962



North Bennington Freight House 7/1/1962



North Bennington Freight House 3/10/1962



No. Bennington Freight House 3/10/1962



North Bennington



North Bennington looking at Ice House, Freight House, and
Station 10/11/1964





North Bennington



Mile Post 2 Looking East 2 Miles From NY/VT Line on White
Creek Line 7/1/1962



No. Bennington, Whitman Feed - Freight House Behind
Photographer 4/21/1962



North Bennington Coal Shed & Warehouse in Background







Street Side North Bennington Station 3/10/1962



North Bennington Station 3/10/1962



No. Bennington 3/10/1962



No. Bennington 4/15/1962



North Bennington 3/10/1962



No. Bennington Station 10/22/1961



No. Bennington Station 5/20/1961



No. Bennington Station 5/6/1961



No. Bennington Station looking West to White Creek 10/1960



No. Bennington Station looking North toward Rutland October
1960





NORTH BENNINGTON

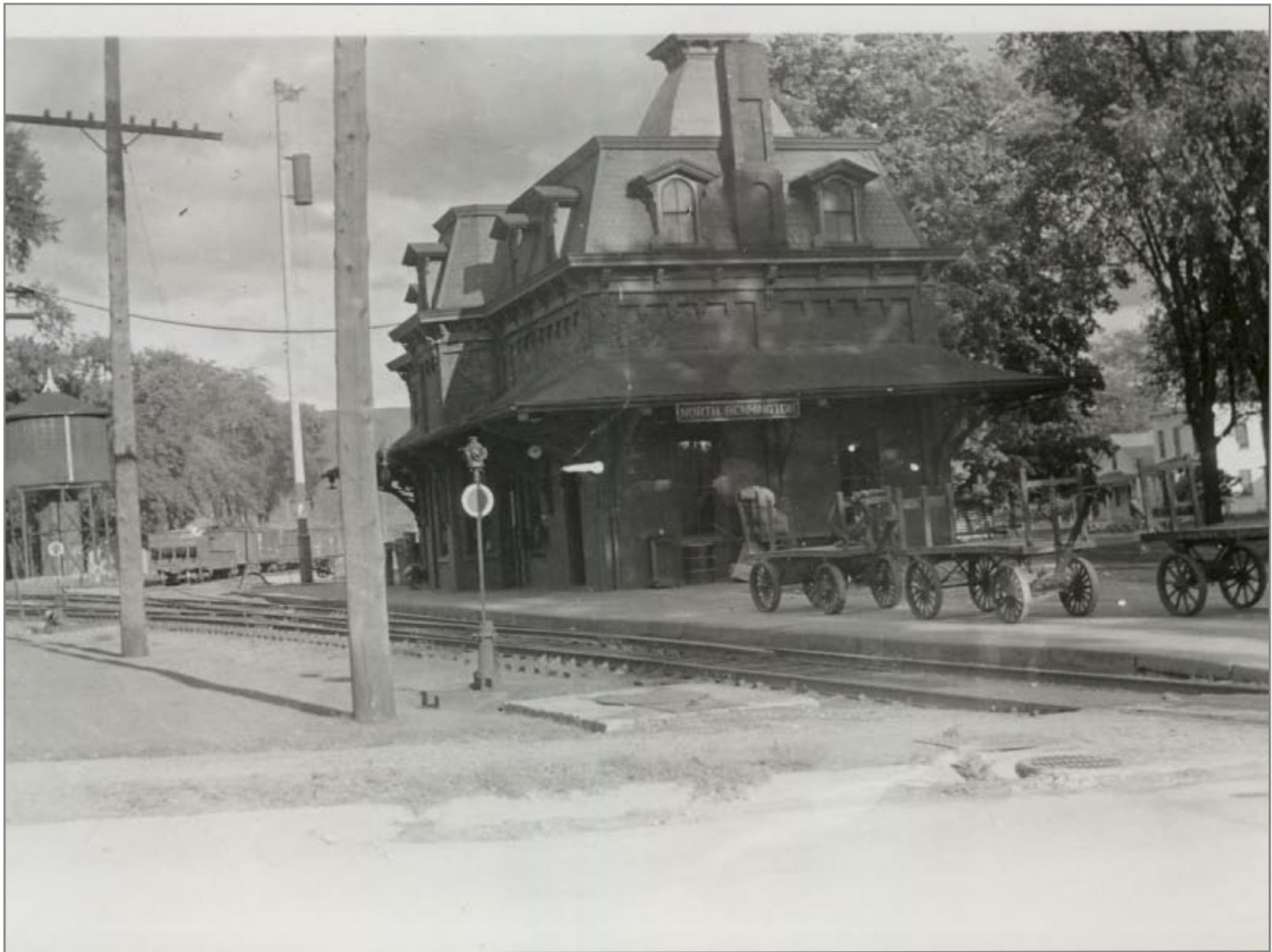


Looking west from Station Platform toward White Creek NY
10/11/1964





North Bennington



North Bennington 1939



north bennington



Steel Baggage Car @ North Bennington



Locomotive 90 @ North Bennington



North Bennington Water Tank 1962



North Bennington 10/11/1964



North Bennington 10/22/1961



North Bennington



Loco #74 North Bennington



North Bennington



Loco #53 North Bennington 1952



North Bennington 1952



North Bennington 1952



Northbound Green Mountain Flyer @ No. Bennington 1951



Loco #74 No. Bennington 1951



B & M Pacific #3700 @ North Bennington 1951 or 1952



North Bennington 10/11/1964













North Bennington Section Houses 4/8/1962



Looking @ North Bennington Station from West - Note Track Scales on left 10/11/1964



north bennington scale house



Scale House North Bennington 3/22/1962



Track Scales in North Bennington 10/11/1964



Looking West toward White Creek - No. Bennington Station
Behind Photographer 3/10/1962





White Creek Road Crossing Looking West 4/8/1962



West of White Creek Road looking East Toward No. Bennington
Old Trolley Barn on Right 4/8/1962



Looking West toward White Creek from North Bennington -
Bennington & Hoosac Valley RR Car Barn on Left 3/22/1962



Looking West - Scale House behind Photographer 3/22/1962



Looking East toward No. Bennington 4/8/1962



Looking West At Shaftsbury/Bennington Town Line toward
White Creek 3/22/1962



Looking South From Fill Toward Route 67 4/8/1962



Looking North Toward East End of Fill 4/15/1962



Looking North From Route 67 at High Fill Over Cold Spring
Creek 4/15/1962



Looking North toward West End of Fill 4/15/1962



Looking South at Rutland Embankment over Cold Spring Creek
4/20/1962



Clod Spring Fill West End of Fill Looking North 4/21/1962



Cold Spring Fill 4/21/1962



Looking East @ East End of Cold Spring Fill 4/21/1962



Looking East 4/8/1962



Looking West at First Farm Crossing East of State Line 4/8/1962



Looking West toward White Creek at site of Old Route 67
Crossing 4/8/1962



Looking West to White Creek 4/8/1962



Looking East toward No. Bennington 4/8/1962



Looking East on Embankment Fill 4/8/1962



Looking East Whistle Post in Left Distance 4/8/1962



Old Siding Started For White Creek Station on Right - Tool
Shed in Background Looking West 4/15/1962



State Line Crossing Looking North B&M on Right - Rutland on
Left 4/8/1962



State Line Crossing - B & M Former Siding on Left 4/8/1962



Looking West - Beginning of Siding For White Creek Station to
Right 4/15/1962



State Line Crossing 4/8/1962



Tool Shanty 4/8/1962



State Line Crossing Looking East to No. Bennington - White
Creek Station on Right This Side of Road 4/15/1962



Site of White Creek Station Looking West Into NY - Note Siding
on Lower Left 4/20/1962



Foundation of White Creek Station @ Sign Board 4/15/1962



State Line - White Creek Station Stood on Left of Tracks Just Beyond Crossing 4/20/1962



State Line 4/15/1962



Looking East To Vermont - Old Spur on Right Heading Behind
White Creek Station 4/15/1962



Crossing @ State Line 10/1960



Looking South into North Bennington 4/20/1962 Ice House on
Left, Freight House Background



Looking North from No. Bennington toward Rutland
10/11/1964







Looking South Toward North Bennington @ Yard Limit
4/21/1962



Yard Limit Sign for No. Bennington 4/21/1962



Milepost 3 on Right looking Northbound Route 67 on Left
4/21/1962



Looking North Toward Rutland 4/21/1962



Looking Southbound Route 67 on Left



Looking Southbound MP #3 on Left



Small Bridge Between 1st and 2nd curve north of North
Bennington 4/21/1962 Bridge Cribbing Installed to Support 90
Class Locomotives



First Road Crossing North of No. Bennington 4/21/1962



Looking North 4/21/1962



Looking North - Bridge #59 Eagle Square Manufacturing Co. on
Left 4/21/1962



Bridge #59 Built by American Bridge Co. 1902

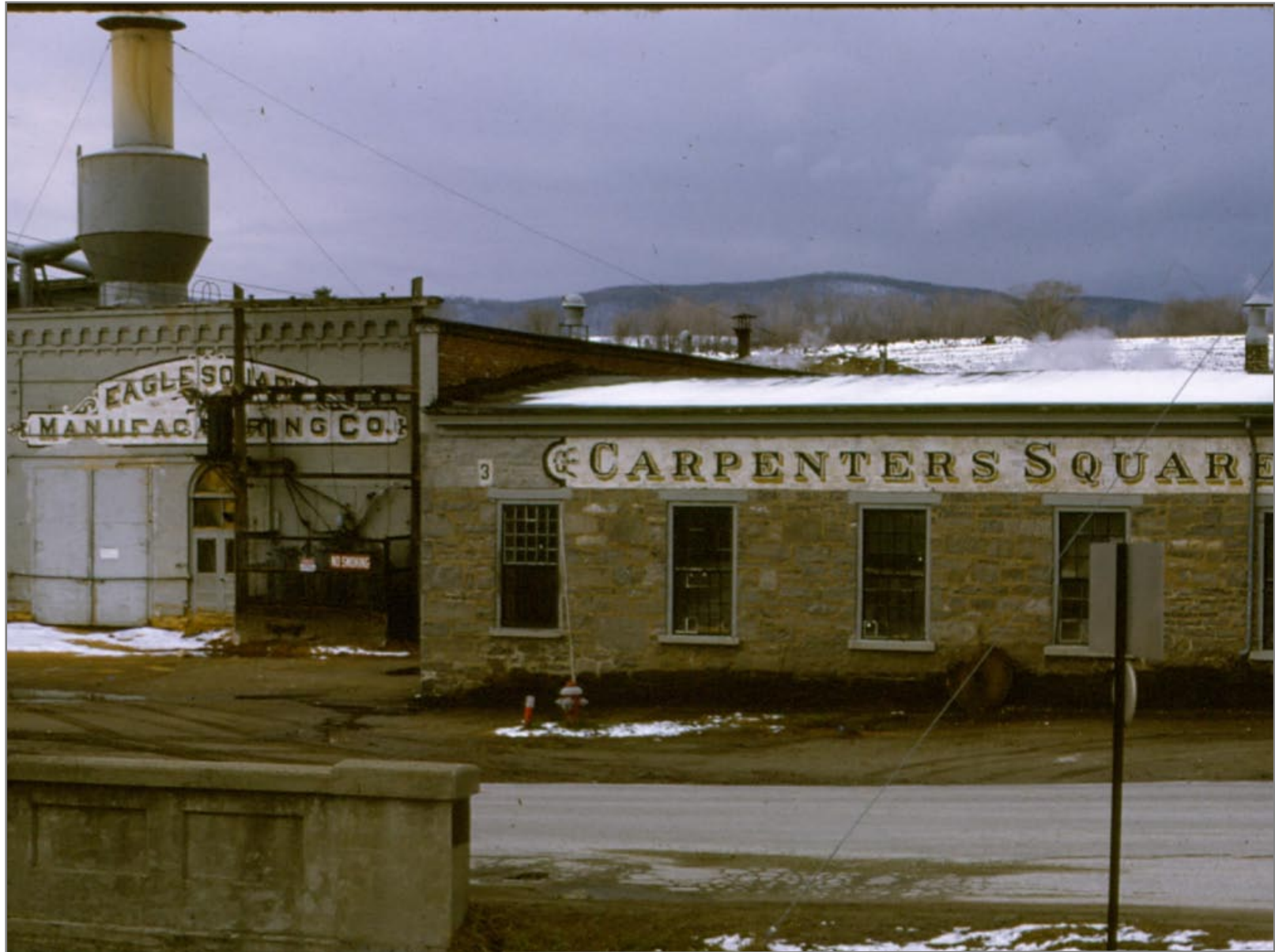




Looking Southbound Church Street Crossing 4/21/1962



Northbound Eagle Square on Left - Church Street Crossing
4/21/1962







Northbound w/ Switch to Eagle Square on Left 4/21/1962