



Poulin Collection - No.  
Dorset



Eastward at Crossing Just South of North Dorset Station Site  
5/26/1962



Northbound - South End of North Dorset Siding on Right  
5/26/1962









North Dorset Northbound 1950



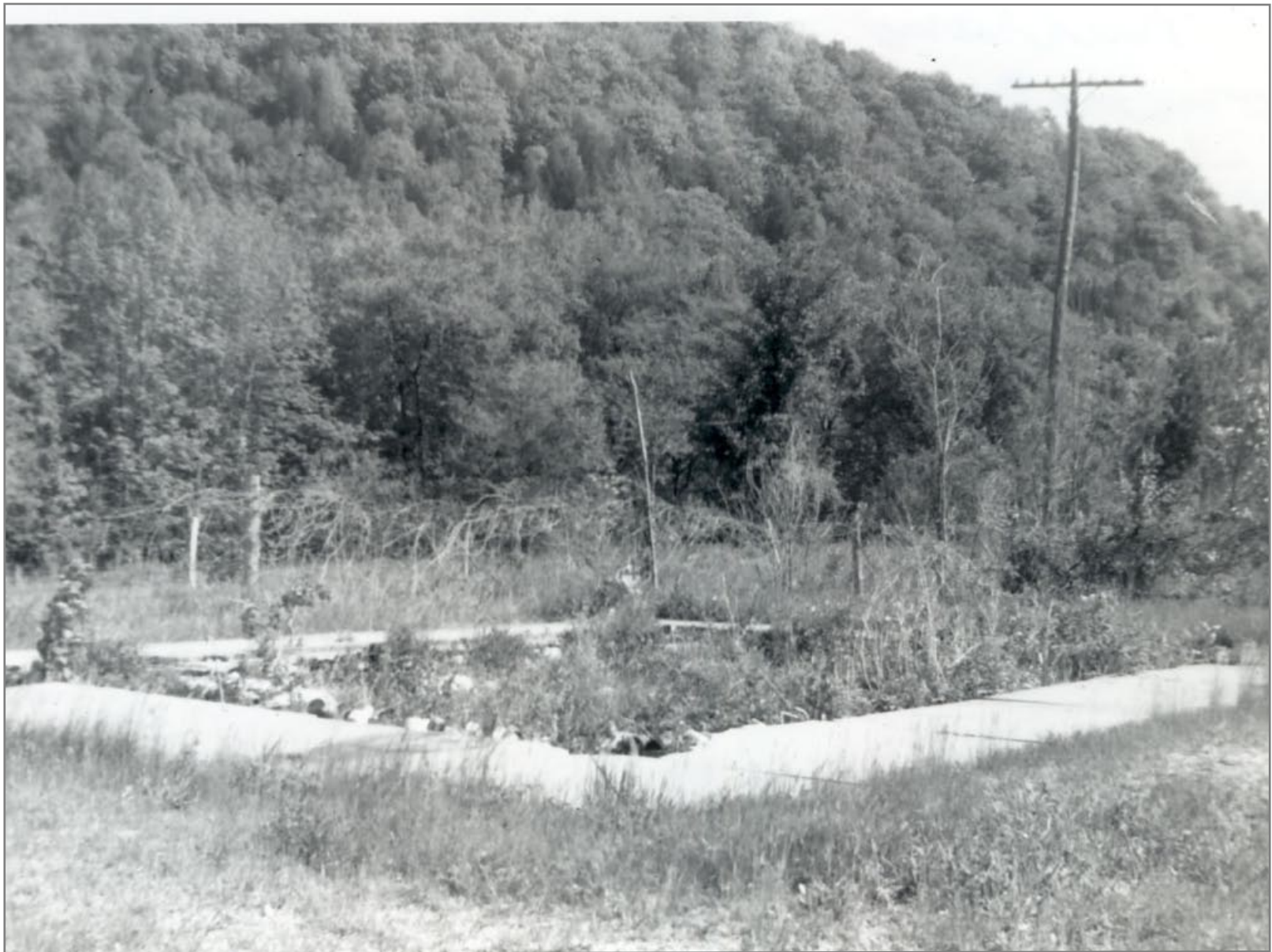
North Dorset Northbound 1950











North Dorset Station Site 5/27/1962



Site of Water Tank South of North Dorset Depot 5/26/1962











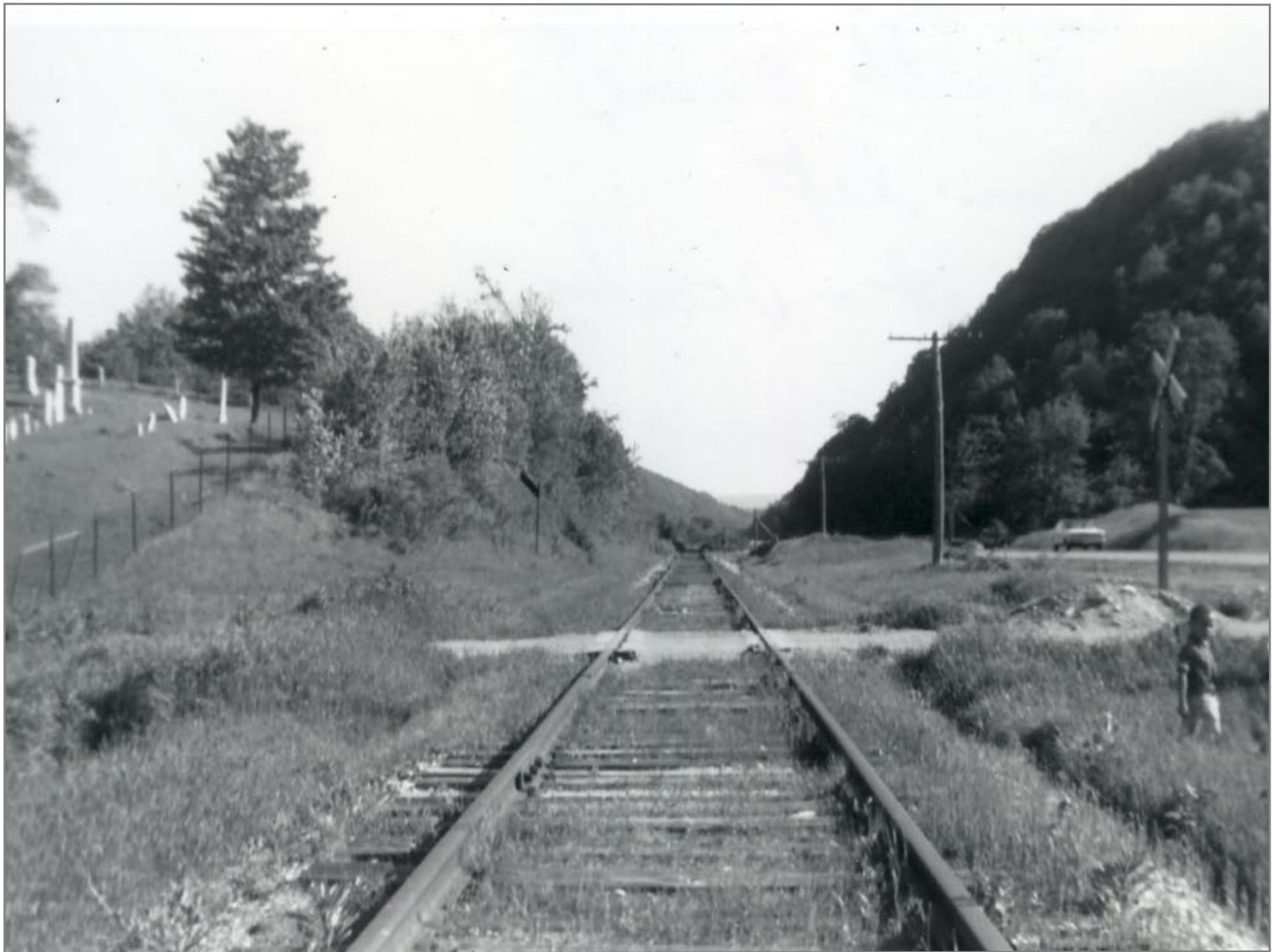








East View - Cemetary on Right 5/27/1962



Southbound 5/27/1962















Davis Siding

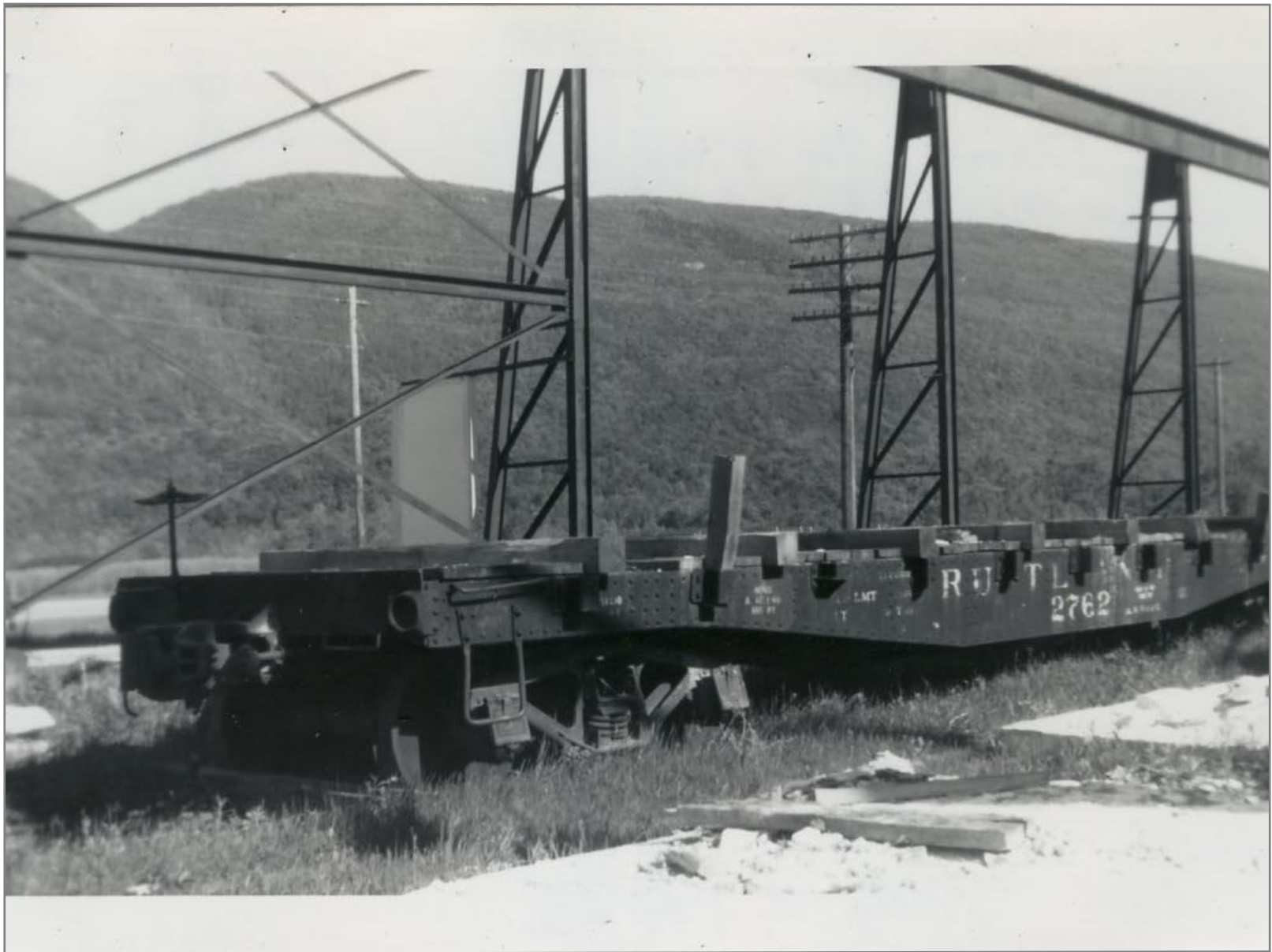












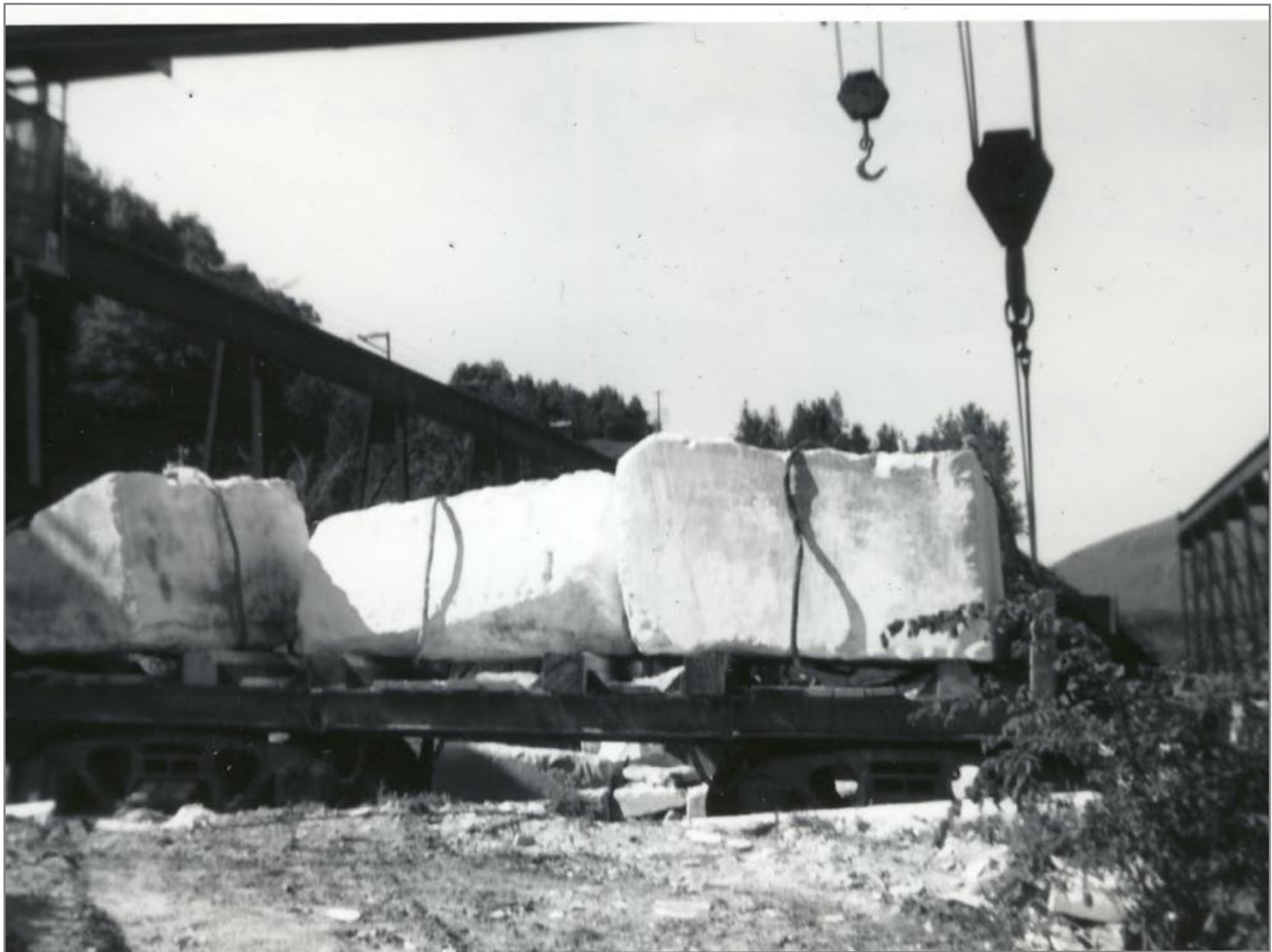
Rutland #2762 at Danby Quarry 5/27/1962



VT Marble 40 Ton Crane in Background 5/27/1962



Foot of Incline to Quarry Flat Car w/ 1-12" Cable Attached  
5/27/1962



Flat Car on Incline Track 5/27/1962



VT Marble Company 5/27/1962



Looking West up Incline 5/27/1962



VT Marble Company 5/27/1962



VT Marble Looking North 5/27/1962





Looking Northbound Track on Left is Long Siding of VT Marble  
- Track on Right Rutland Main 5/27/1962



Southbound 5/27/1962

















VT Marble Company 5/27/1962



Siding to Vermont Marble Company looking back to Main  
5/27/1962



Vermont Marble Company in Background Looking South  
5/27/1962



Northbound 5/27/1962



Southbound 5/27/1962











1st Crossing South of Danby Looking East 5/27/1962



