



Poulin Collection -  
Manchester

MP #21 South of Manchester 5/20/1962





Southbound Switch into Milk Plant 5/20/1962



Northbound Switch Into Bennington Cooperative Creamery  
5/20/1962





Crossing Just South of Manchester Station Looking West  
5/20/1962



Crossing South of Manchester 5/20/1962

















Looking Northbound at Manchester Station 5/20/1962





Northbound Looking at Manchester Station 5/20/1962





















Southbound thru Bridge 70 5/20/192



Northbound at Bridge 70 5/20/1962



Bridge 70 Manchester 5/20/1962

















Northbound At Manchester Station 5/20/1962













Manchester 7/30/1961



Manchester Spring 1952





Manchester Station 1951 Northbound



Manchester 1951





Manchester 9/1950



















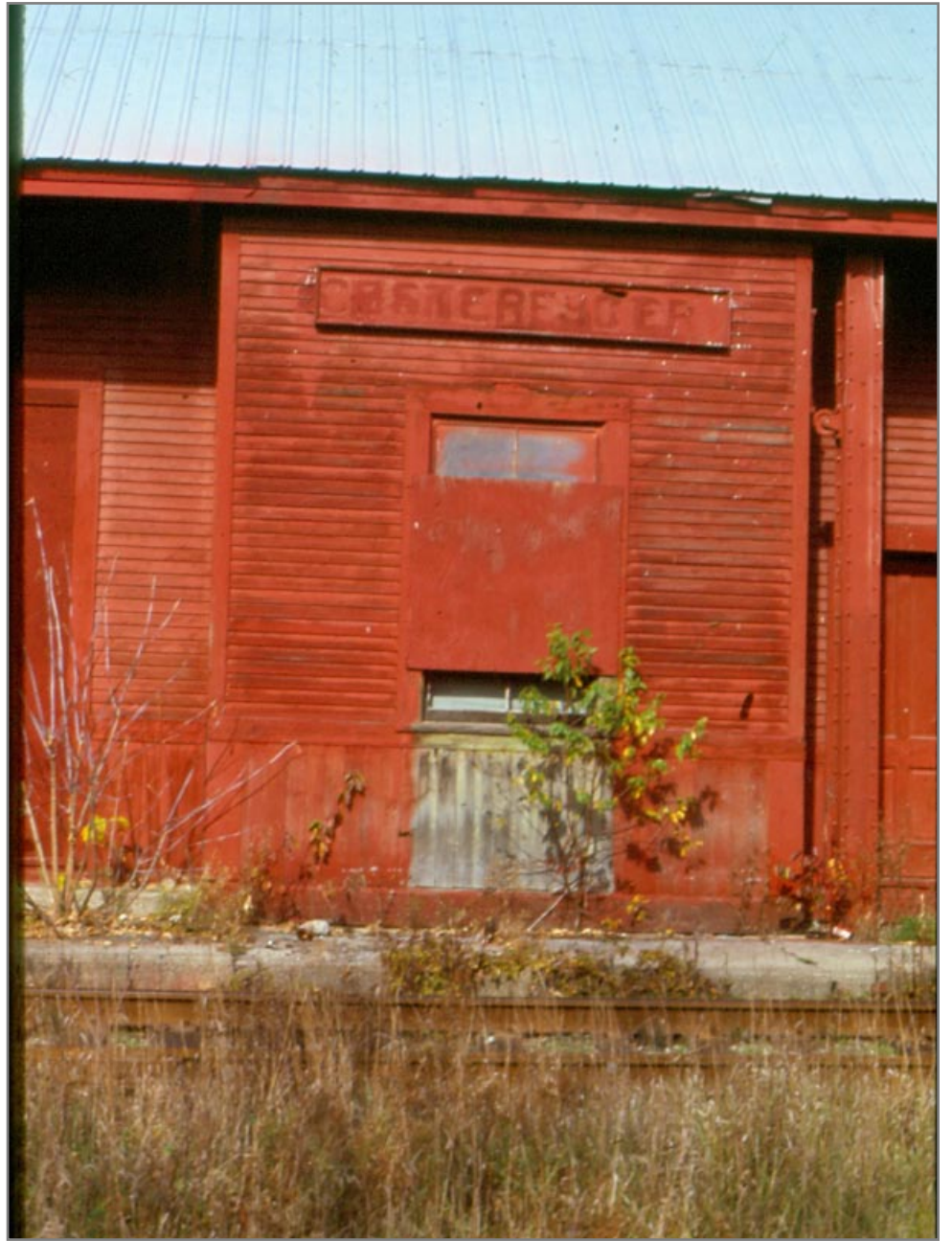
Street Side Manchester Station 5/20/1962



Manchester Station 5/20/1962







1971











Manchester Southbound 5/20/1962



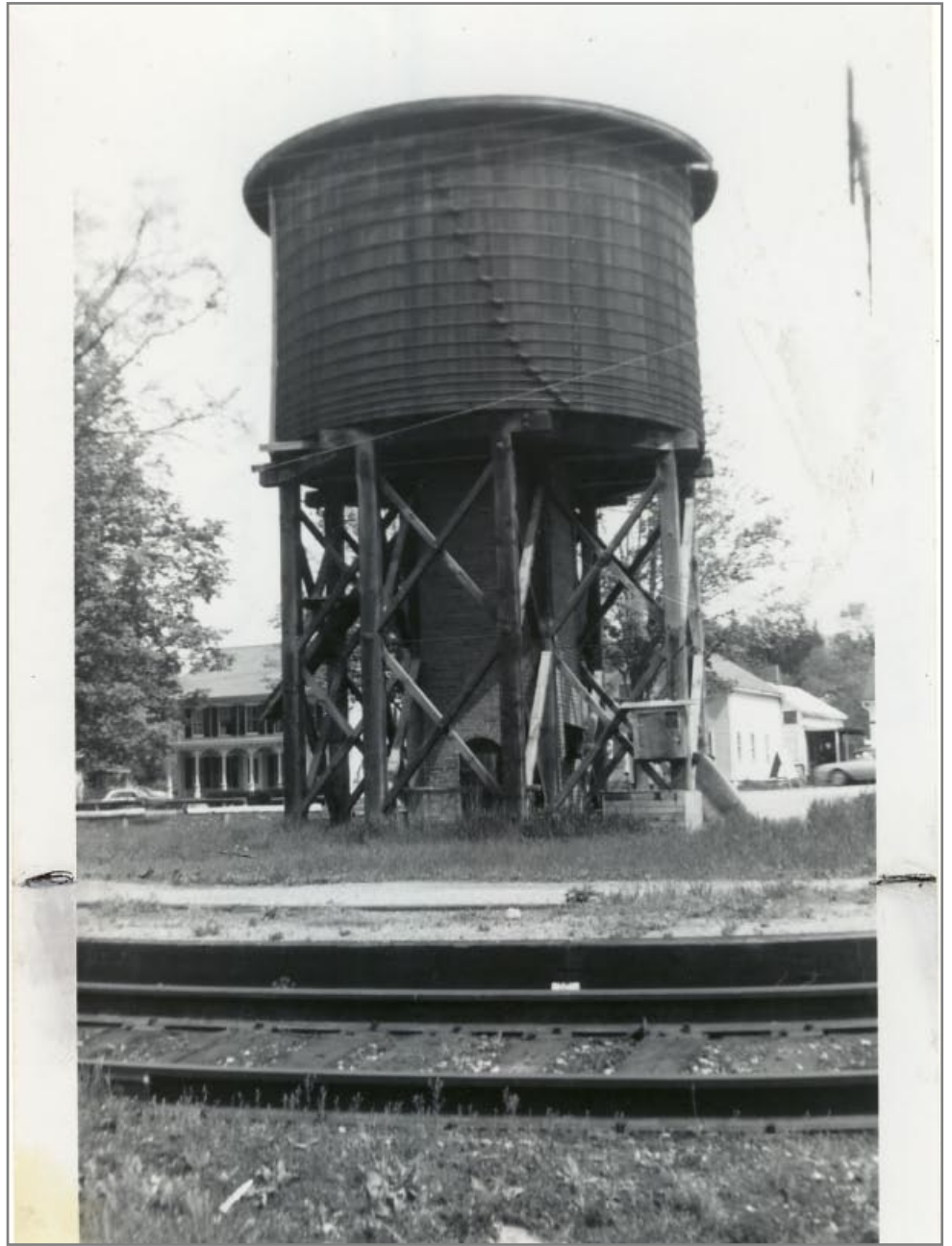
Manchester Southbound 5/20/1962











Water Tank Just North of Manchester Station 5/20/1962







Section House Manchester VT 5/20/1962



Southbound Manchester Station on Right 5/20/1962





Southbound Manchester Station on Right 5/20/1962



Northbound Out of Manchester 5/20/1962



















Bridge 71 Southbound Built by American Bridge Company 1903  
5/20/1962





Bridge 71 Northbound 5/20/1962















Bridge 71 Painted Aluminum 5/20/1962













Crossing Just North of Bridge 71 Manchester 5/20/1962



Crossing North of Bridge 71 5/20/1962 Looking East





Southbound Bridge 71 in Distance 5/20/1962



Switch to Pyrofax on Right Looking Southbound Toward  
Manchester 5/20/1962





Northbound Switch to Pyrofax on Left 5/20/1962

Milepost 24 5/20/1962









Private Crossing to Fish Hatchery Looking East 5/20/1962





Northbound Private Crossing at Fish Hatchery Bridge 72 in  
Distance 5/20/1962



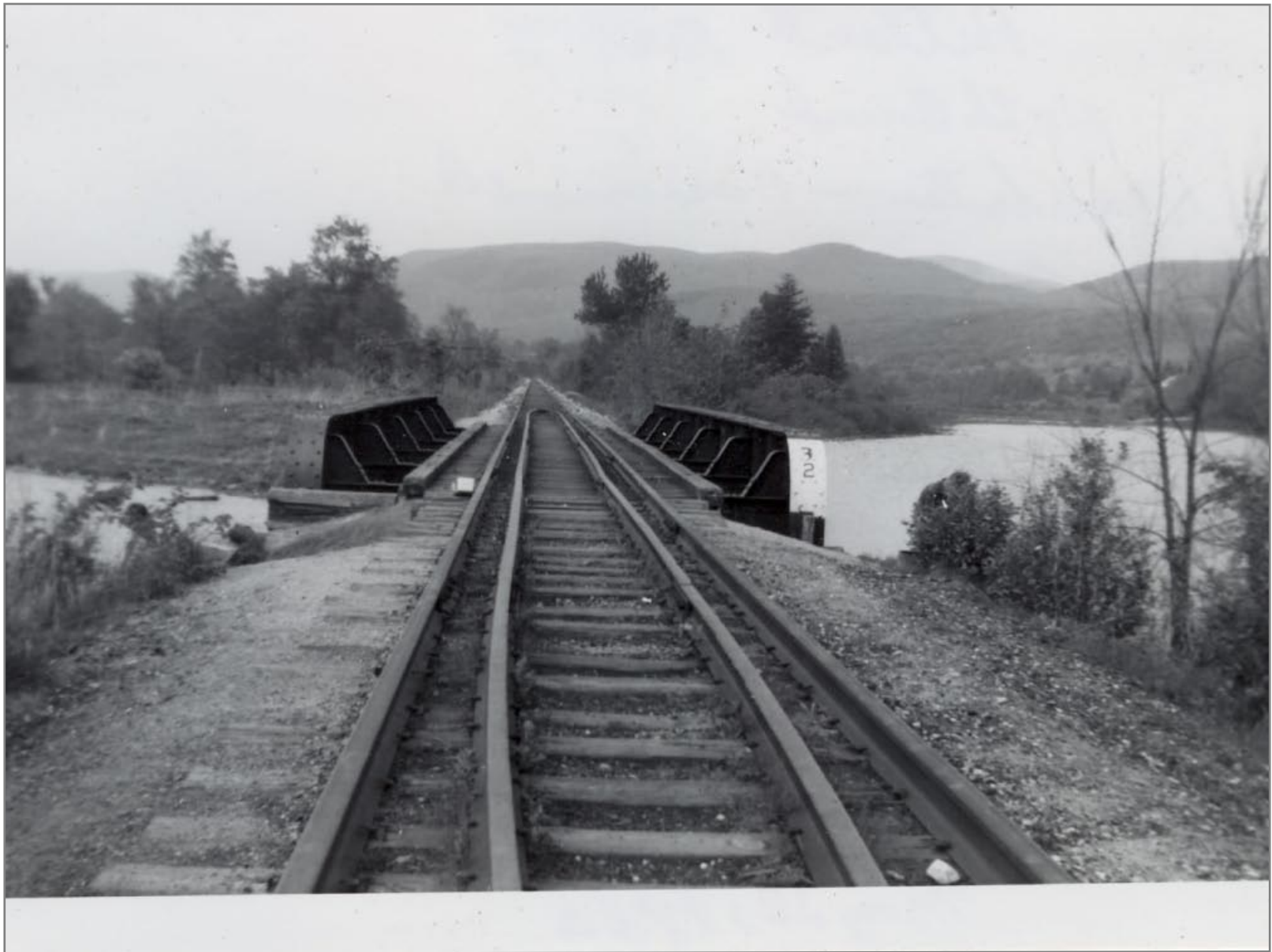












Bridge 72 Northbound Built 1903 American bridge Company  
5/20/9162



Bridge 72 Southbound 5/20/1962











Northbound 5/20/1962







Northbound at Barnumville Station Site on Left 5/20/1962



Northbound - Rail Storage Rack on Left 5/26/1962