



Poulin Collection -  
Bennington



State Line Monument 9/6/1958



Anthony Siding before Bennington 1951



Heading into Bennington Crossing Route 7



Looking South from Bennington Station Platform @ Beginning  
of Chatham Branch 9/19/1961



Bennington Station



No. 74 at Bennington Station Winter 1952



PASSENGER STATION AT BENNINGTON—RUTLAND RAILROAD.



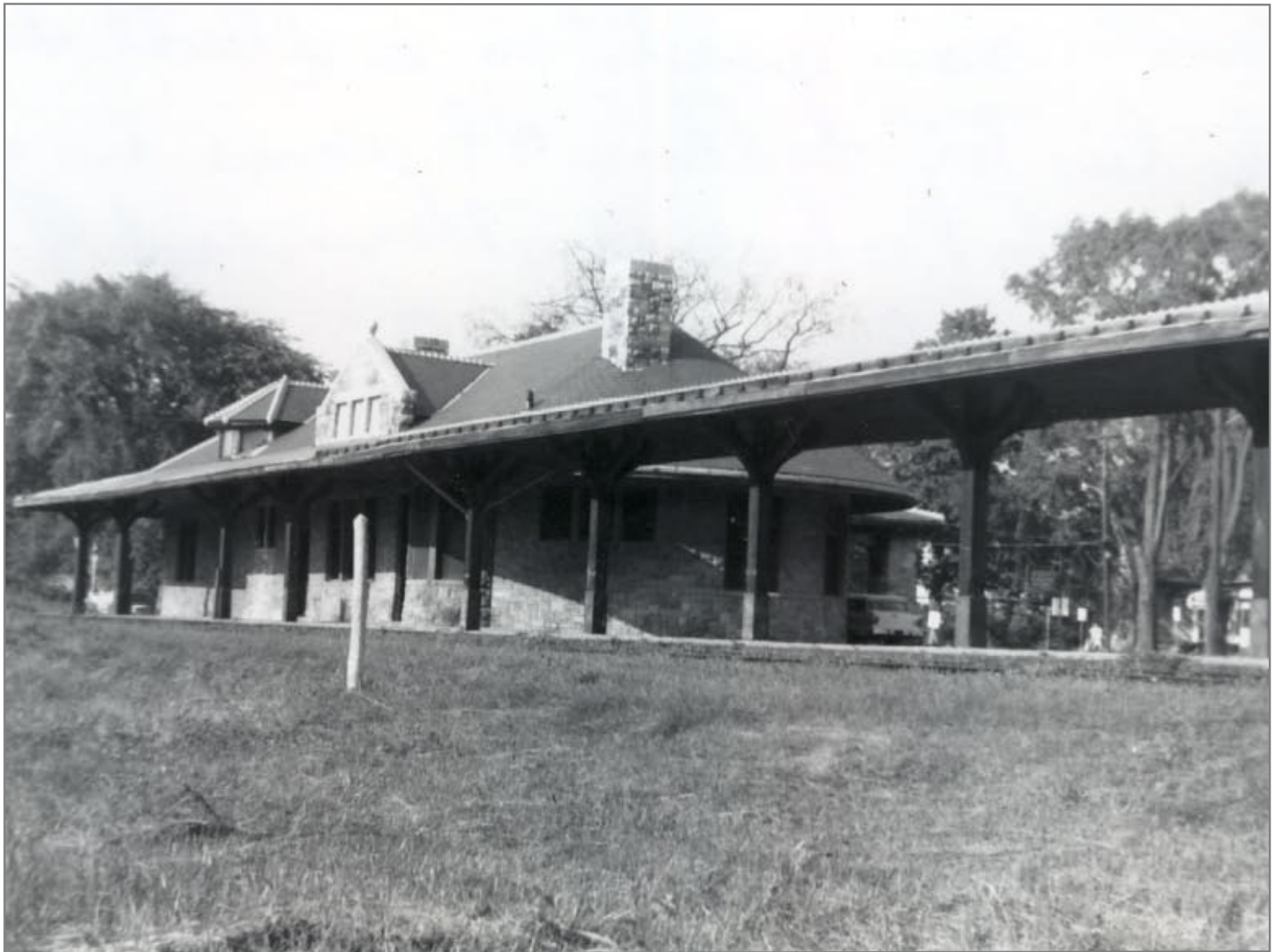
Y. C. R. R. Station, Bennington, Vt.



Bennington Station



Bennington Station 7/31/1960



Bennington Station 9/10/1961



Bennington Station 9/10/1961





Bennington Freight House



Bennington freight House



Bennington Freight House





Bennington Freight House



Bennington



Bennington







Rutland RR Yard and Freight House In Bennington, Switch Stand to right is where Bennington & Glastenbury RR joined the Bennington and Rutland RR in 1872-1890. 4/10/1962



Bennington Freight House







Bennington Freight House 3/10/1962



Looking North From Bennington Yard 3/10/1962



Freight House Looking East 4/20/1962



Bennington Freight House 4/20/1962



Bennington Station Looking North toward Rutland RR Yard  
4/20/1962







Rutland Yard in Bennington, VT





Rutland RR Yard, Bennington, VT



No. 74 w/ Caboose at Bennington 2/1953



No. 74 on Turntable @ Bennington Spring 1953



Bennington Spring 1953



Bennington Turntable Spring 1953



Bennington Yard



Bennington Yard



Bennington Yard 4/20/1962





Engine #74 on Bennington Turntable



AUG • 60

Rutland ROW Crossing Main Street in Bennington 8/1960



Bennington Branch Crossing Street - Bennington Station on  
Right 4/20/1962



Rutland RR Branch up County Street, Bennington, VT  
4/21/1962



Rutland RR Branch Crossing North Street Looking West Toward  
Freight House 4/21/1962



Rutland Branch Line Crossing North Street/US Route 7 - branch  
Line was Formerly Bennington and Glastenbury RR then  
Bennington & Woodford Electric RR 4/21/1962



End of Rutland Branch Line Looking West 4/21/1962



Branch Crossing County Street Looking West Freight House in  
Distance 4/20/1962





Rutland RR Branch Crossing Streets Looking East 4/20/1962



Rutland RR Looking South in Bennington 4/20/1962

















Looking Southbound into Bennington From Route 7 Crossing  
4/20/1962





















Looking South from North Side of Route 7 4/20/1962



Crossing Route 7 Looking South into Bennington 3/23/1962



Chatham Branch Battery Boxes for Crossing Signals on Route 7  
near Bennington 8/1960



Looking North across Route 7 Just North of Bennington MP 58  
on right 3/22/1962













Bridge over Roaring Brook built by American Bridge Company  
1903 Left to North Bennington 4/20/1962























Bridge #55 Looking North 4/20/1962



Bridge #55 Looking South 4/20/1962



Looking South to Bennington 4/20/1962



Looking South to Bennington - Bennington Battle Monument  
in Distance 4/15/1962



Looking North - Bridge over Oakers Stream Morse Block in  
Distance 4/15/1962







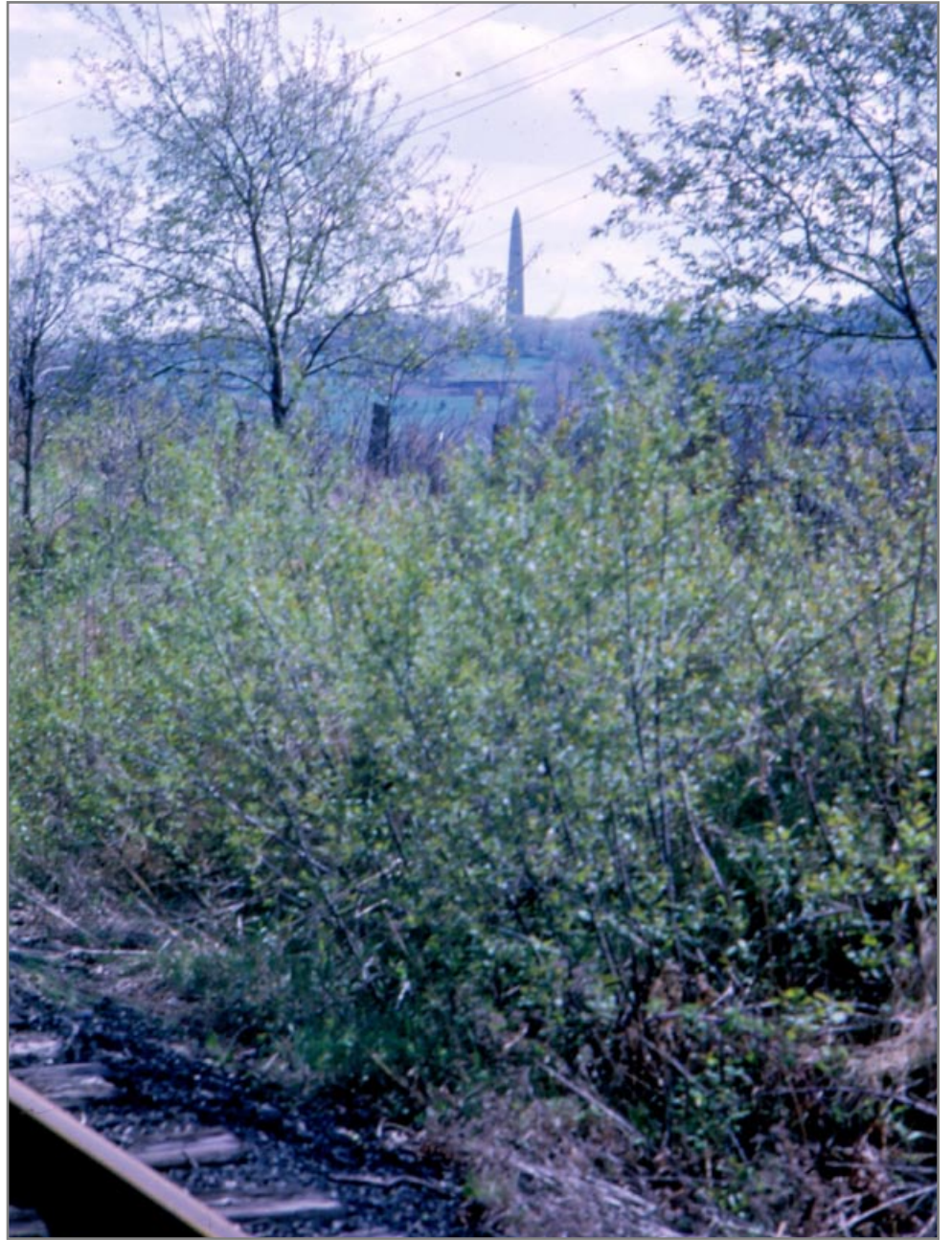


Looking South at Bridge over Oakers Stream 4/15/1962



Bridge over Route 7 Built 1914 4/15/1962



















Bridge over Route 7 Looking North Morse Block to Left  
4/15/1962



Morse Block, Bridge over Route 7 in foreground 4/15/1962











Looking South Morse Block in the Distance 4/15/1962





Looking South at Switch into Morse Block 4/15/1962



Looking North from Highway Hick's Crossing - Road to  
Brooklyn School 4/15/1962



Looking South at Willow Road Crossing with Hick's Crossing in  
Distance 4/15/1962



View of Willow Road Crossing, Route 7 and VT Route 67 in  
Distance 4/15/1962



Looking North from Willow Crossing 4/15/1962



Looking North just North of Overlea Crossing 4/15/1962





Looking North 4/15/1962



Looking South 4/15/1962



Looking South Toward Rock Cut 4/15/1962



















Looking North at Embankment thru Lake Paran 4/15/1962



Looking North Overlee Road Crossing South of North  
Bennington 4/15/1962



Looking East at Overlee Road Crossing 4/15/1962



Looking North to Rice Lane Crossing 4/15/1962



Rice Lane Crossing 4/15/1962



Overlee Road Crossing Looking Northeast 4/15/1962





Looking North at Overlee Crossing 4/15/1962



Hick's Crossing Looking South 4/15/1962



Looking South at Rice Lane Abandoned Siding on Right  
Beyond Crossing to Johnson & Dix Oil ( Shell ) 4/15/1962













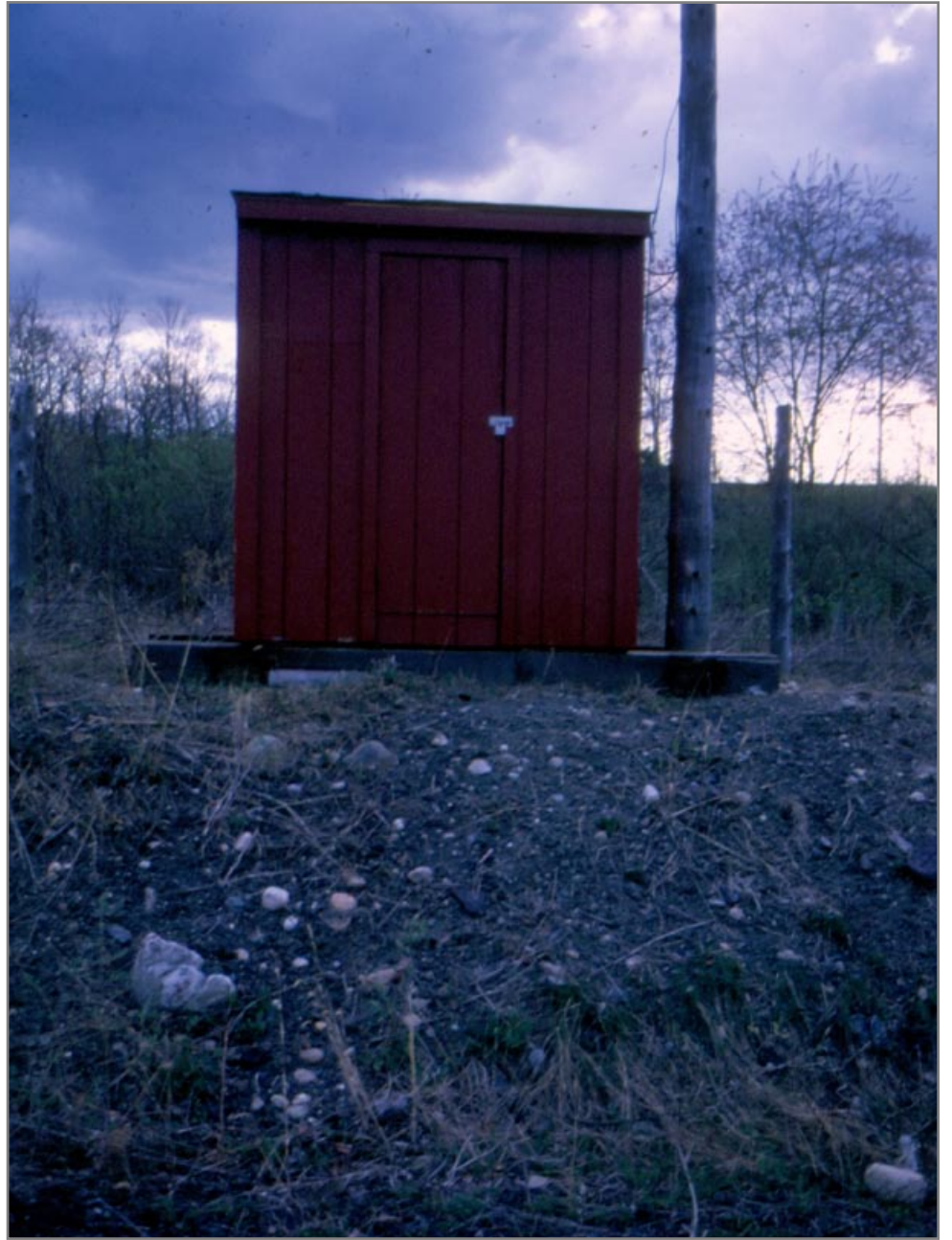










































































































Looking South Toward Bennington Lake Paran on Left 10/1960







Looking South from North Bennington - Bridge is over outlet of Lake Paran, Coal Dealer on Left after Bridge 4/15/1962