



Poulin Collection -
Bartonsville



Northbound into Bartonsville



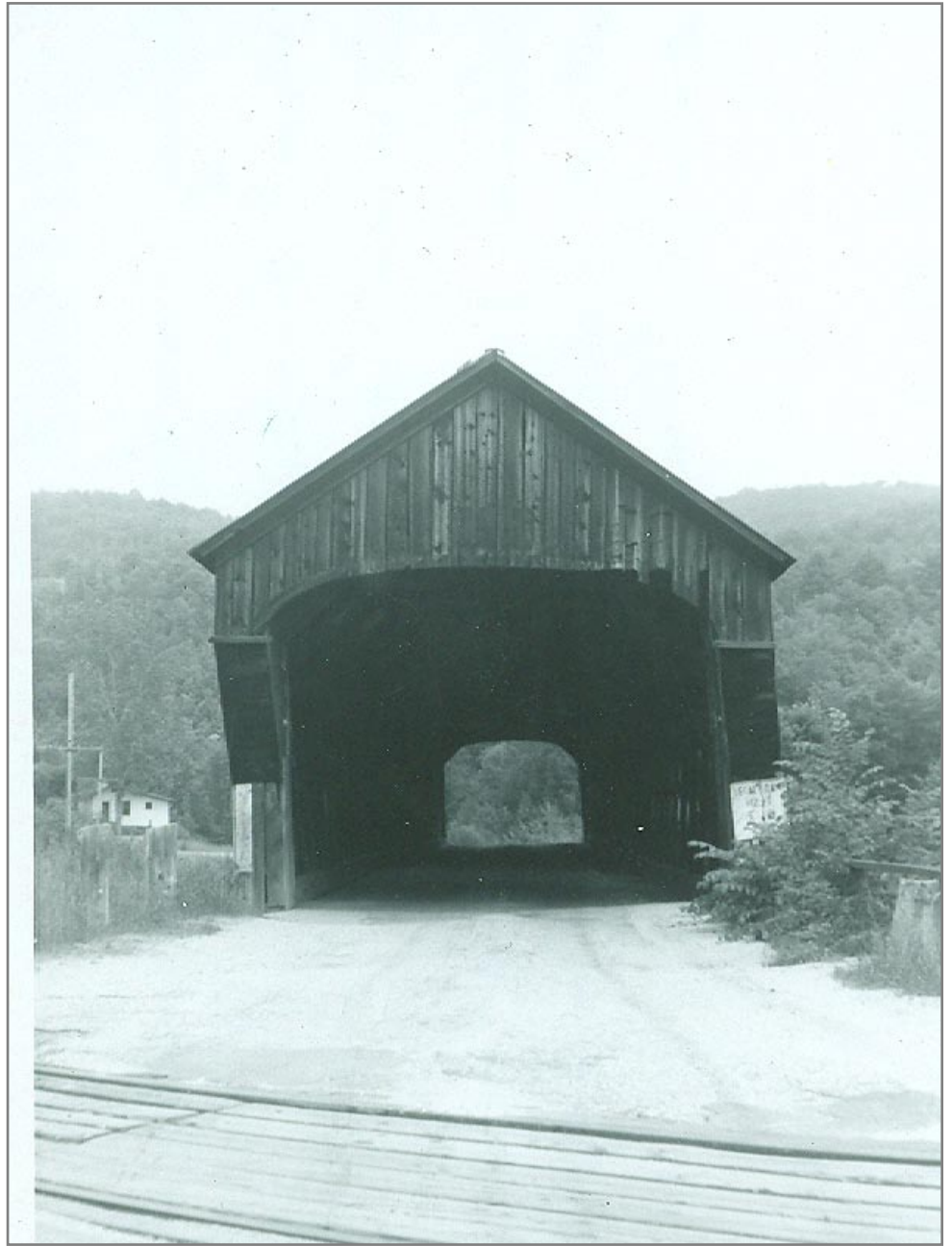


South @ Bartonsville









Bartonsville Looking east



Northbound @ Bartonsville



Bartonsville



Southbound @ Bartonsville- Former station site at right





Nothbound at Bartonville Station site on left



Southbound @ MP10



Northbound between MP 10-11















Bridge 114 BLT 1899



Southbound Bridge 114 in distance















Looking East at 2nd crossing south of Chester



2nd Crossing south of Chester looking westward



South of Chester



Bridge 115 Southbound



Bridge 115 BLT 1936 44 feet long







Northbound @ Bridge 118



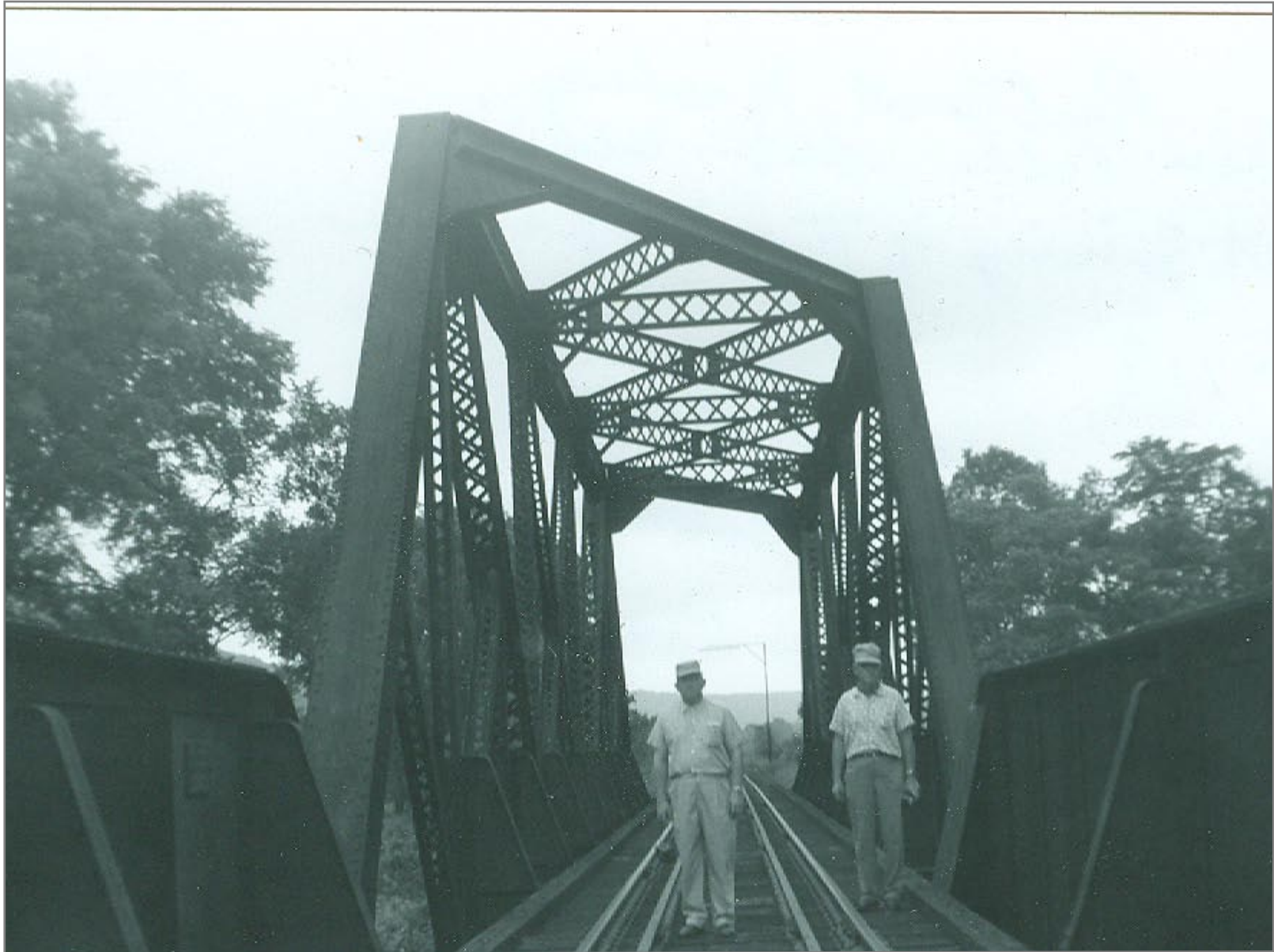












Bridge 118 Southbound North of Bartonville 7/15/62



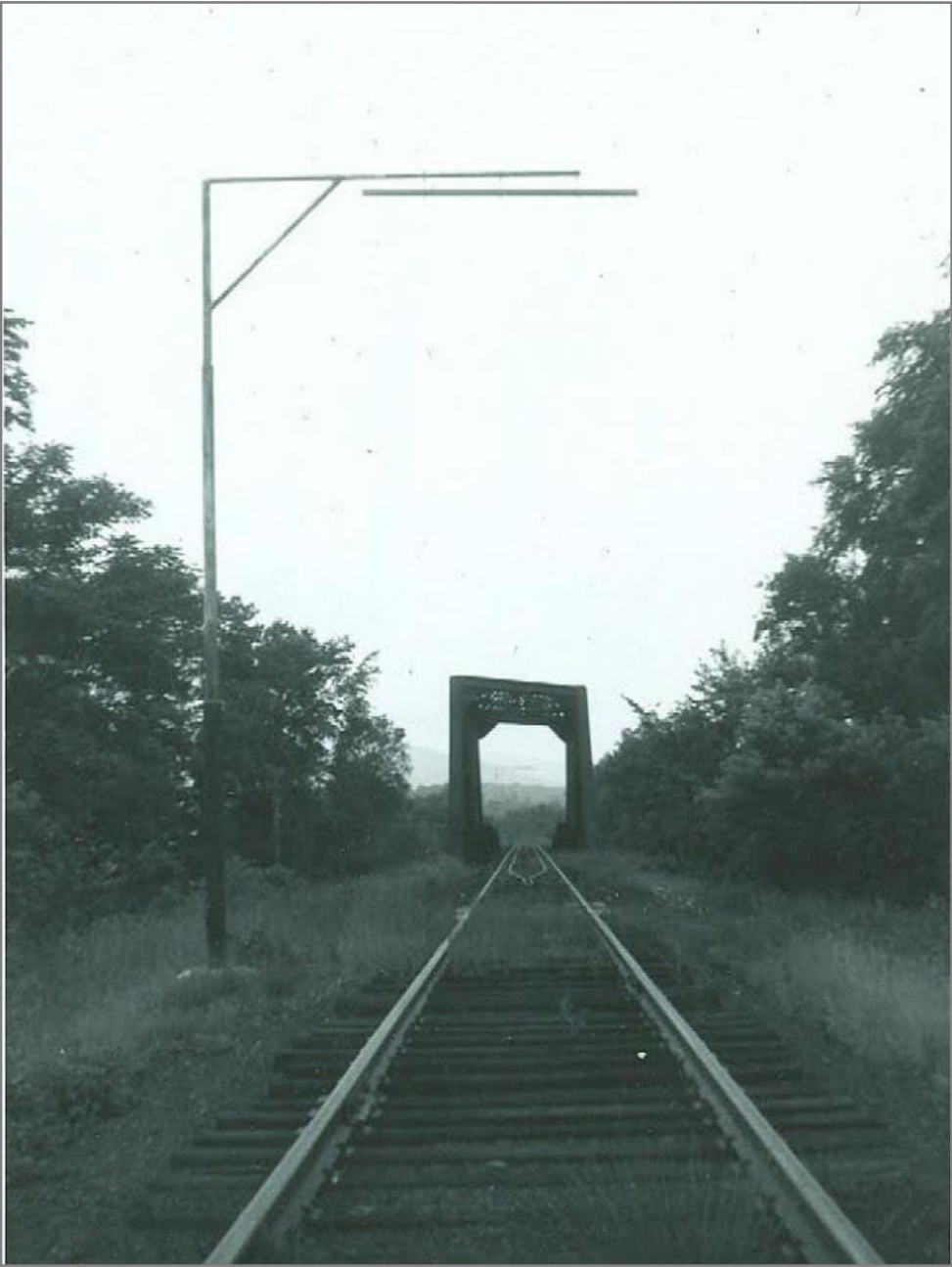


Southbound @ Bridge 118 BLT 1903





Bridge 118 Northbound





Bridge 119 Northbound over Williams River



Bridge 119 south of Chester looking South



Mile post 13 on left - looking west



MP 13













