



Poulin Collection -  
Alburg



Northbound into Alburg 5/26/63



1st crossing south of Alburg 5/26/63



Southbound out of Alburg 5/26/63



Northbound over Route 2 into Alburg 8/10/62



Bridge over Rte 2 Looking West 8/10/62





East at Bridge over Route 2 South of Alburg 8/10/62



Northbound into Alburg 5/63





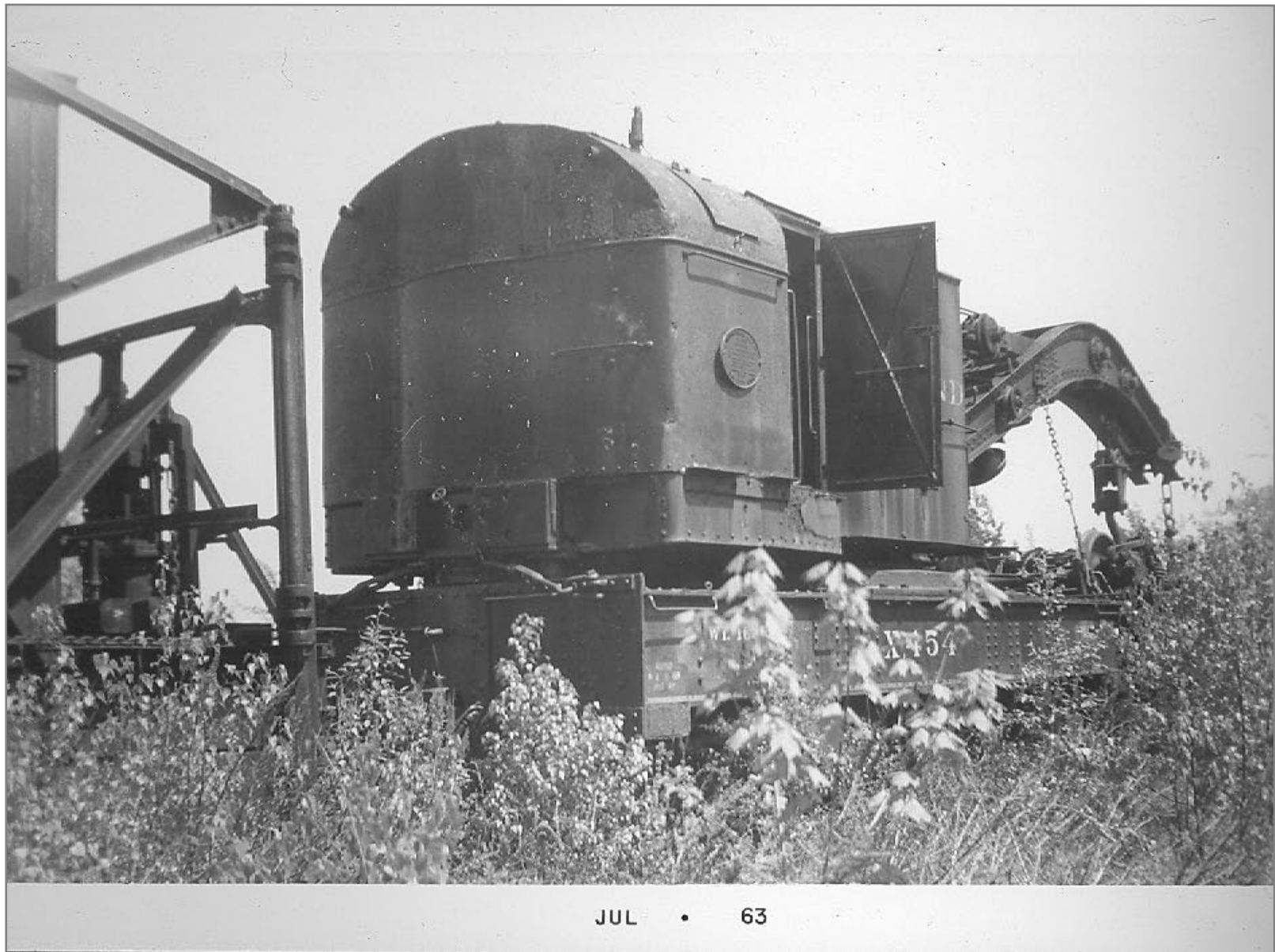
Alburg Scalehouse North



Alburg Scalehouse



Alburg



Alburg X454



Alburg Plow X104





Alburg Engine House 5/26/63





Alburg Yard Office 5/26/63



Southbound out of Alburg 5/26/63



Northbound in Alburg Yard 5/26/63



Alburg Union Station Southbound to right 6/11/61



Alburg 8/11/62



Alburg 5/26/63





Alburg 8/10/62



Alburg Looking South 5/26/63



Alburg 5/26/63



Looking West in Alburg station to the right 8/10/62



Southbound in Alburg 8/10/62



Alburg Section House opposite station 8/11/62





Alburg CV on left/Rutland right Southbound 8/11/62



Northbound out of Alburg MP120 to Ogdensburg CV on left  
5/26/63



Interchange w/ CV - CV tracks on left Southbound 8/11/62



Southbound at Rouses Point trestle - CV on left - CV yard limit sign on left Lake Champlain on right 8/11/62



CV tracks on left, Rutland on right in weeds, CV Alburg Yard  
Limit sign 8/11/62





Windmill Point - CV on left, Rutland on right 8/11/62





Windmill Point Crossing near Rouses Point trestle 8/11/62



Rouses Point Trestle 8/11/62 Westbound to NY 8/11/62



Southbound to Alburg at east end of trestle 8/11/62



Southbound to Alburg on Rouses Point Trestle



Southbound on Rouses Point trestle



Looking West into NY 8/11/62





West into NY Rouses Point 8/11/62



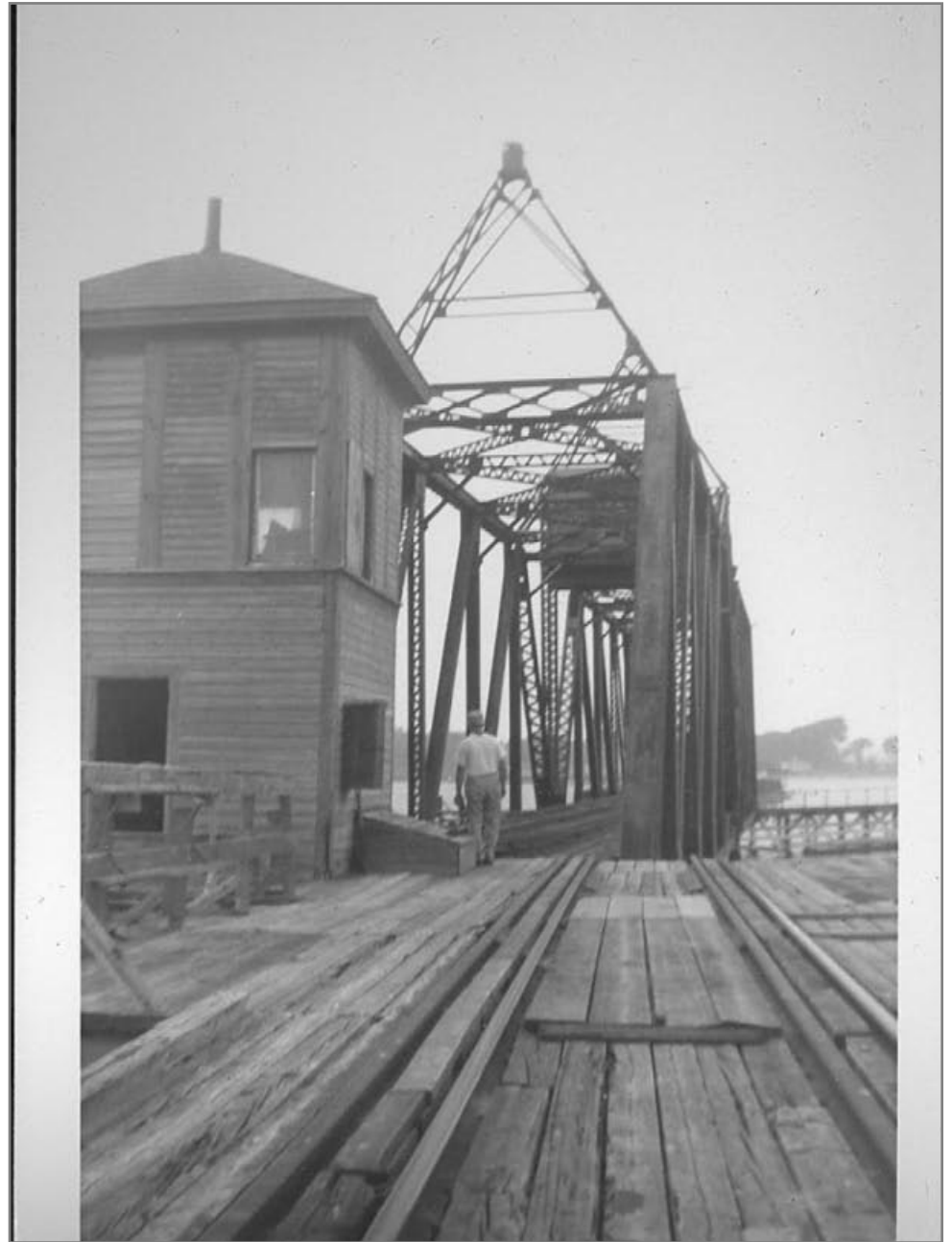
West to Rouses Point 8/11/62



Rouses Point Trestle Looking East 8/11/62



Eastbound on Rouses Point Trestle from Drawbridge 8/11/62



Rouses Point Draw looking west 8/11/62



Rouses Point Draw

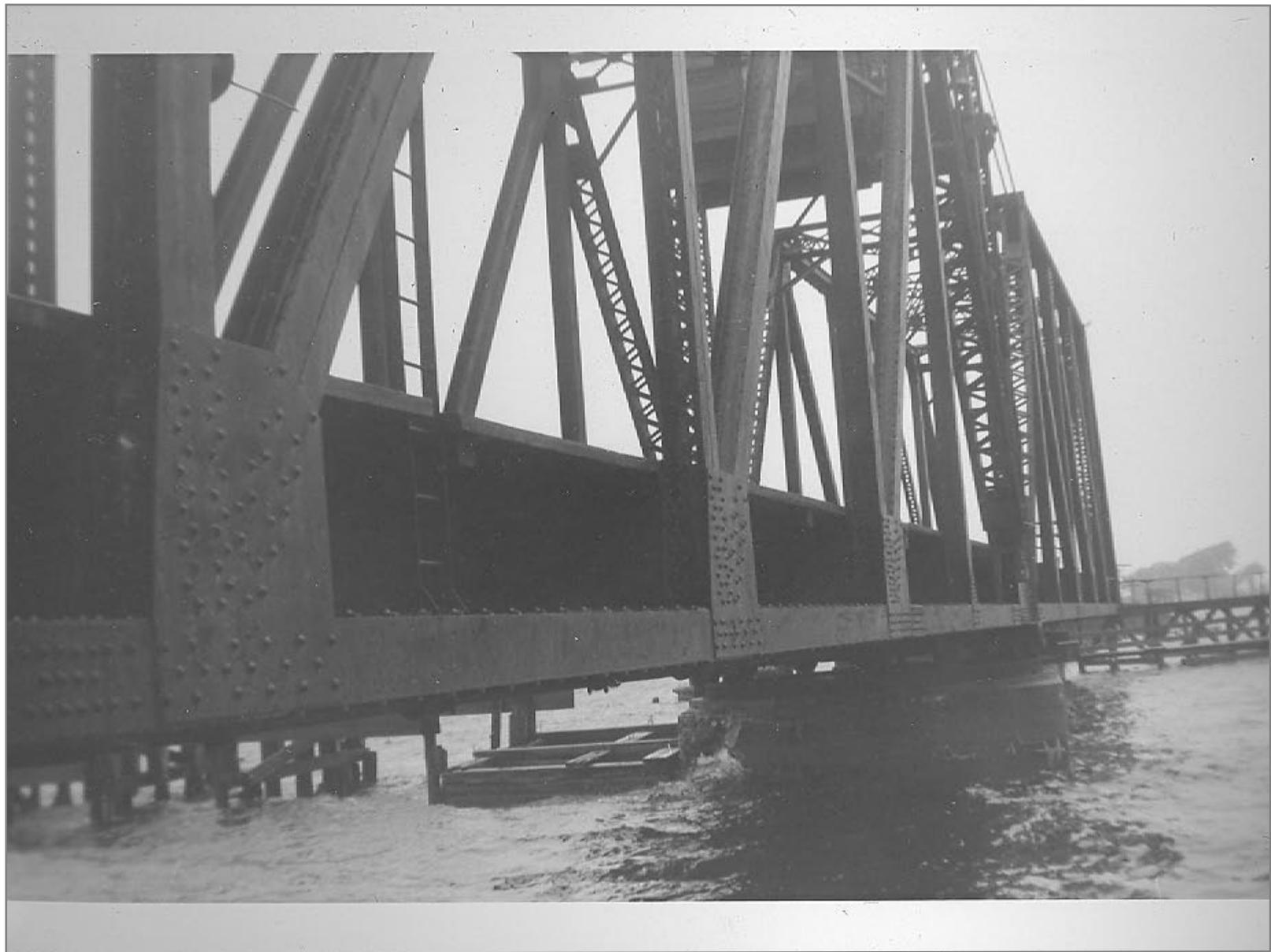


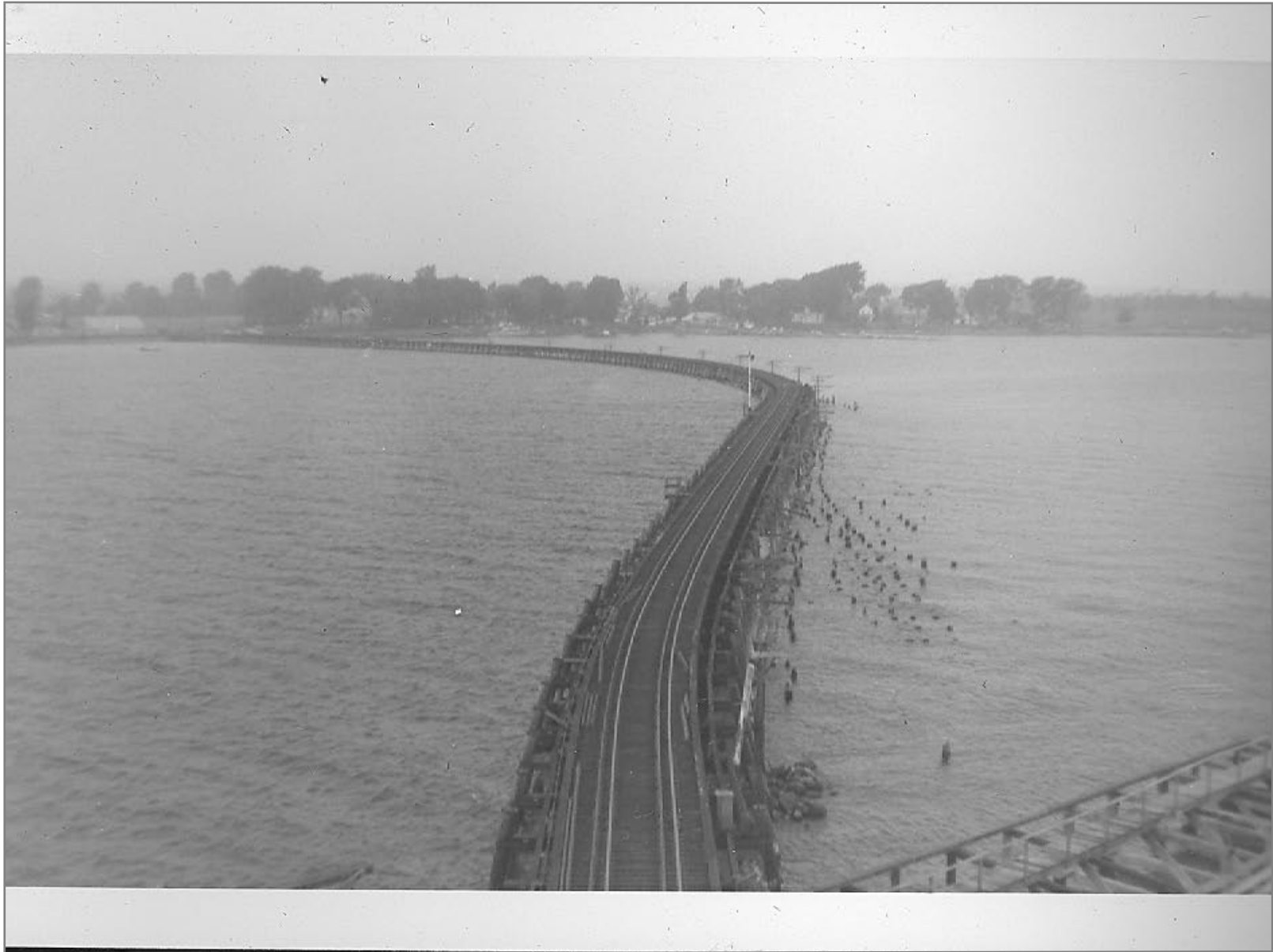


Rouses Point Draw looking east 8/11/62

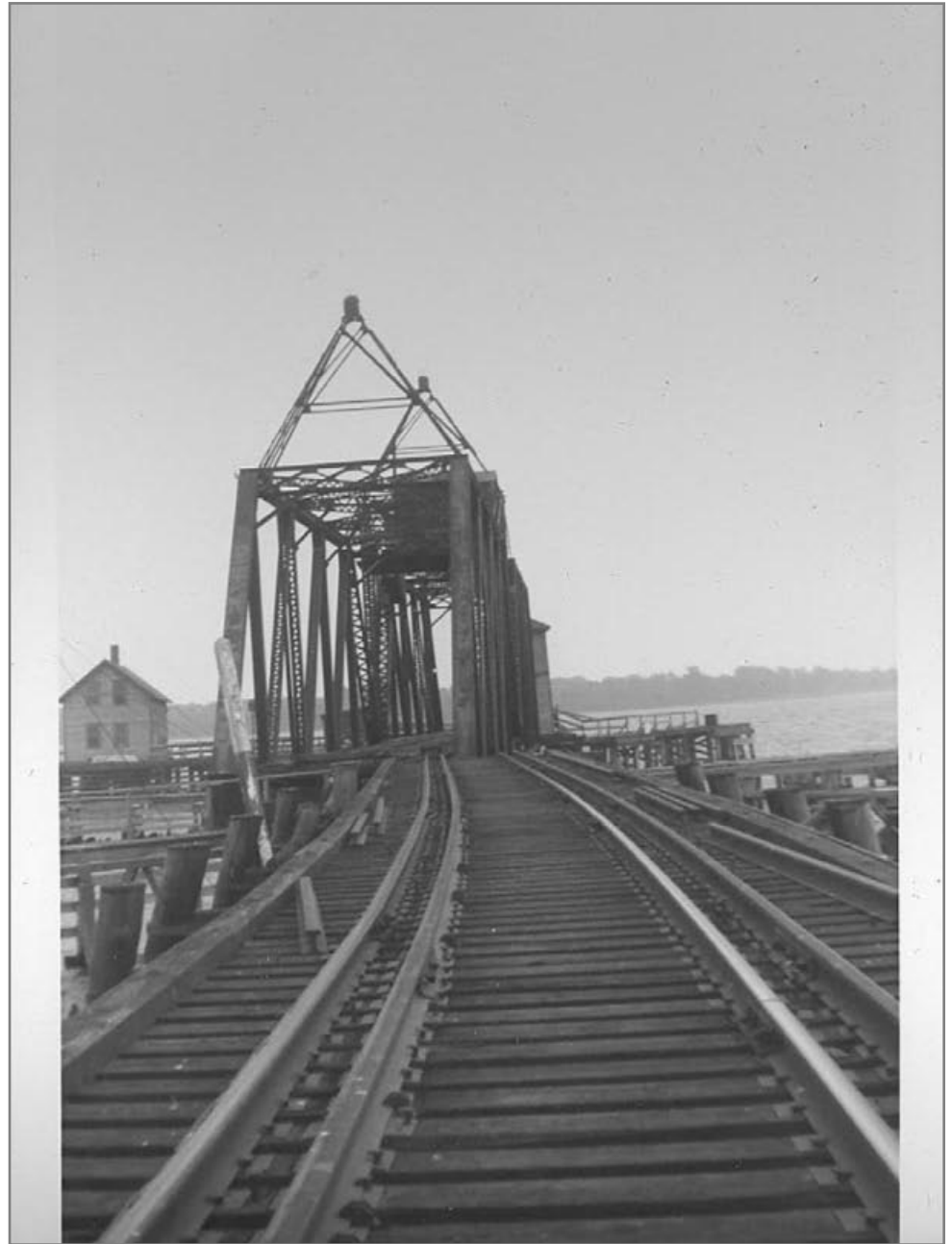


Looking East at Rouses Point trestle 8/11/62





Looking west from Drawbridge 8/11/62



Looking East Built American Bridge Co. 1906 8/11/62



West to NY 8/11/62



State Line 8/11/62





West into NY



East toward VT 8/11/62