



# Middlebury Elementary

By MiddZEST





Context



Building



Systems



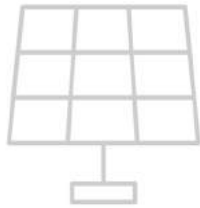
Energy



Finance



Affordable  
Efficiency



Visible  
Engineering



Inspirational  
Beacon



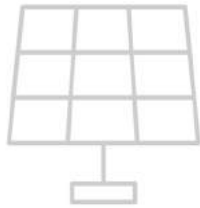
Experiential  
Collaboration



Resilient  
Design



Affordable  
Efficiency



Visible  
Engineering



Inspirational  
Beacon



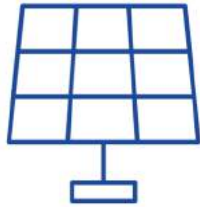
Experiential  
Collaboration



Resilient  
Design



Affordable  
Efficiency



Visible  
Engineering



Inspirational  
Beacon



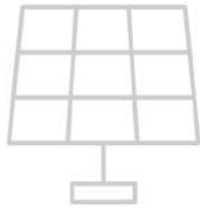
Experiential  
Collaboration



Resilient  
Design



Affordable  
Efficiency



Visible  
Engineering



Inspirational  
Beacon



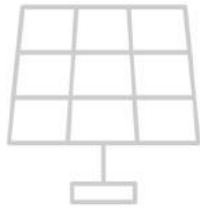
Experiential  
Collaboration



Resilient  
Design



Affordable  
Efficiency



Visible  
Engineering



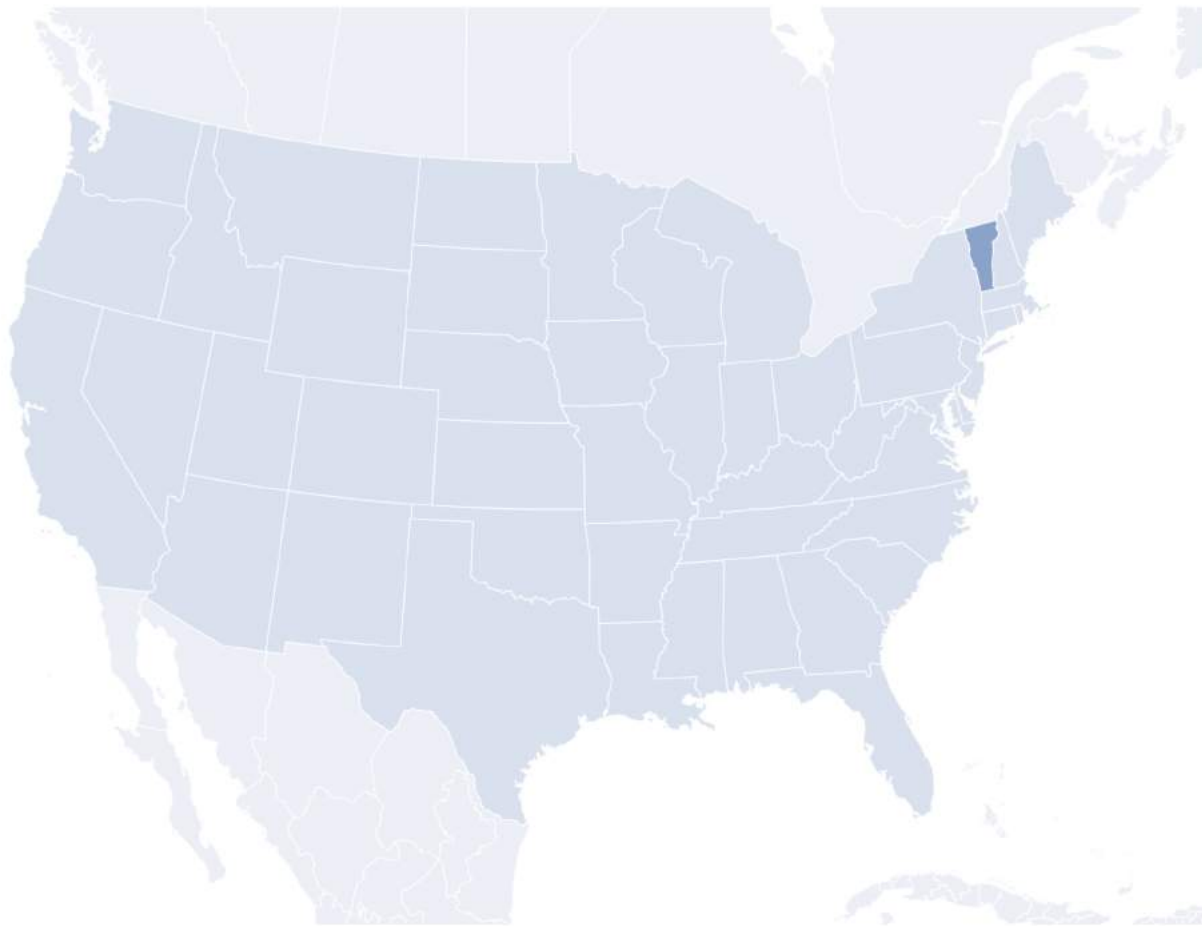
Inspirational  
Beacon



Experiential  
Collaboration



Resilient  
Design



**Middlebury,  
Vermont, USA**



Location





Middlebury,  
Vermont, USA





## Location





Middlebury Union  
Middle School

Jeffrey Murdock  
Nature Preserve

Middlebury  
Elementary

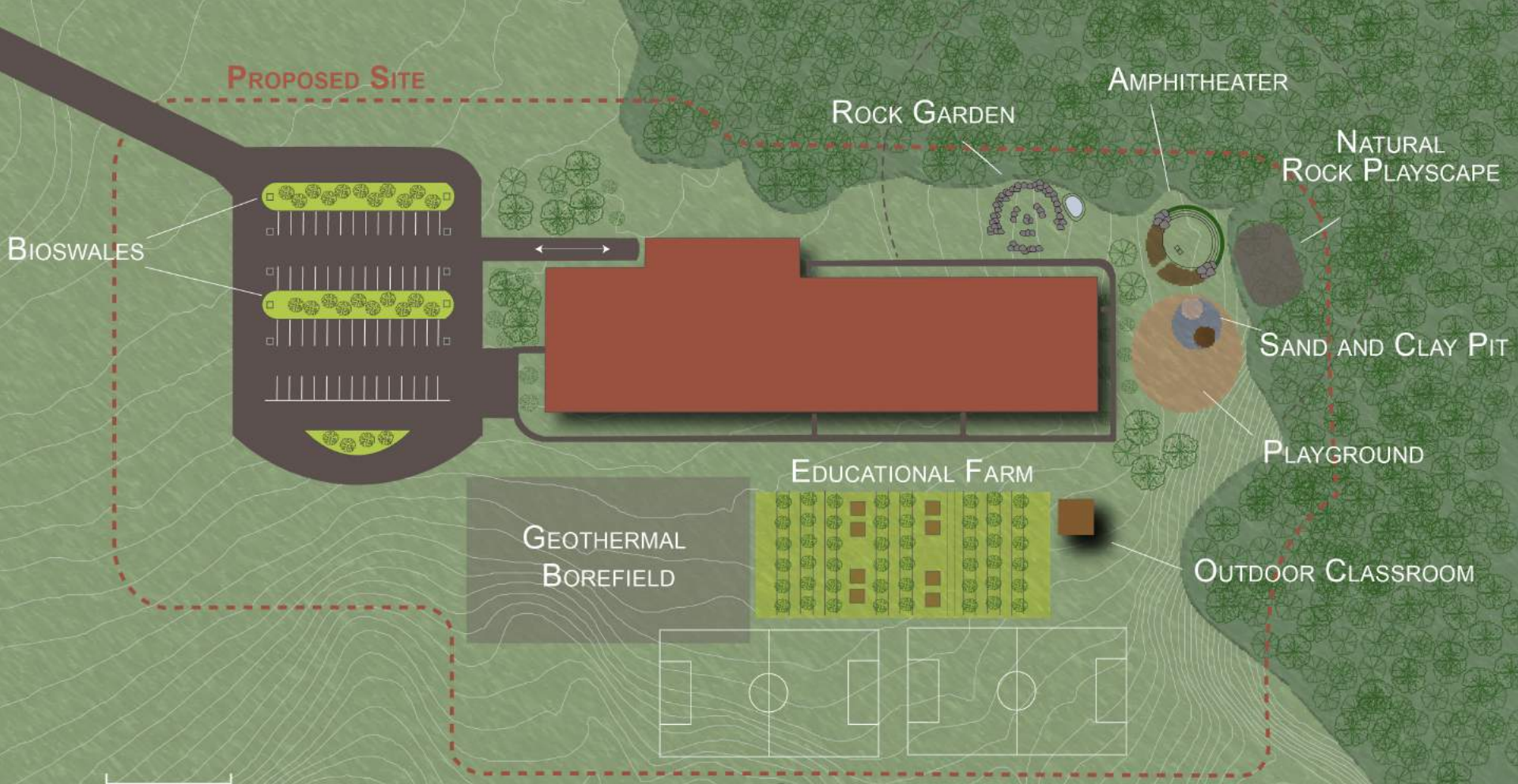
N

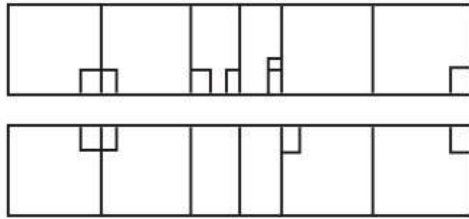
0.3mi



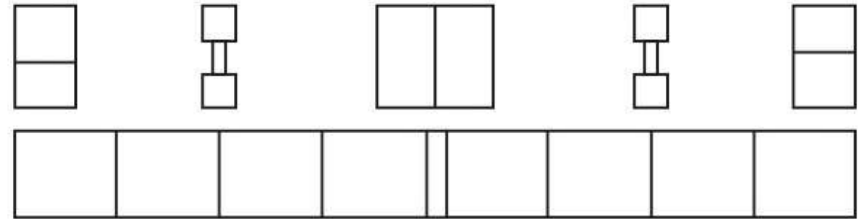
Location



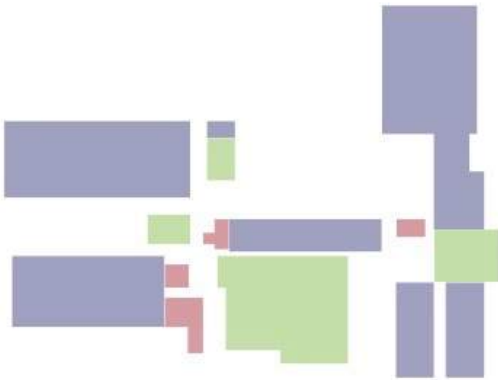




Traditional Hall



Class Neighborhoods

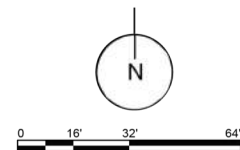
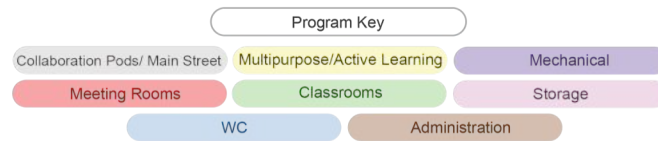
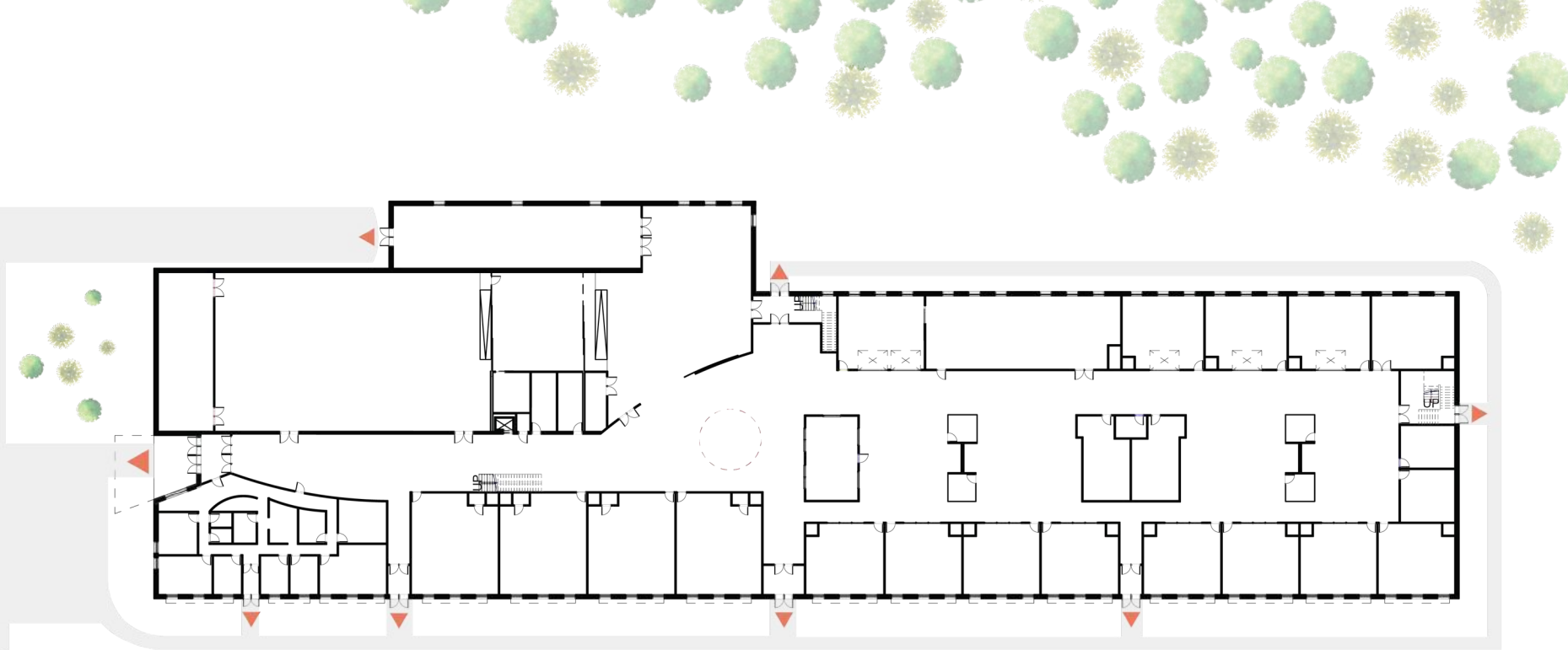


Mary Hogan Design



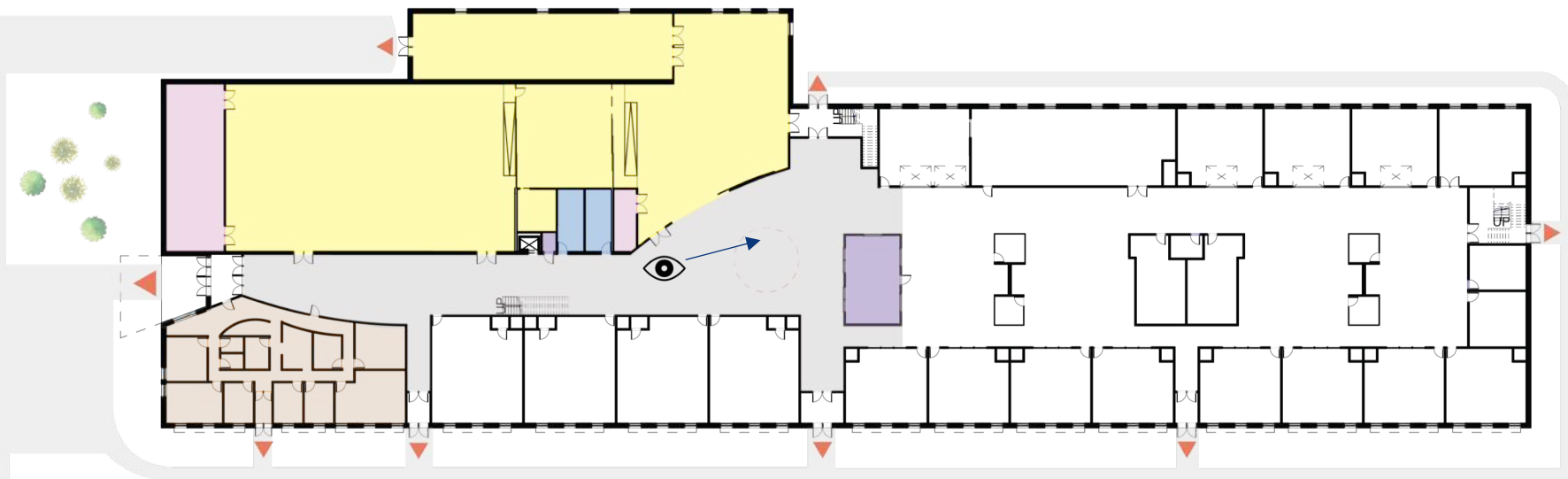
Middlebury Elementary Design

- Shared + Gathering
- Administrative
- Class Spaces





Visible  
Engineering



Program Key

Collaboration Pods/ Main Street

Multipurpose/Active Learning

Mechanical

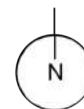
Meeting Rooms

Classrooms

Storage

WC

Administration

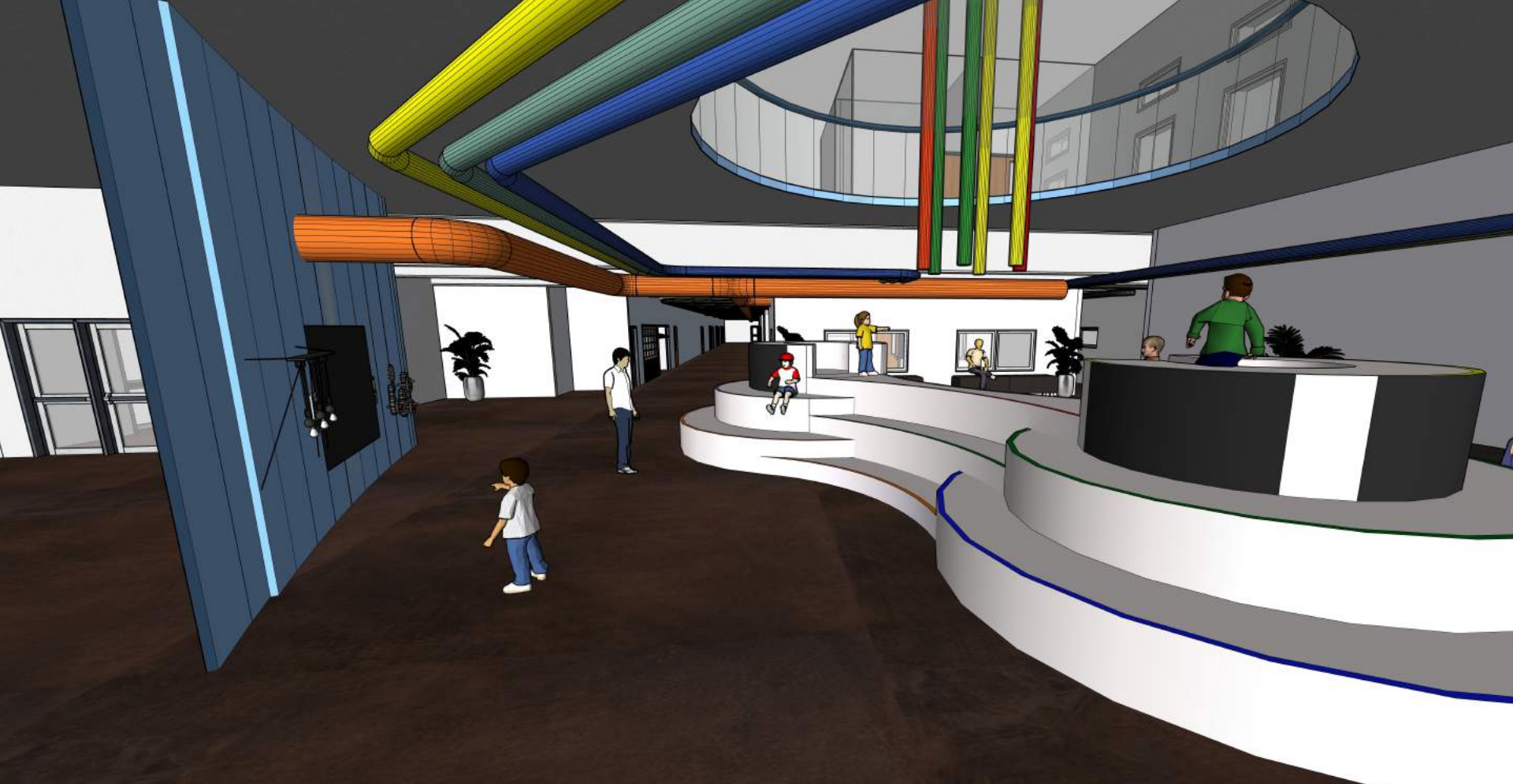


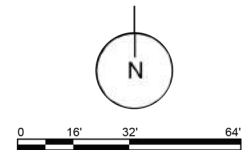
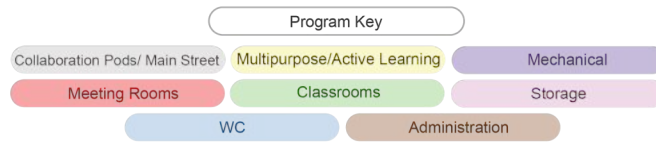
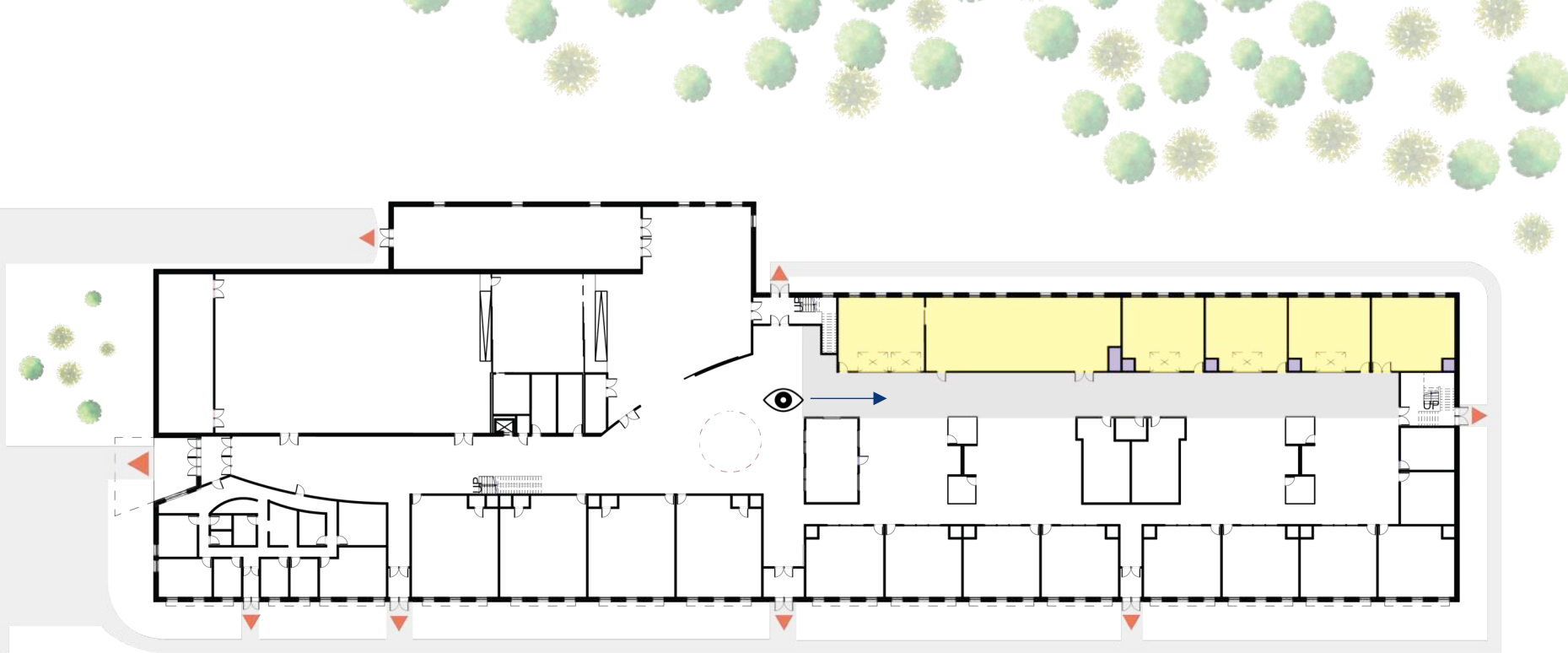
0 16' 32' 64'



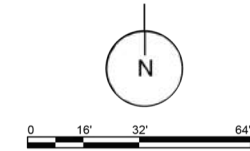
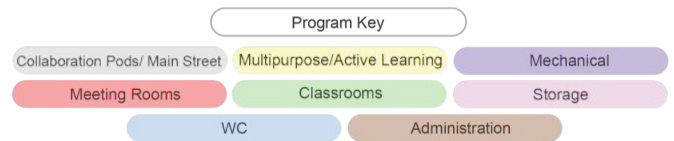
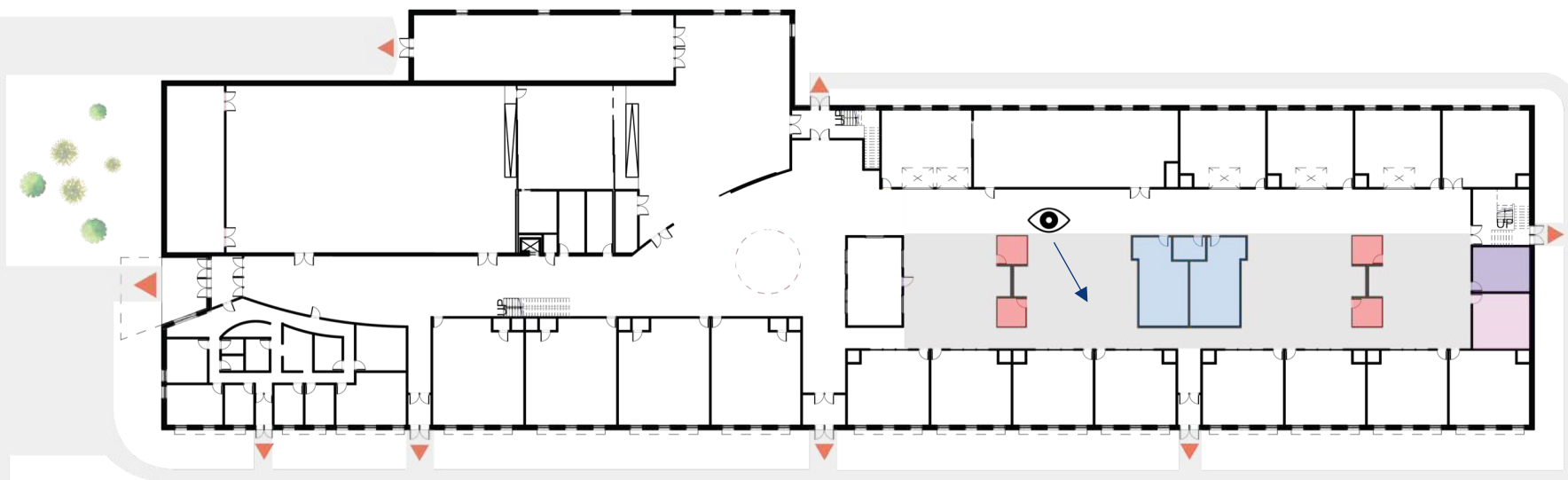
Town Square









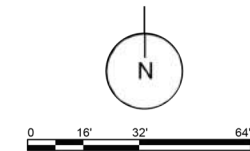
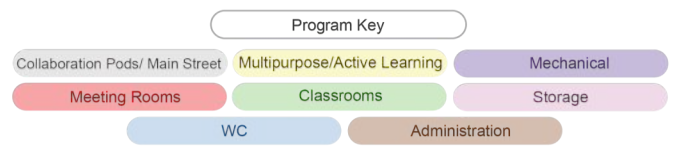






## Collaboration Spaces







# Classrooms





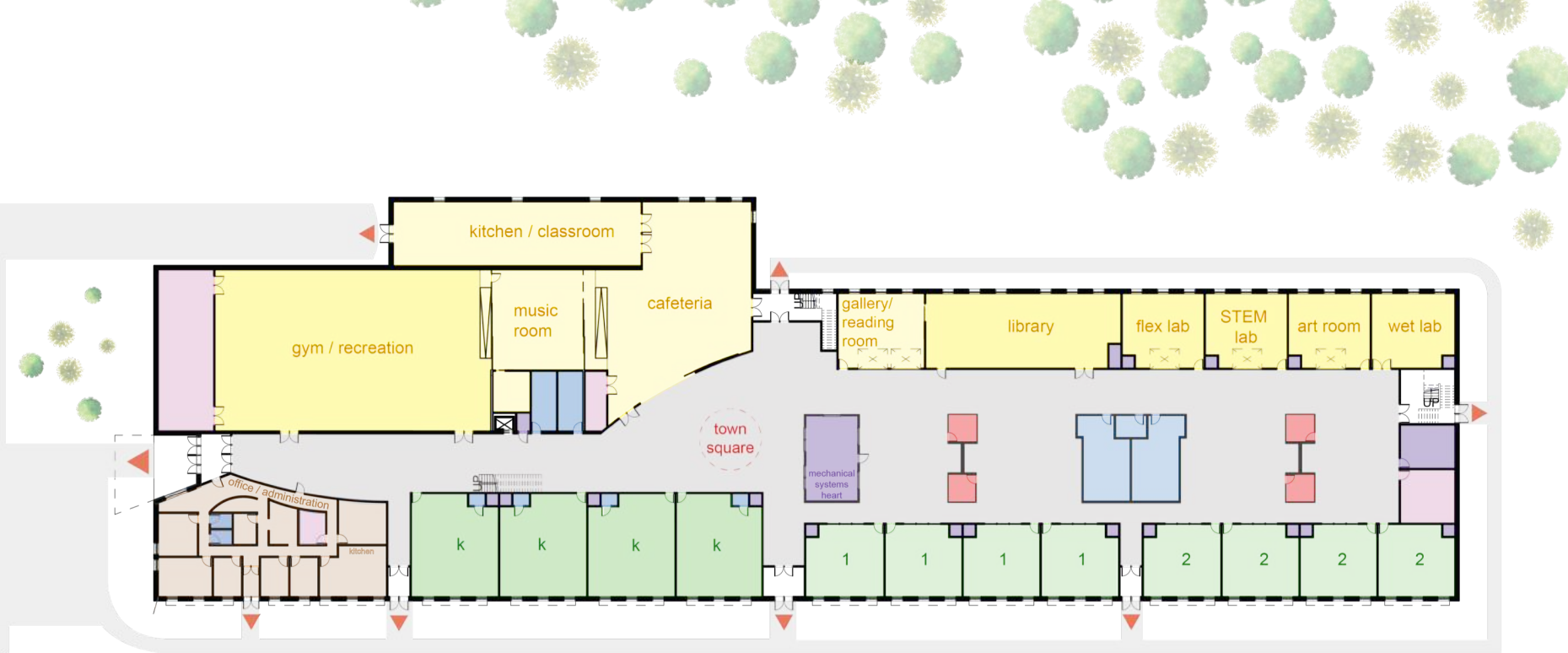
# Classrooms





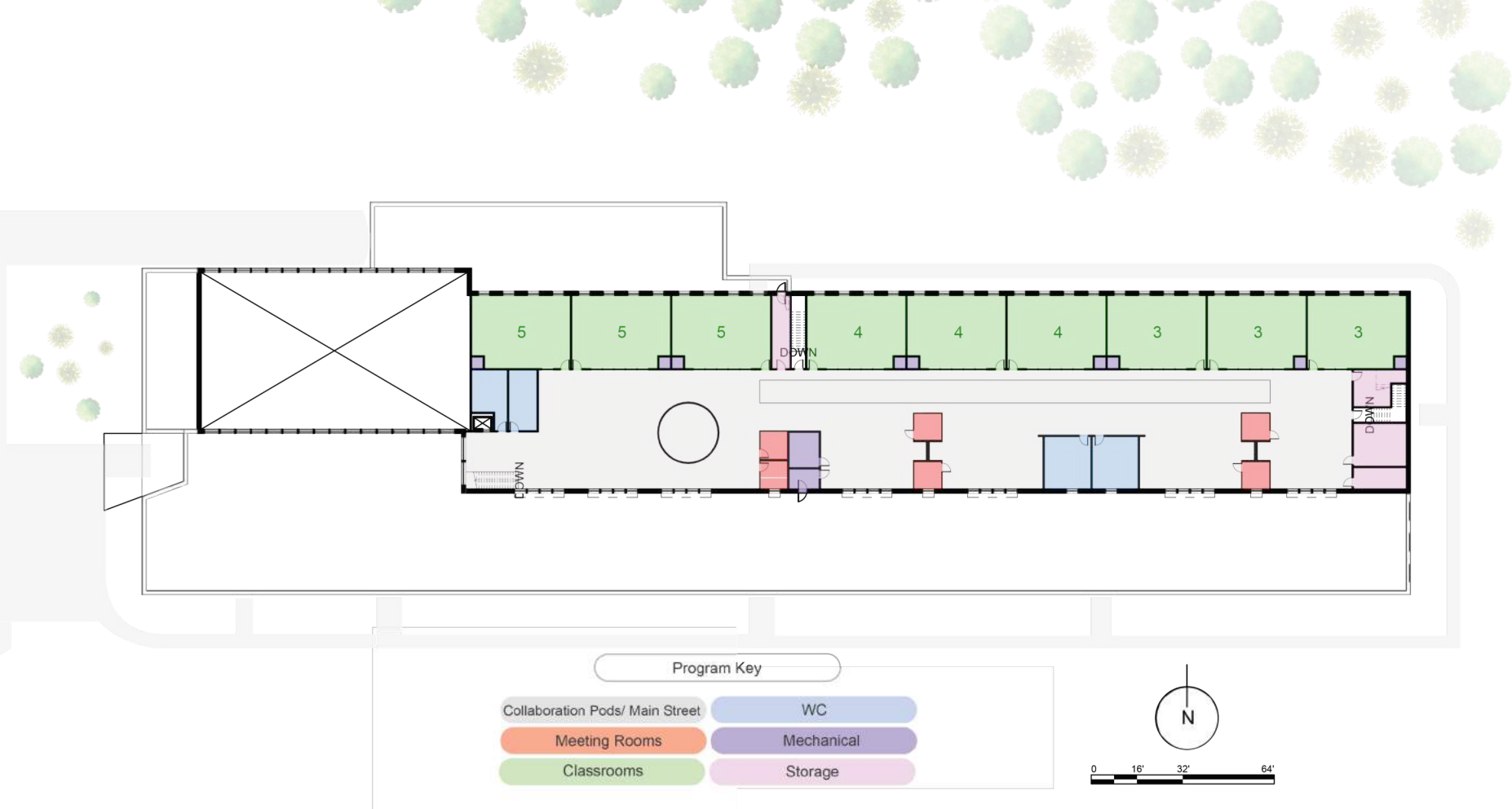
# Classrooms





# First Floor Plan

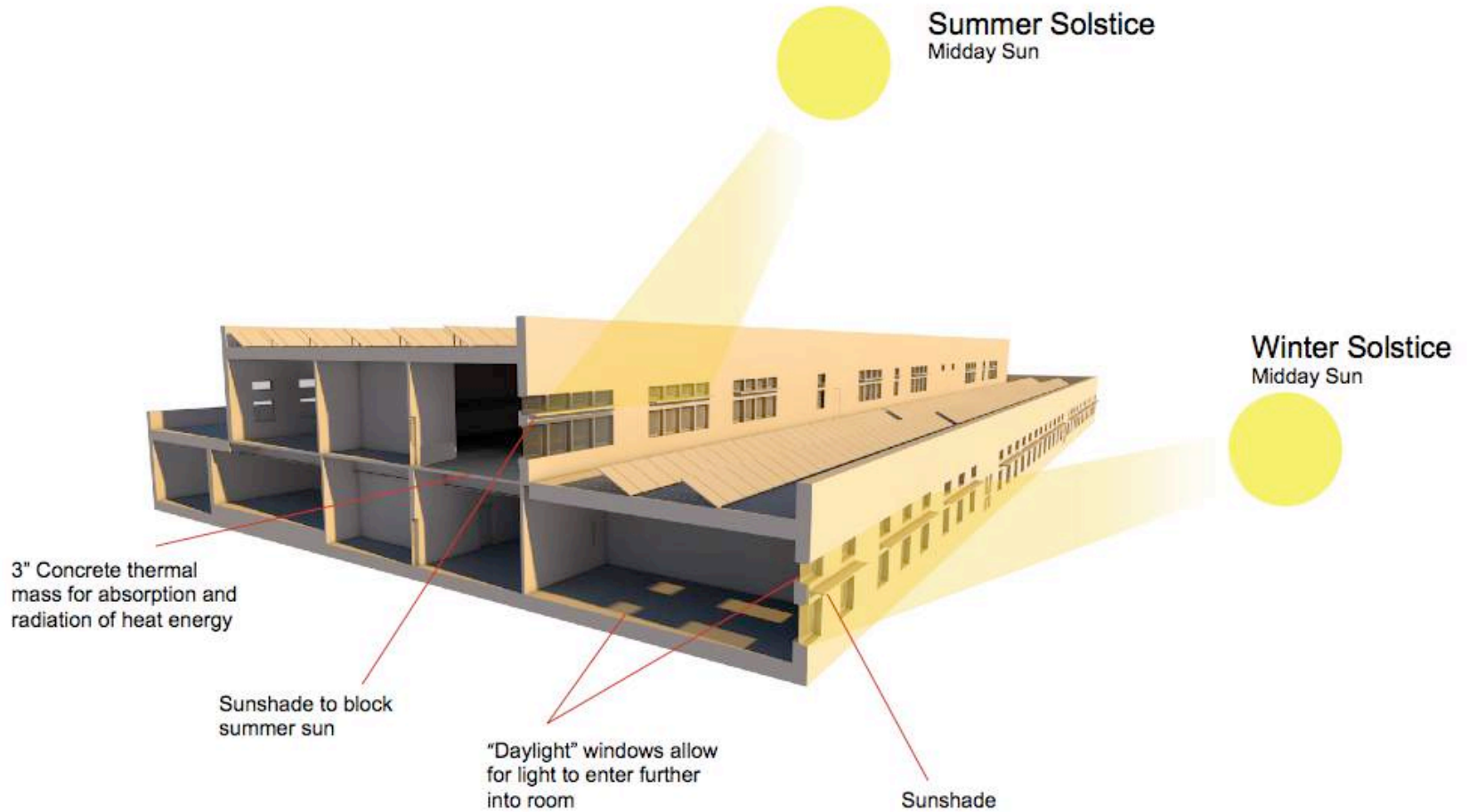


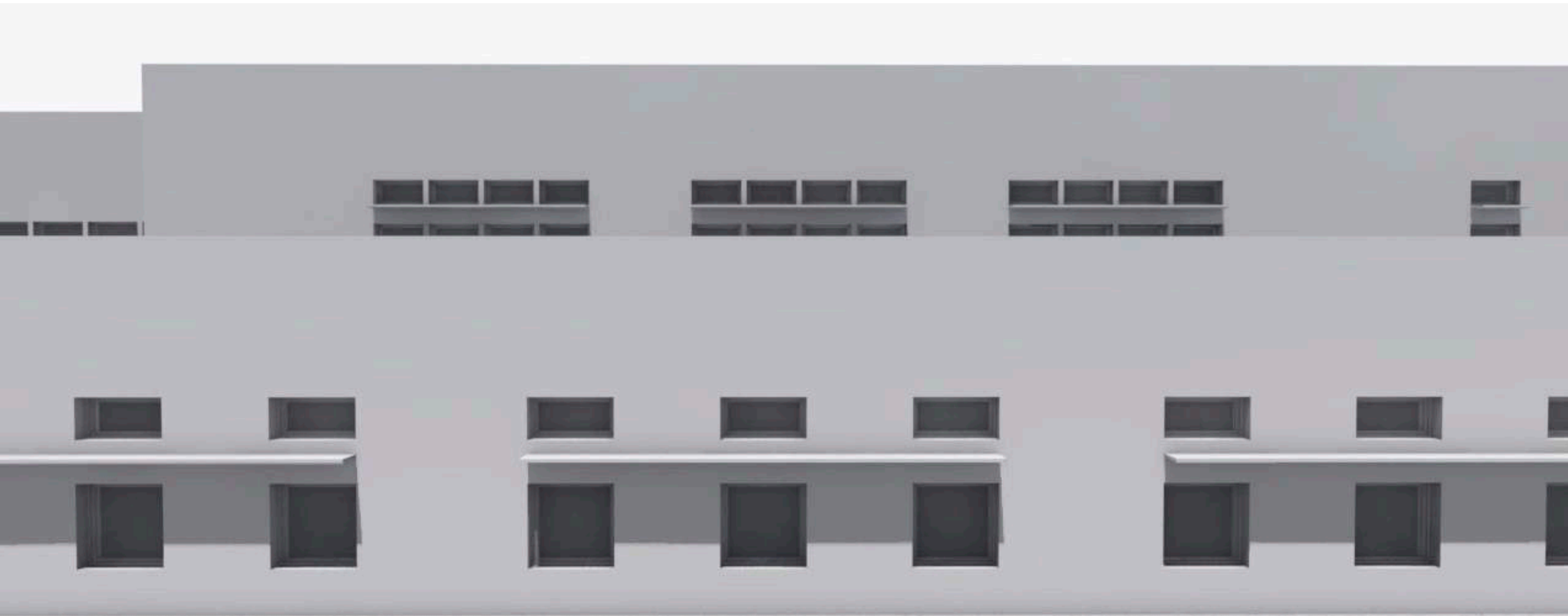




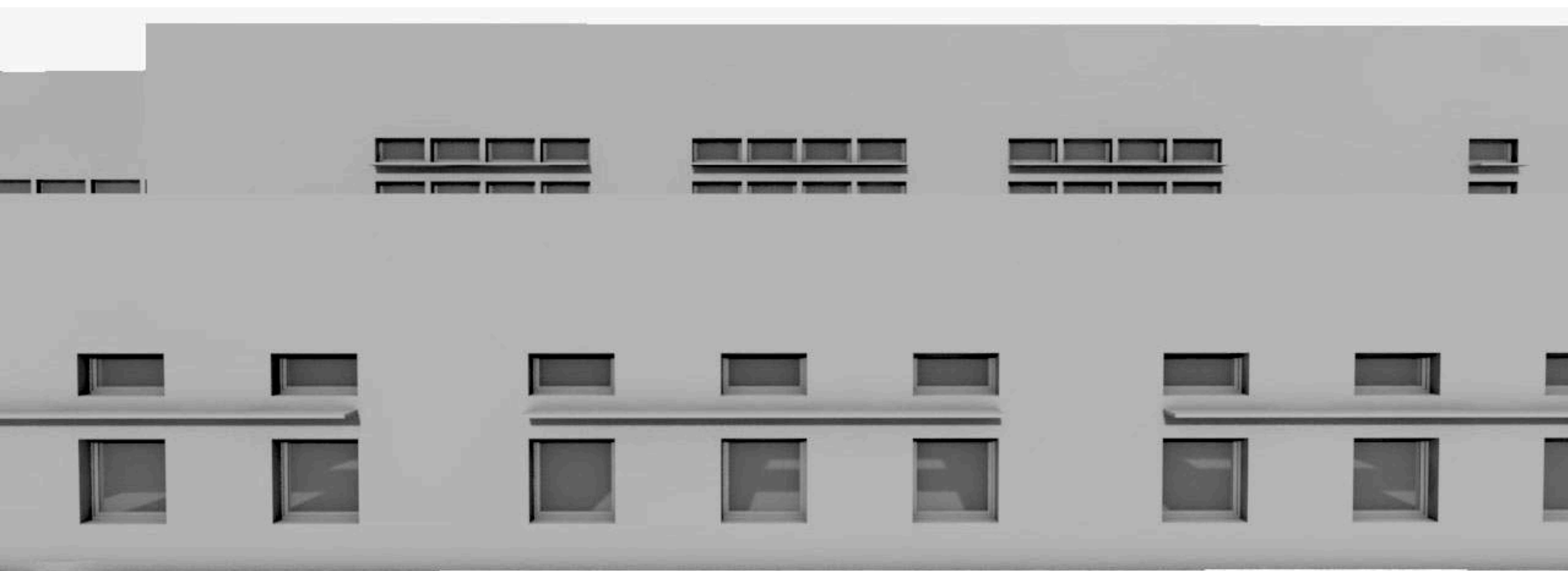
Exterior



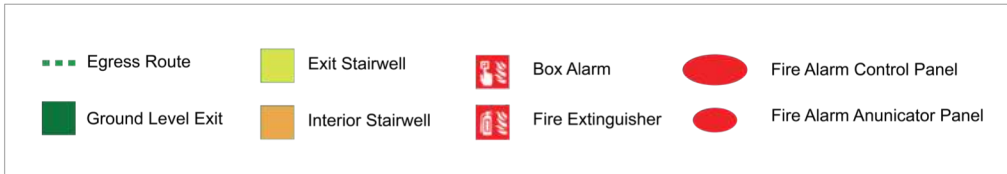
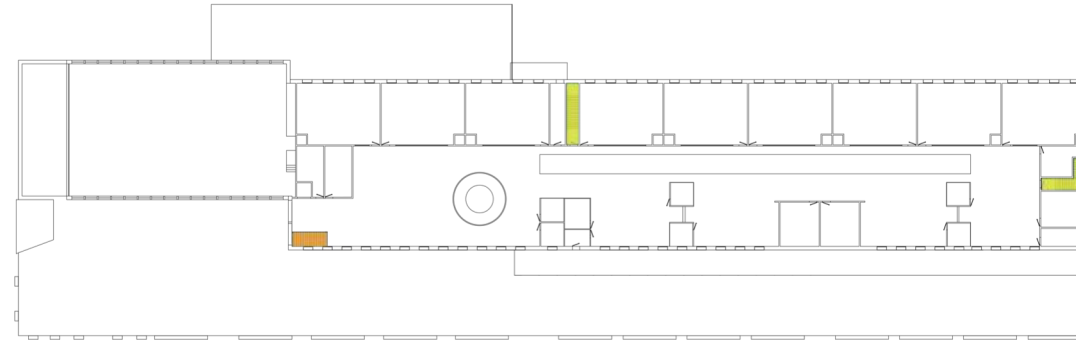
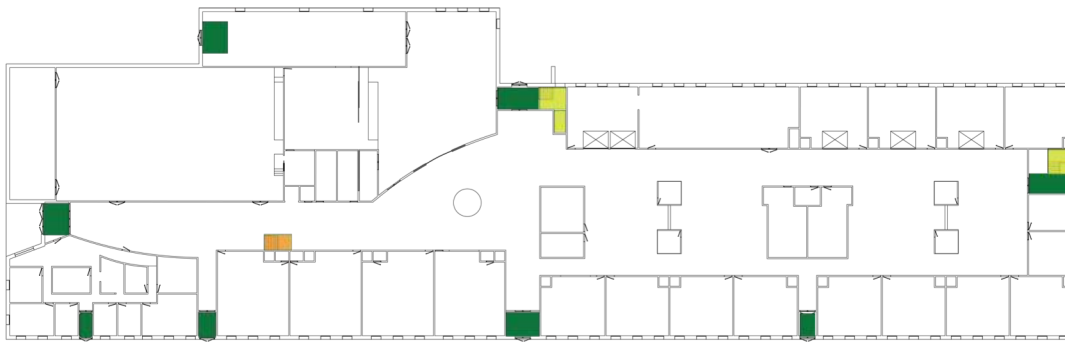




## Summer Solstice Shading



## Winter Solstice Shading



NFPA 101

National Electrical Code

Uniform Plumbing Code

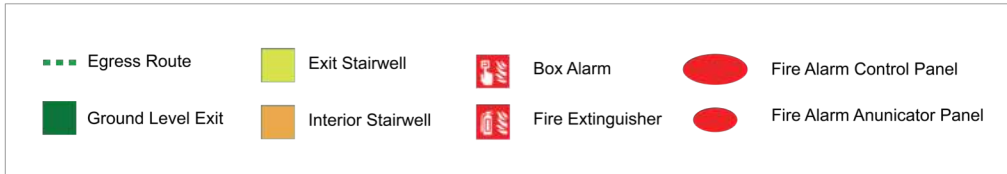
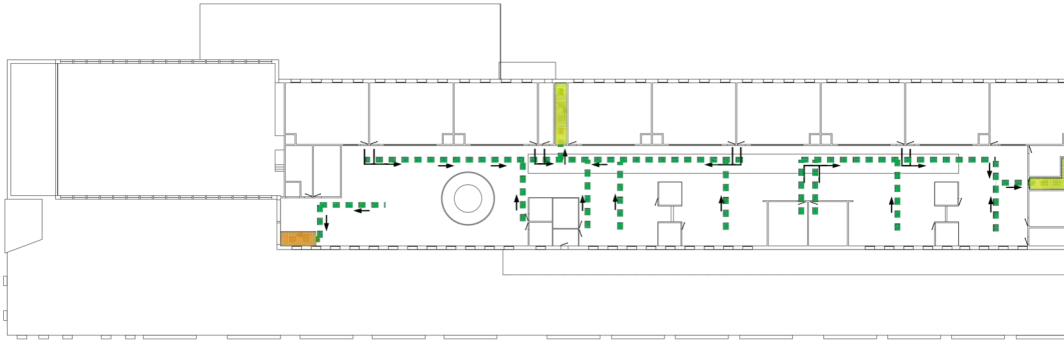
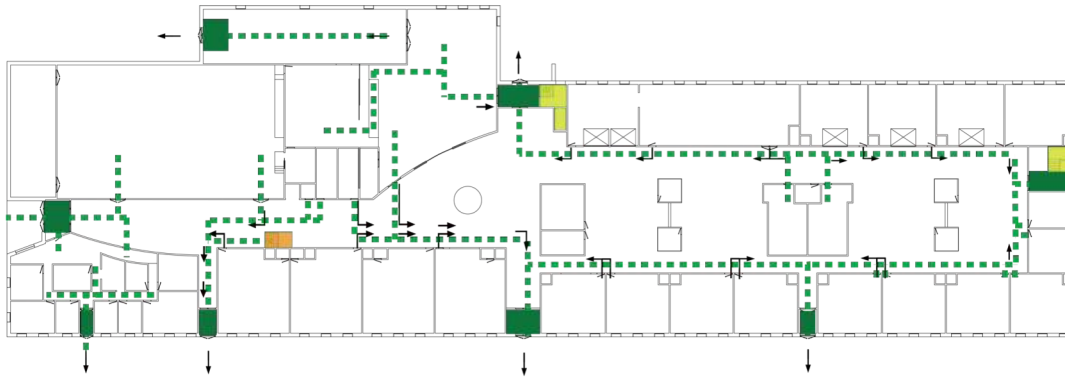
International Building Code

Vermont Accessibility Codes

ADA Compliant



Resilient  
Design



NFPA 101

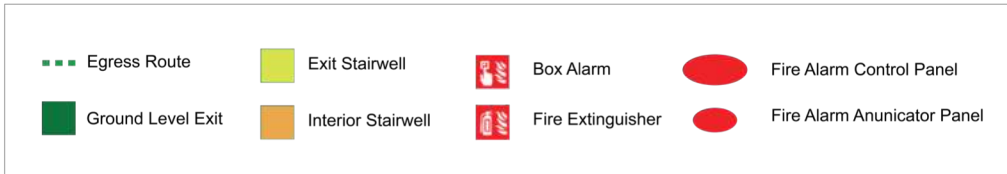
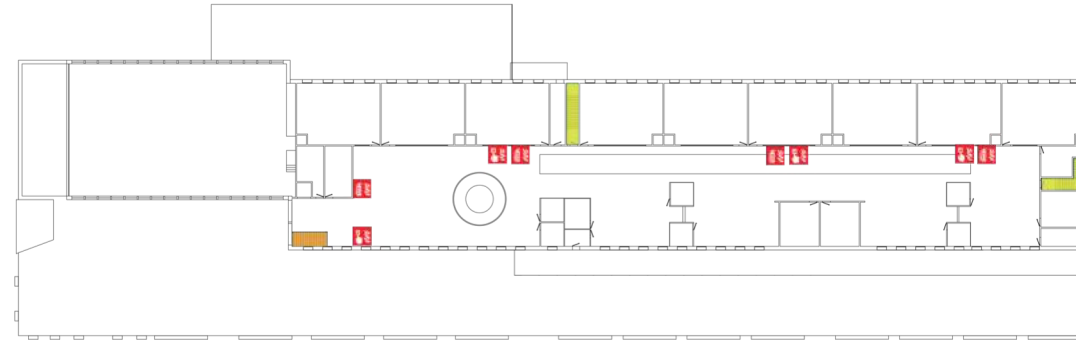
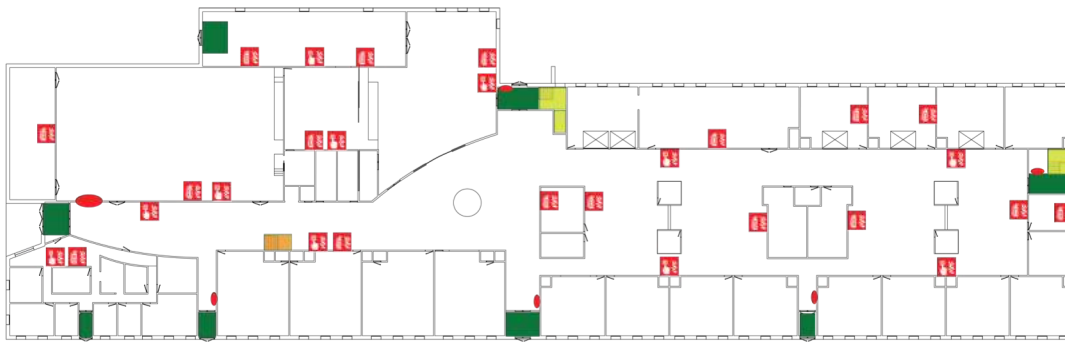
National Electrical Code

Uniform Plumbing Code

International Building Code

Vermont Accessibility Codes

ADA Compliant



NFPA 101

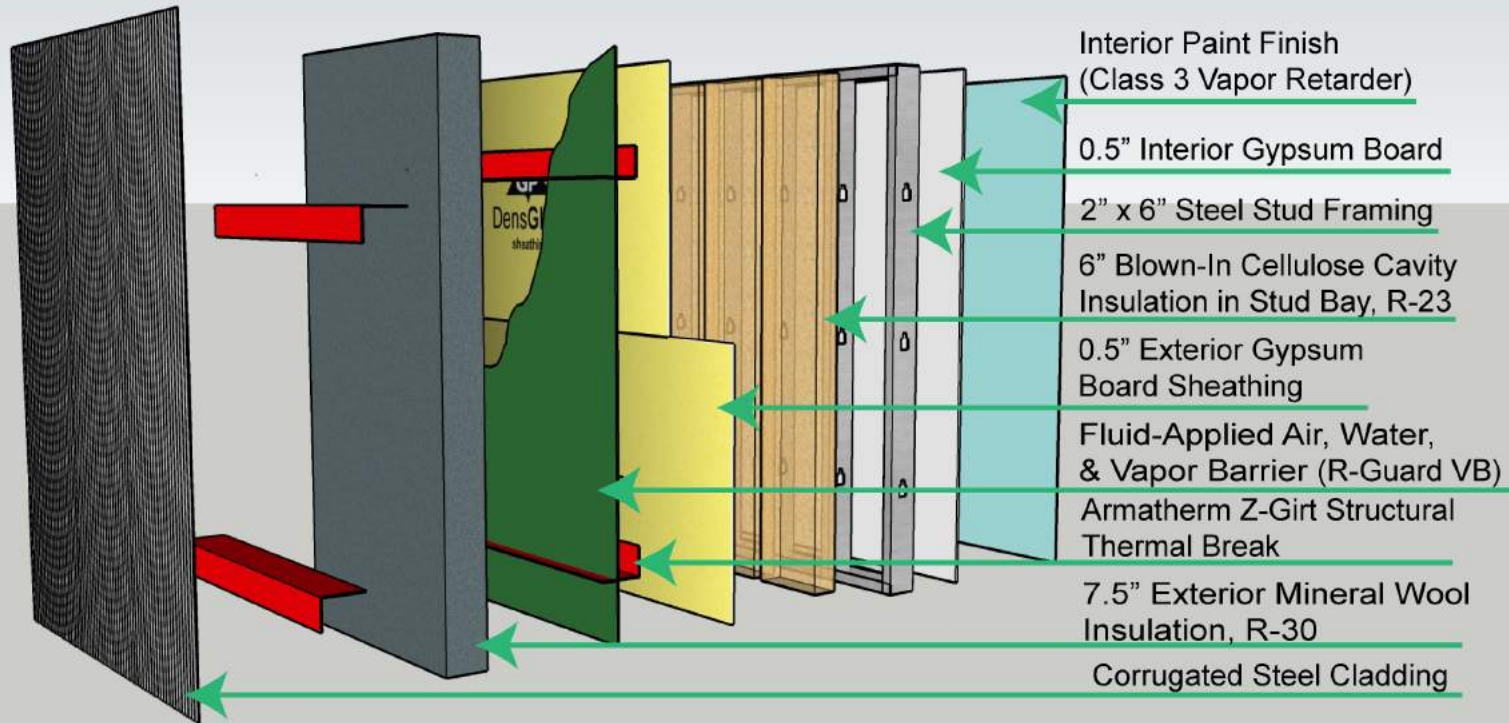
National Electrical Code

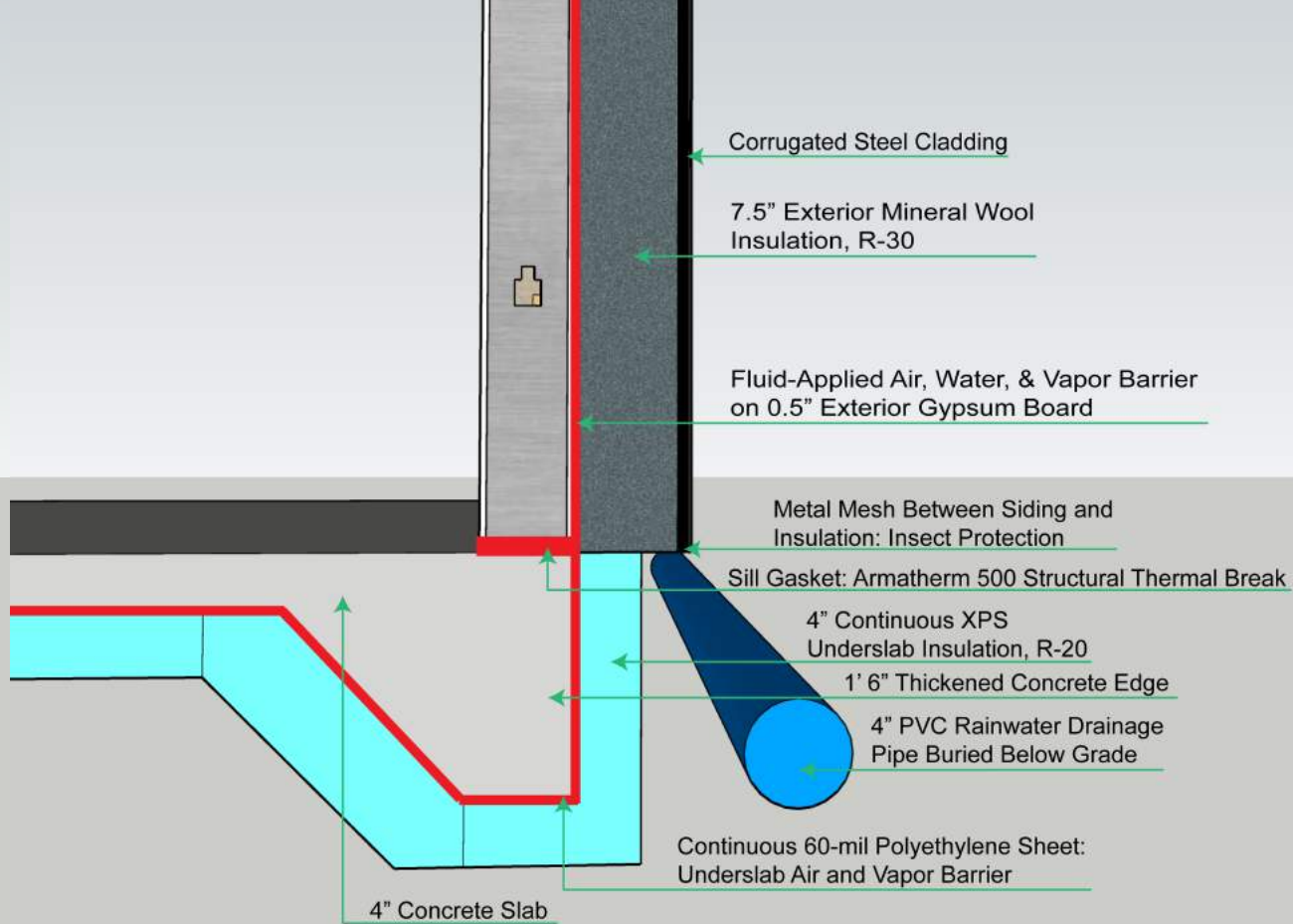
Uniform Plumbing Code

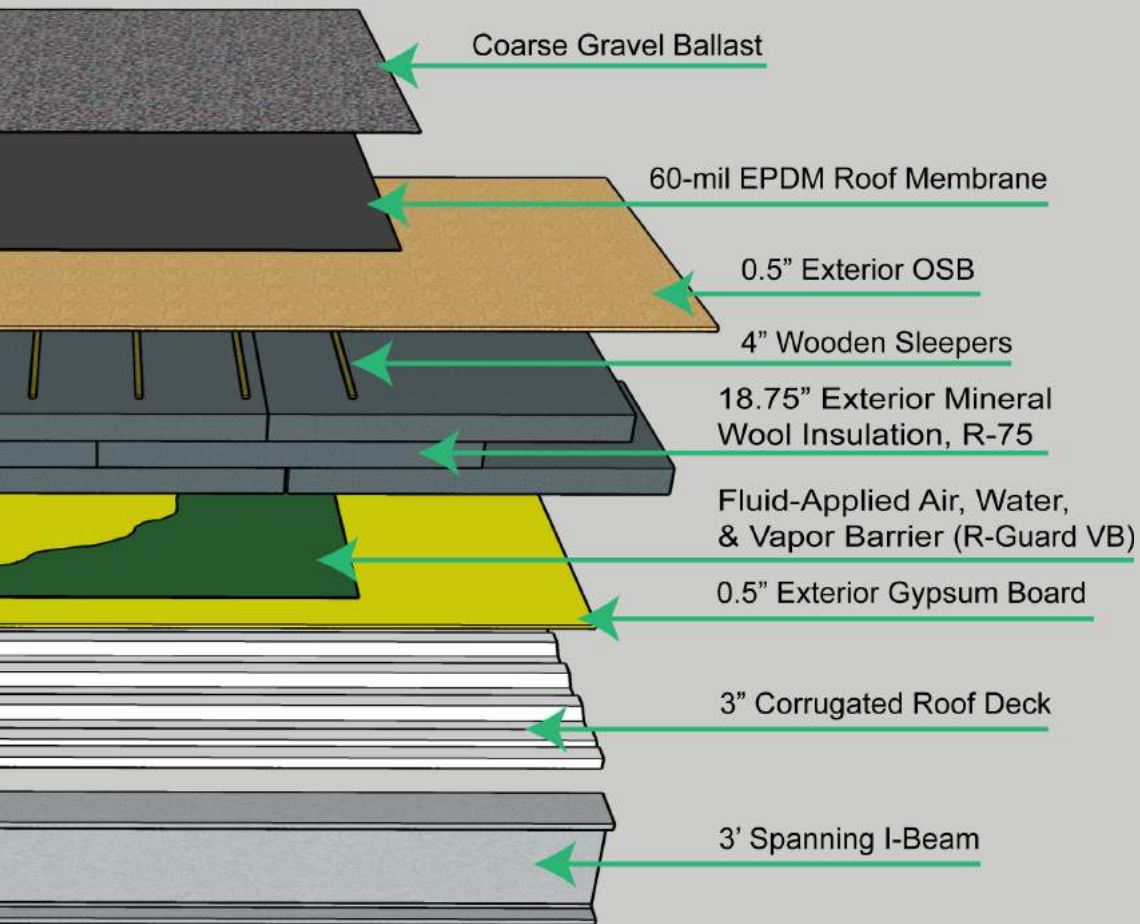
International Building Code

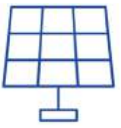
Vermont Accessibility Codes

ADA Compliant

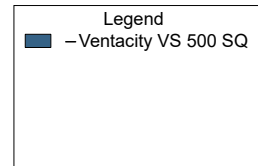
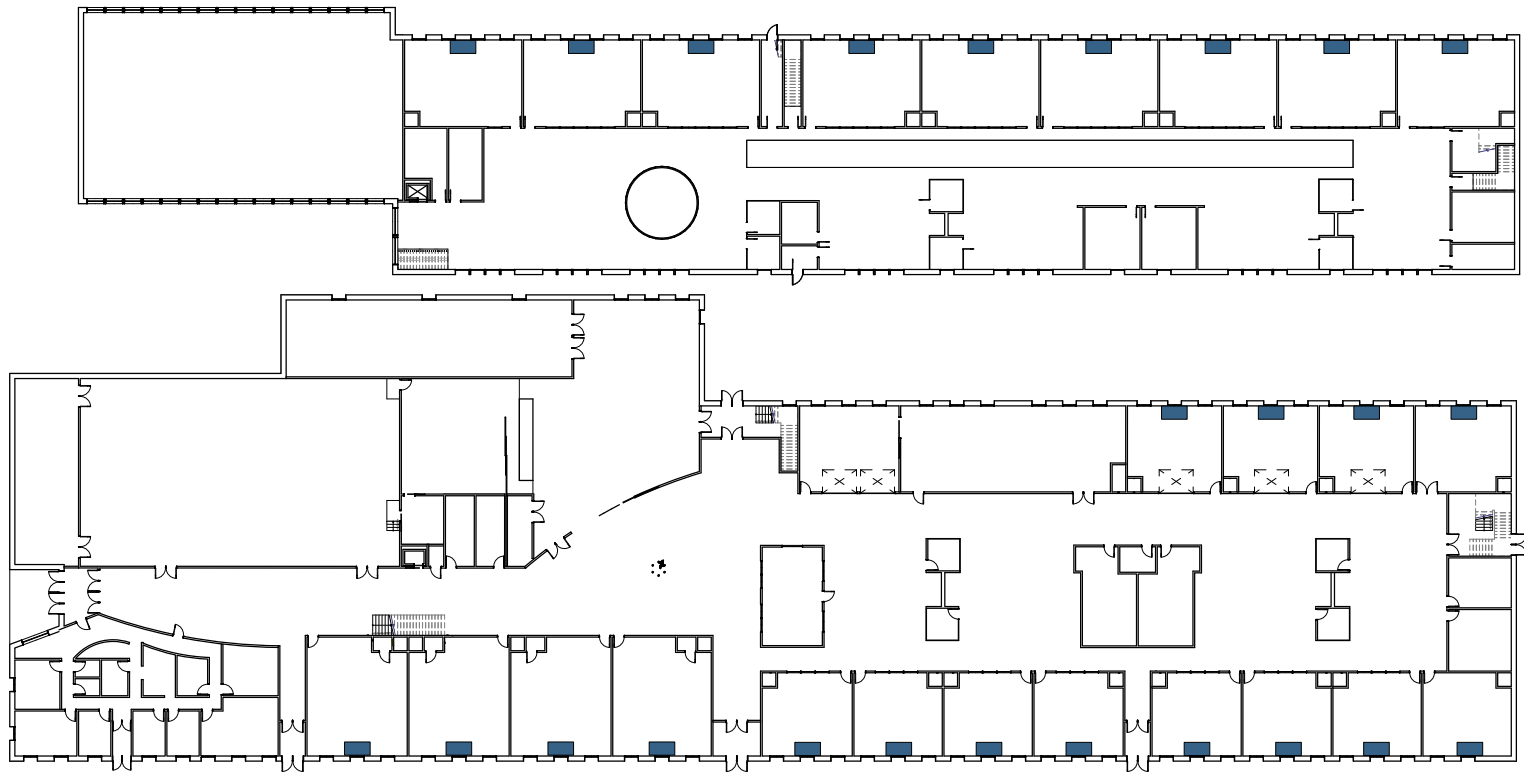


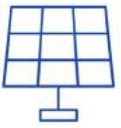






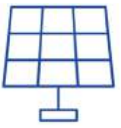
Visible  
Engineering



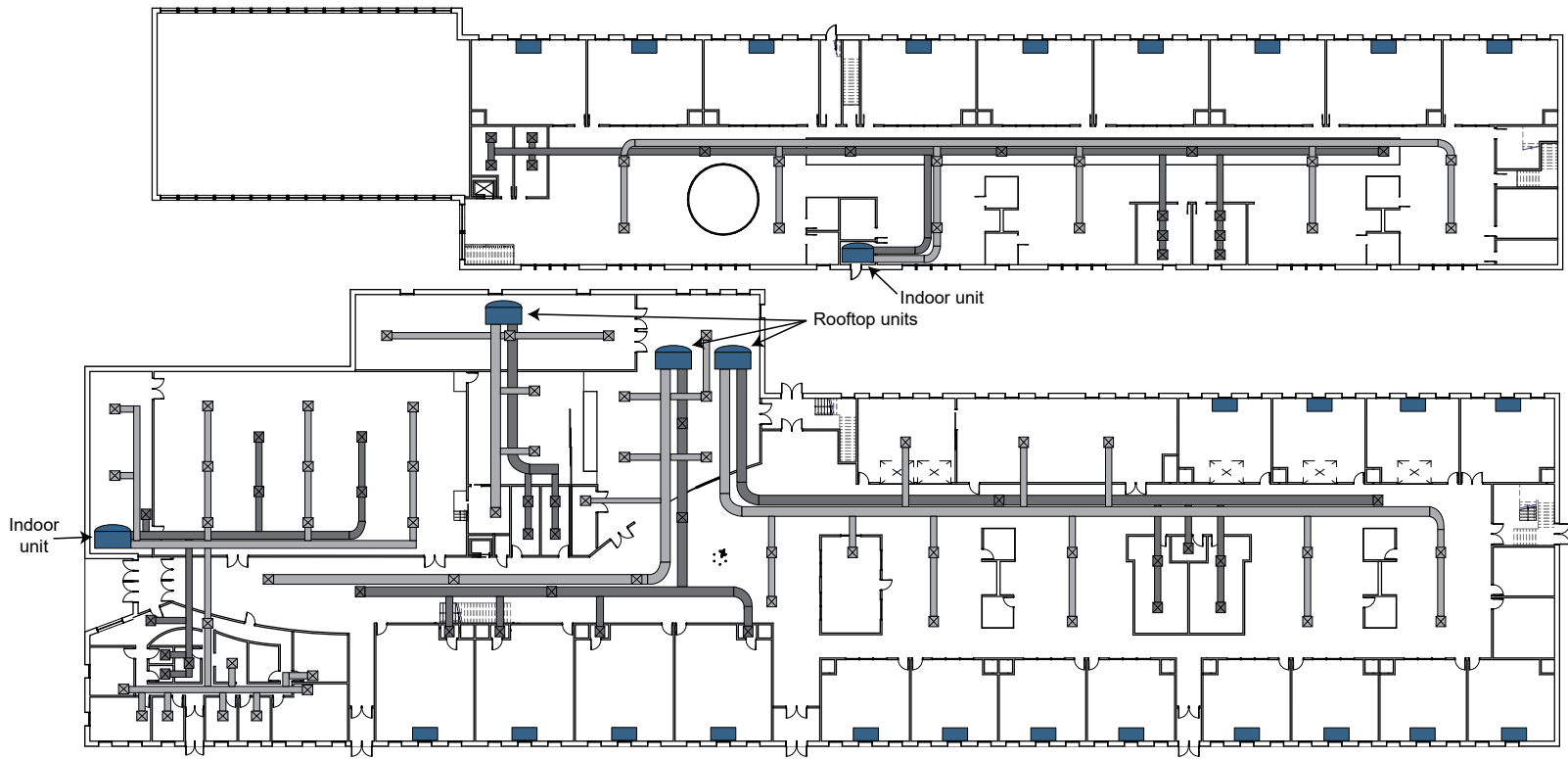


Visible  
Engineering





Visible  
Engineering



| Legend |                        |
|--------|------------------------|
|        | - Ventacity VS 500 SQ  |
|        | - Ventacity VS 3000 RT |
|        | - Supply Ductwork      |
|        | - Return Ductwork      |
|        | - Supply Vent          |
|        | - Return Vent          |



Resilient  
Design





Resilient  
Design



Heat Pump Types

- ClimateMaster TZ024
- ClimateMaster TE049
- ClimateMaster TE064

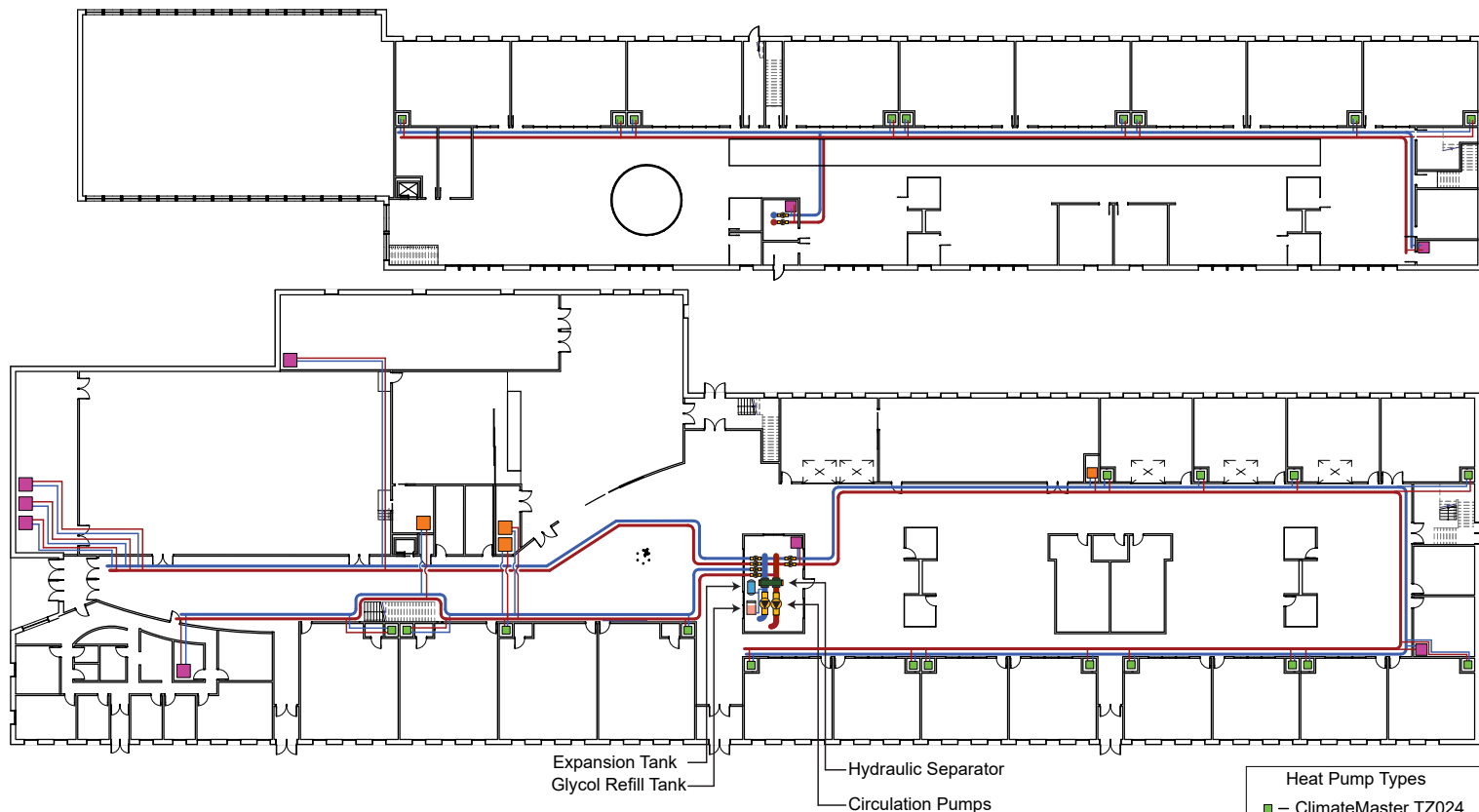


# Heating and Cooling





Resilient  
Design



- Heat Pump Types
- ClimateMaster TZ024
  - ClimateMaster TE049
  - ClimateMaster TE064

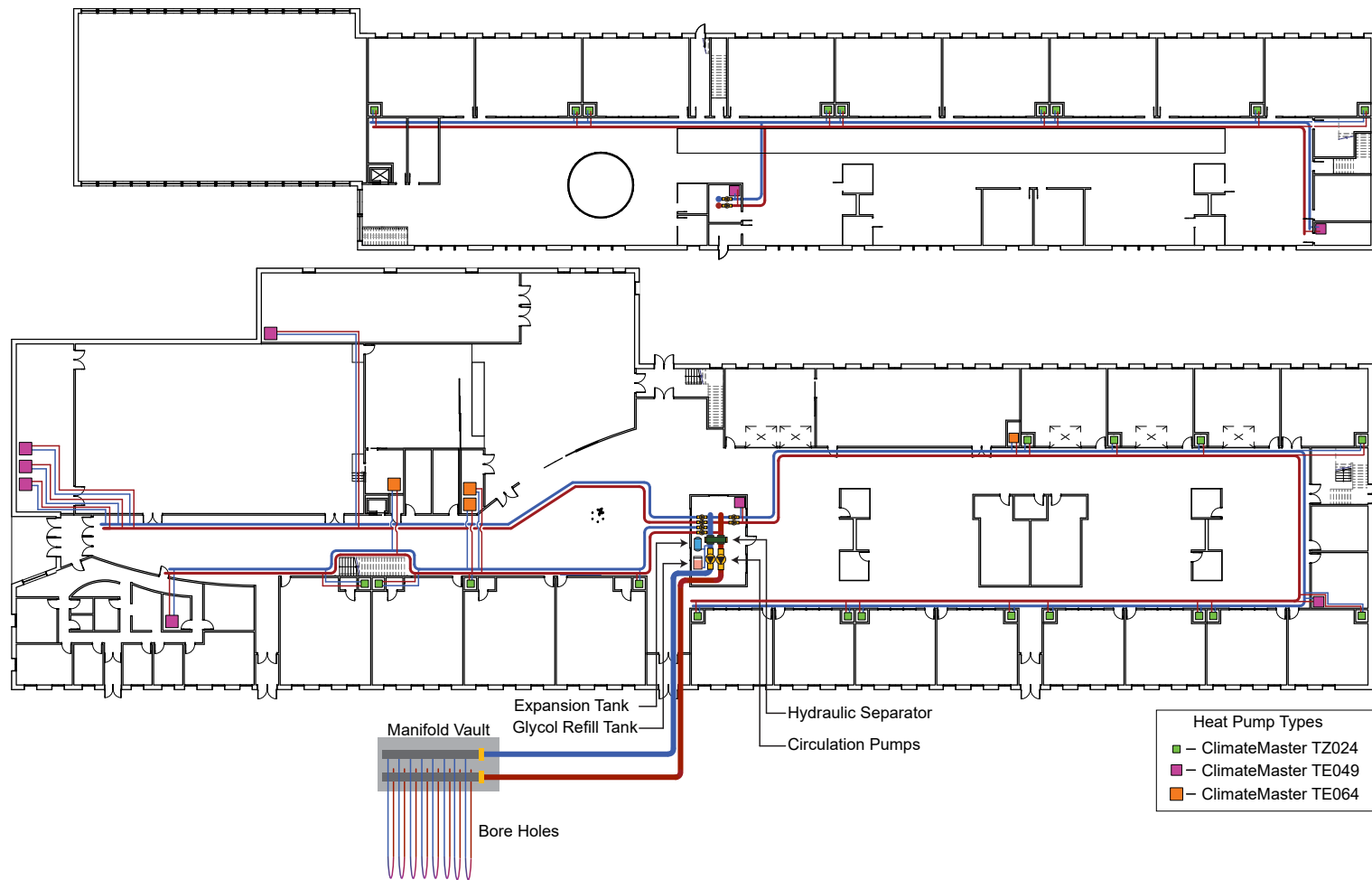


# Heating and Cooling





Resilient  
Design

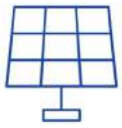
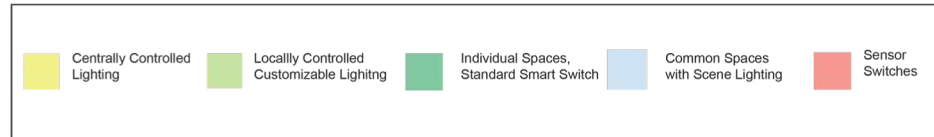
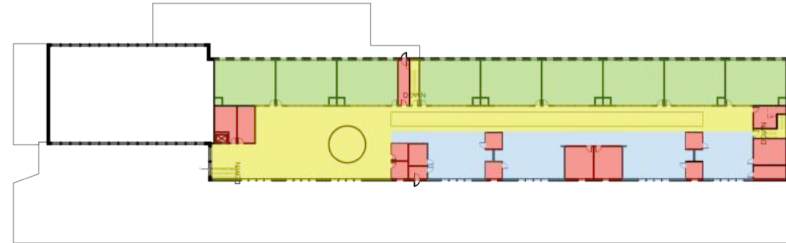


# Heating and Cooling



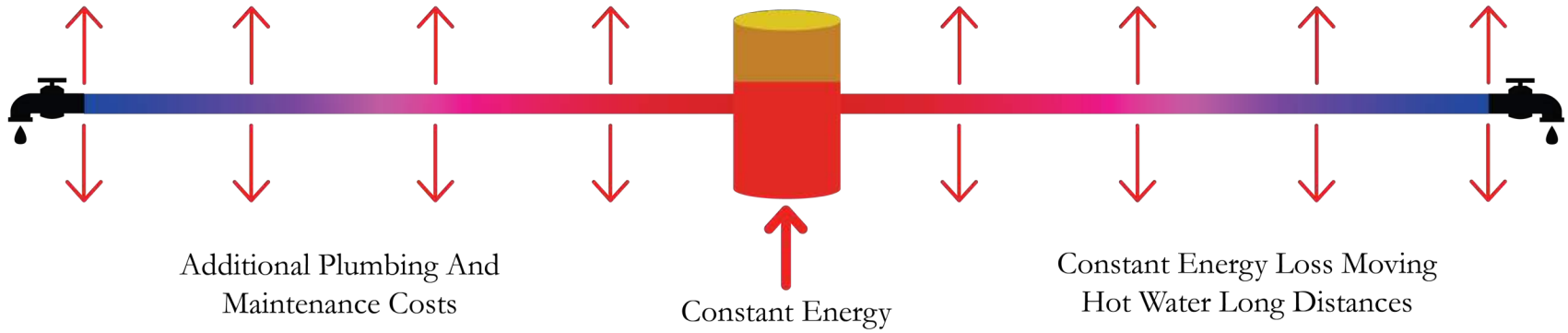
# Reduce Electrical Loads

- Thoughtful Daylighting
- Efficient Light Fixtures
- An Intelligent Control System
- Centralized Appliances

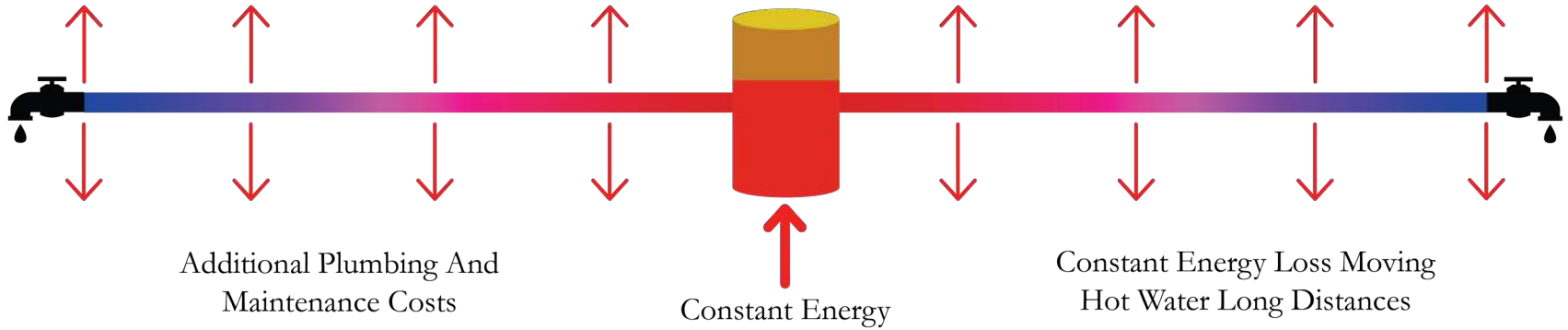


Visible Engineering

## Traditional Tank Based Hot Water



## Traditional Tank Based Hot Water



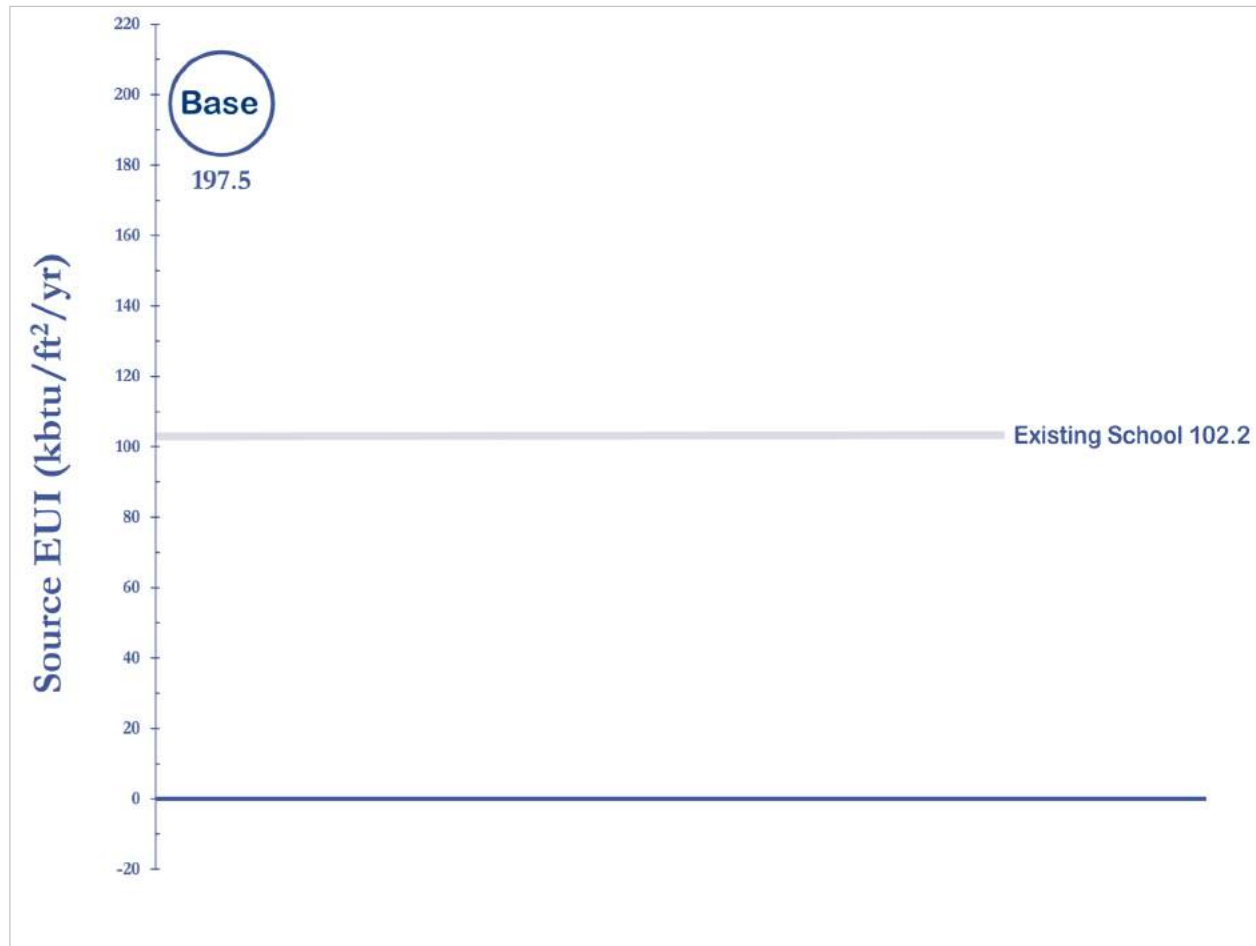
## Decentralized Point Source Hot Water

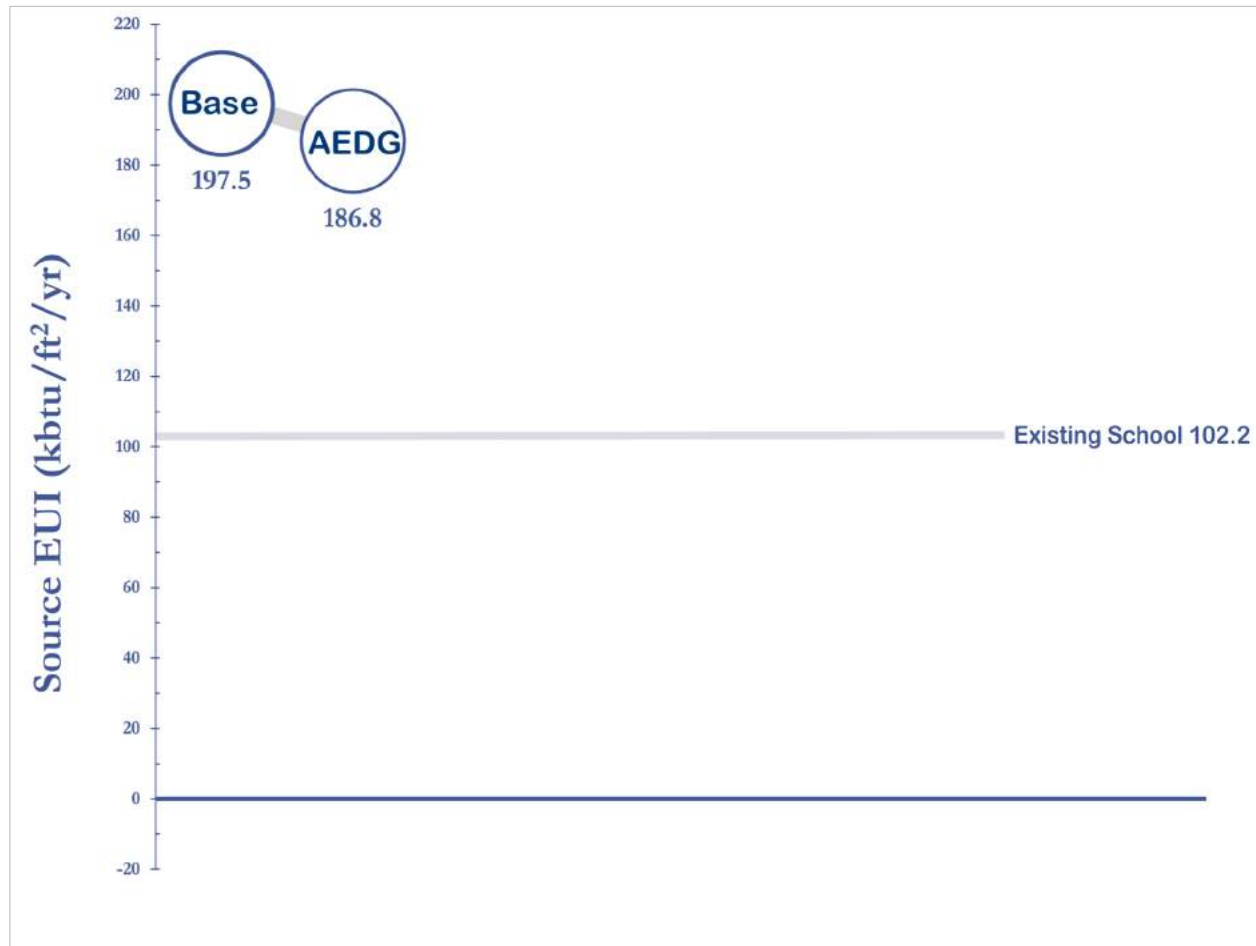
Demand Based Energy Use

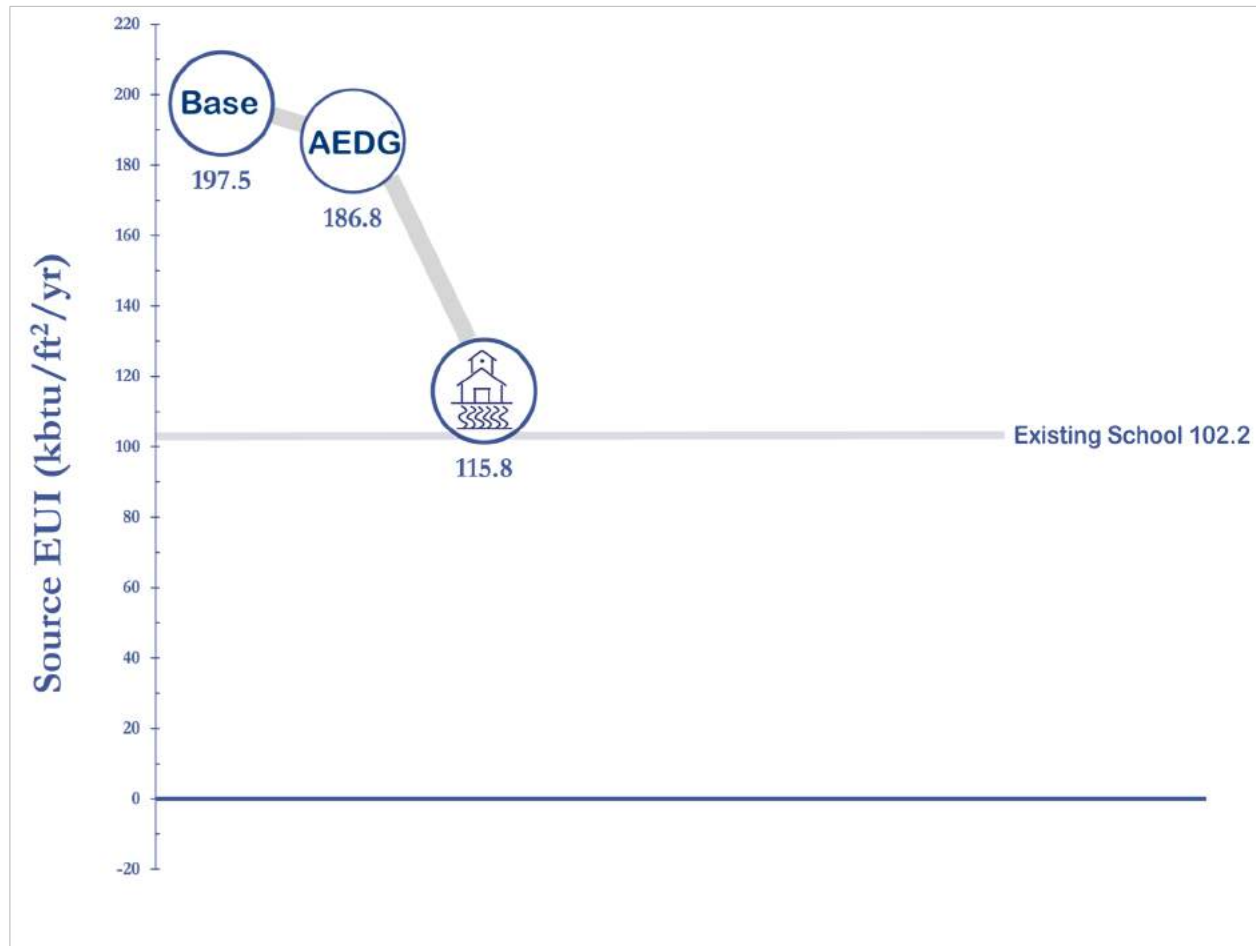
Minimal Energy Loss In Hot Water Delivery

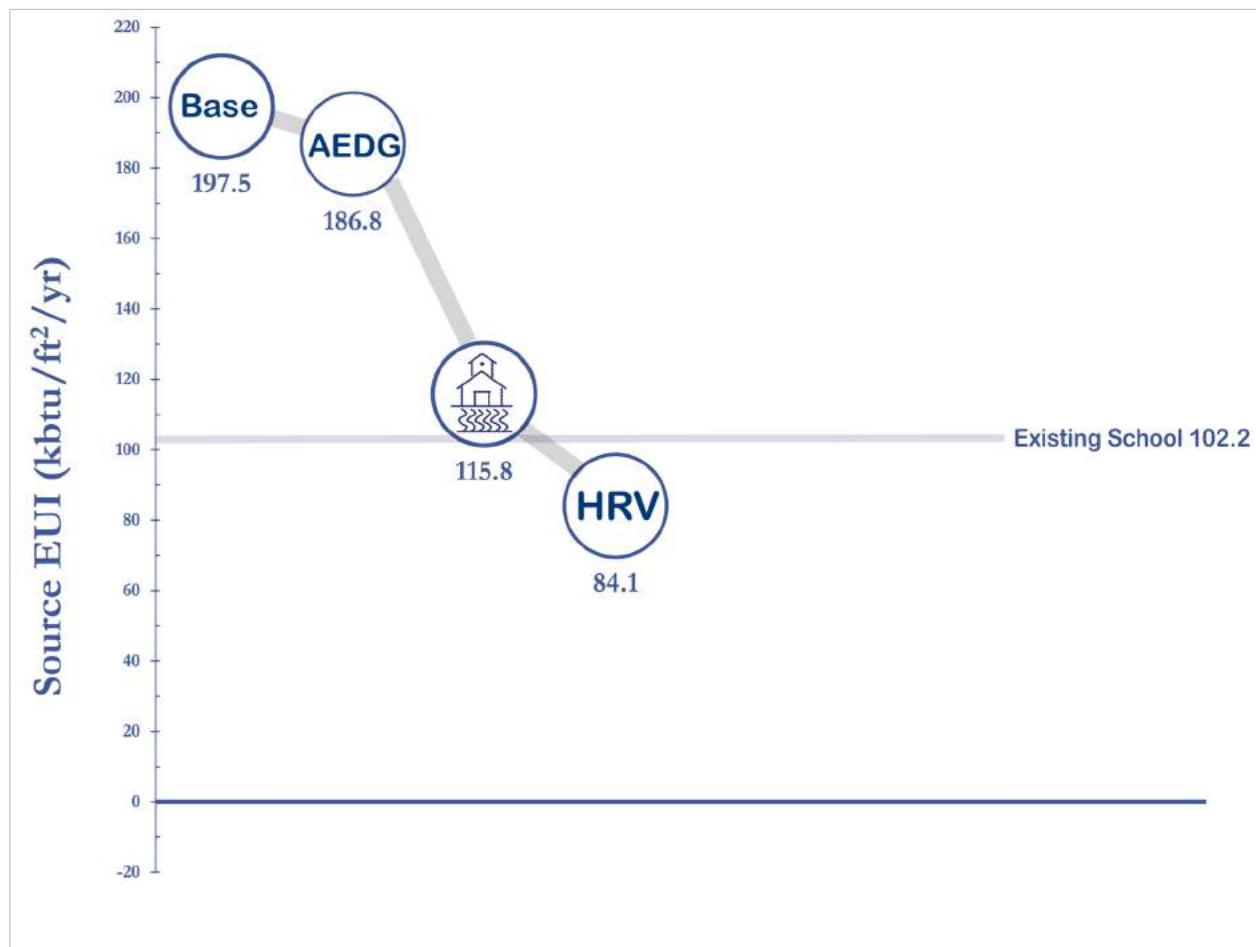
Longer Lifespan

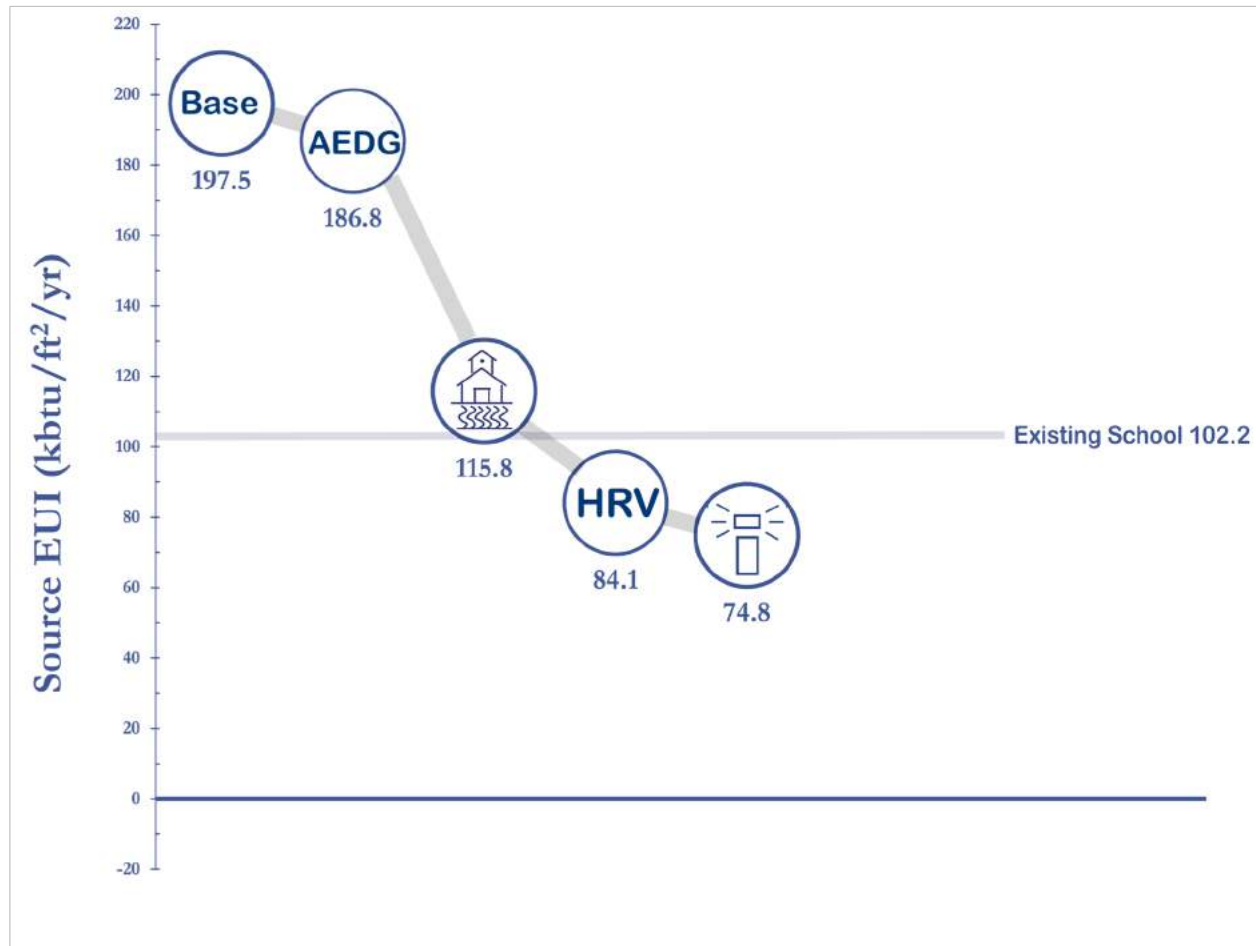






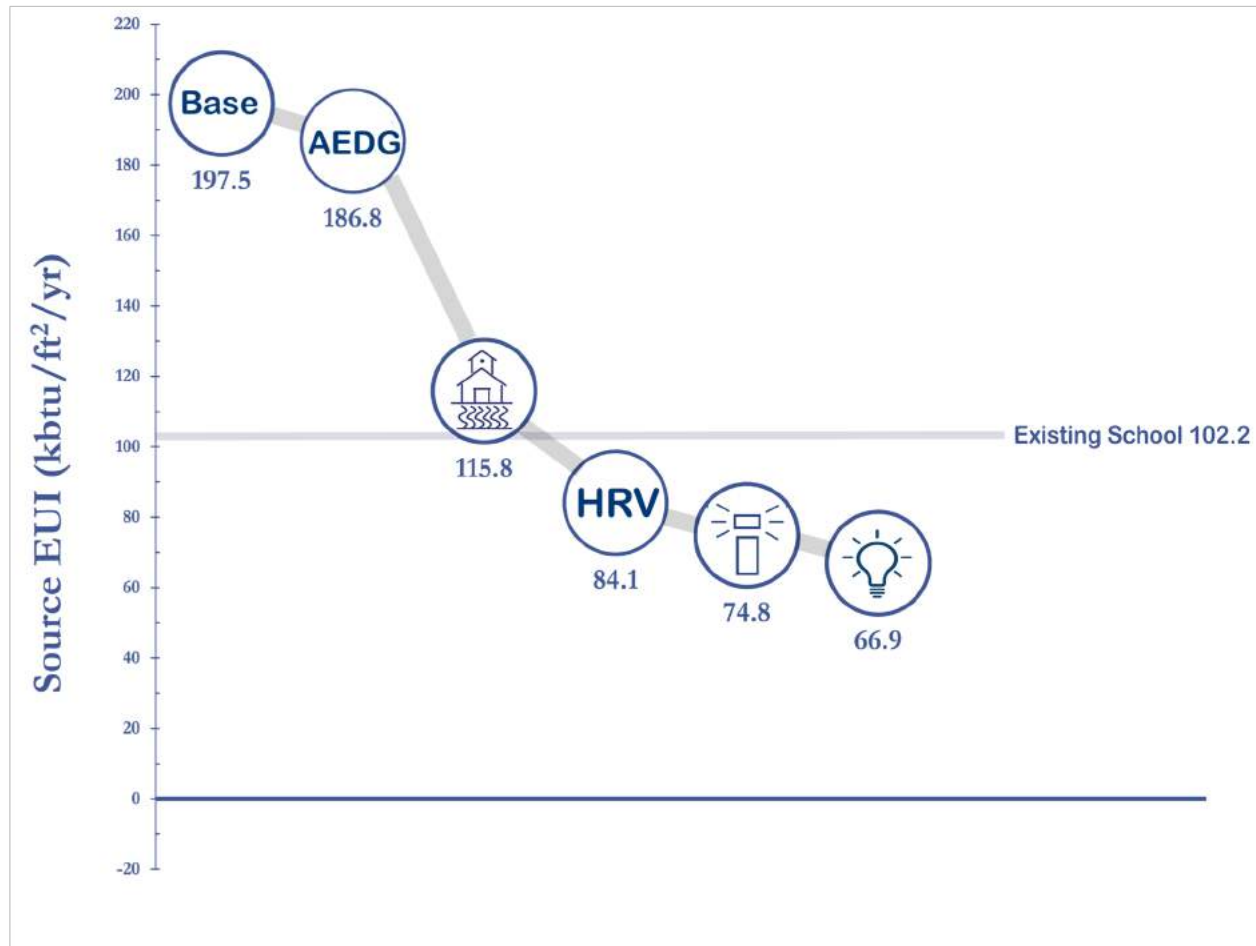


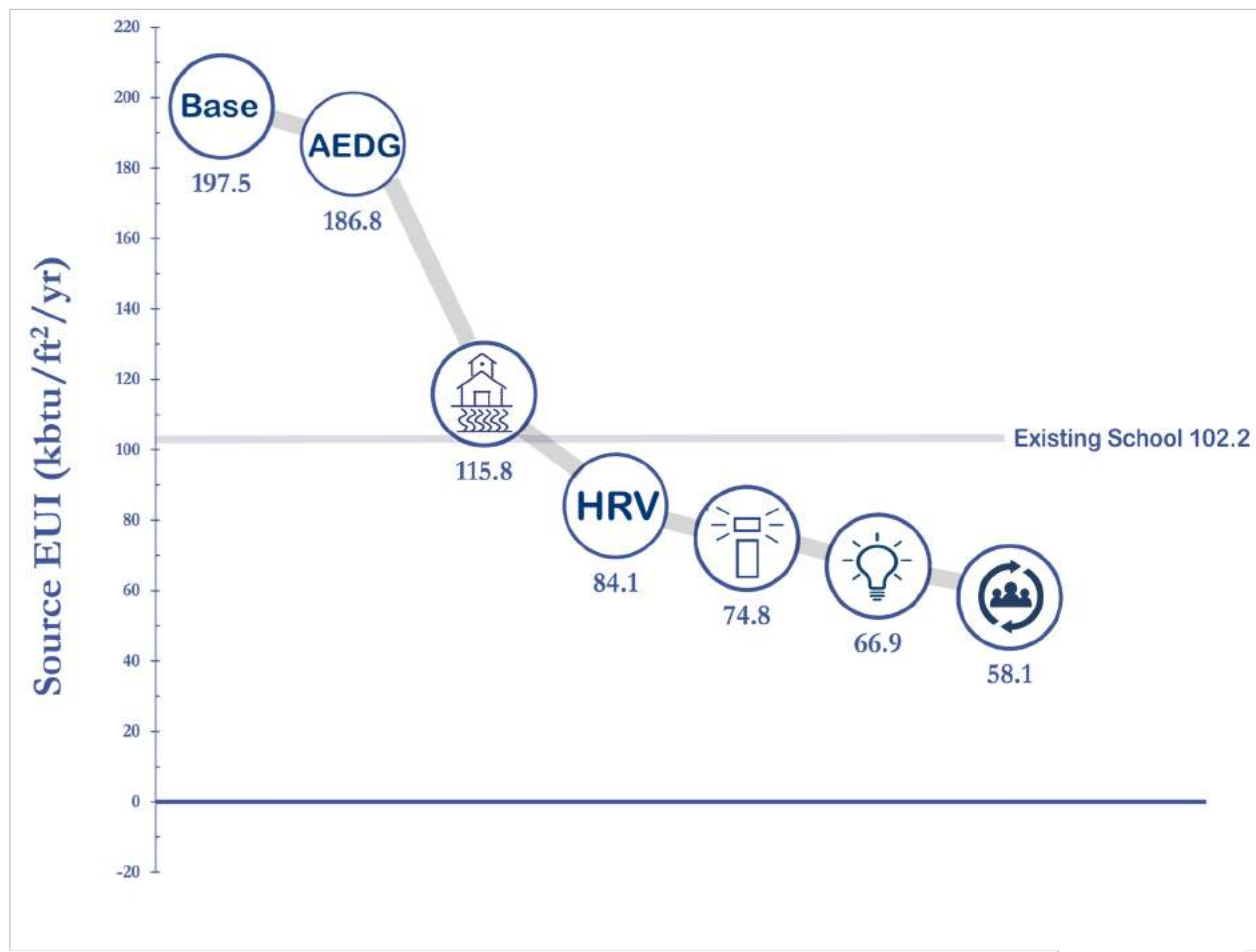




## Energy Efficiency Measures

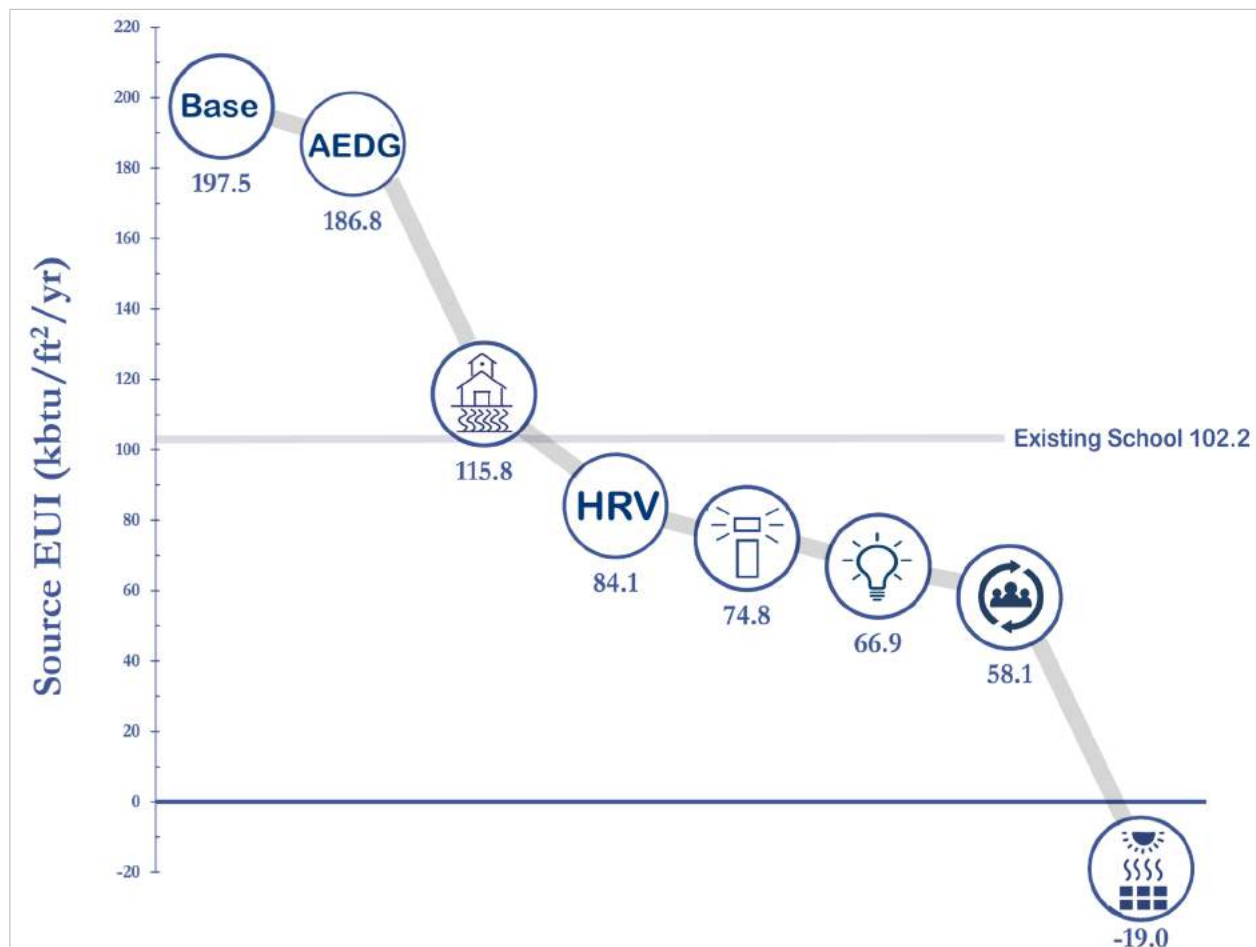






## Energy Efficiency Measures





## Energy Efficiency Measures





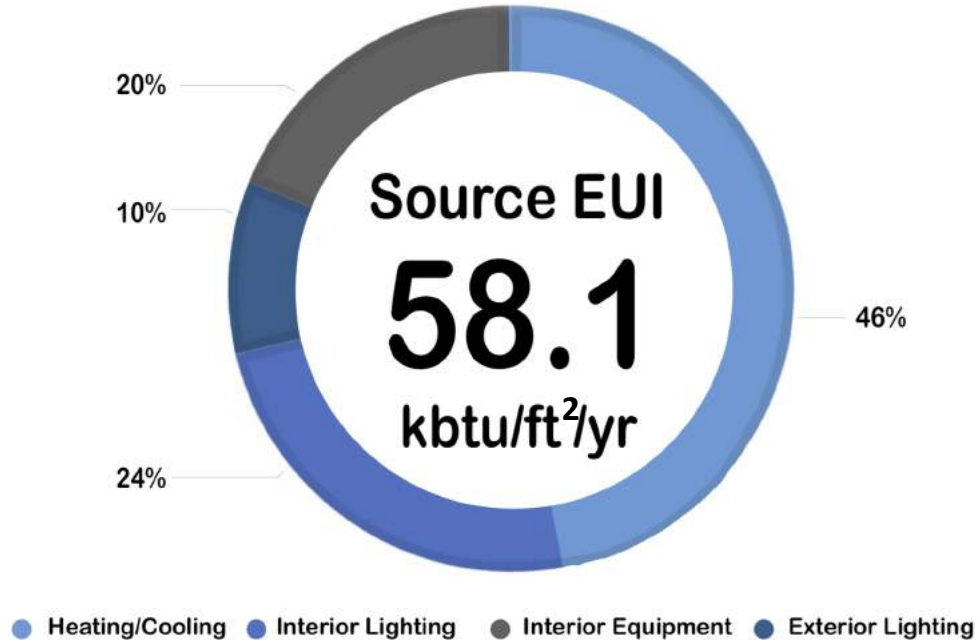
Affordable  
Efficiency

## Design Parameters

Climate Zone **6A**

**7,186** Heating Degree Days

**677** Cooling Degree Days



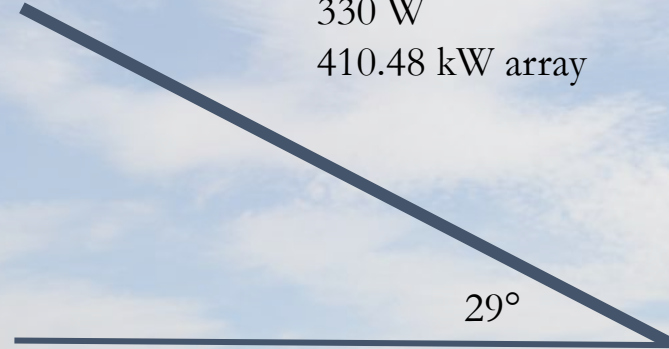


Visible  
Engineering

**Panasonic HIT N330**  
**19.7%**



1,244 panels  
330 W  
410.48 kW array



Energy Production



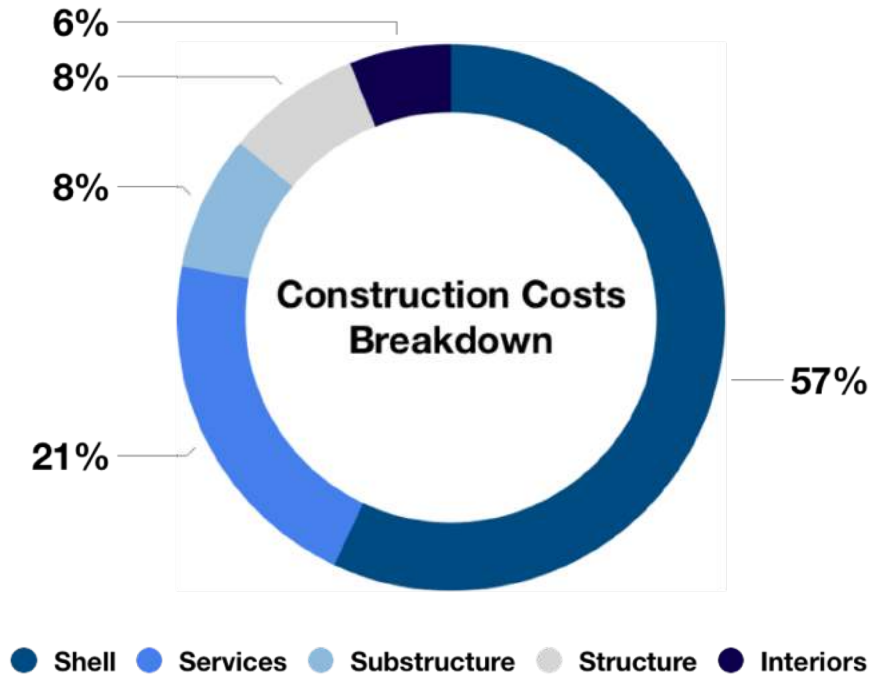


Affordable  
Efficiency

Total Construction Costs:  
**\$17.8 Million**

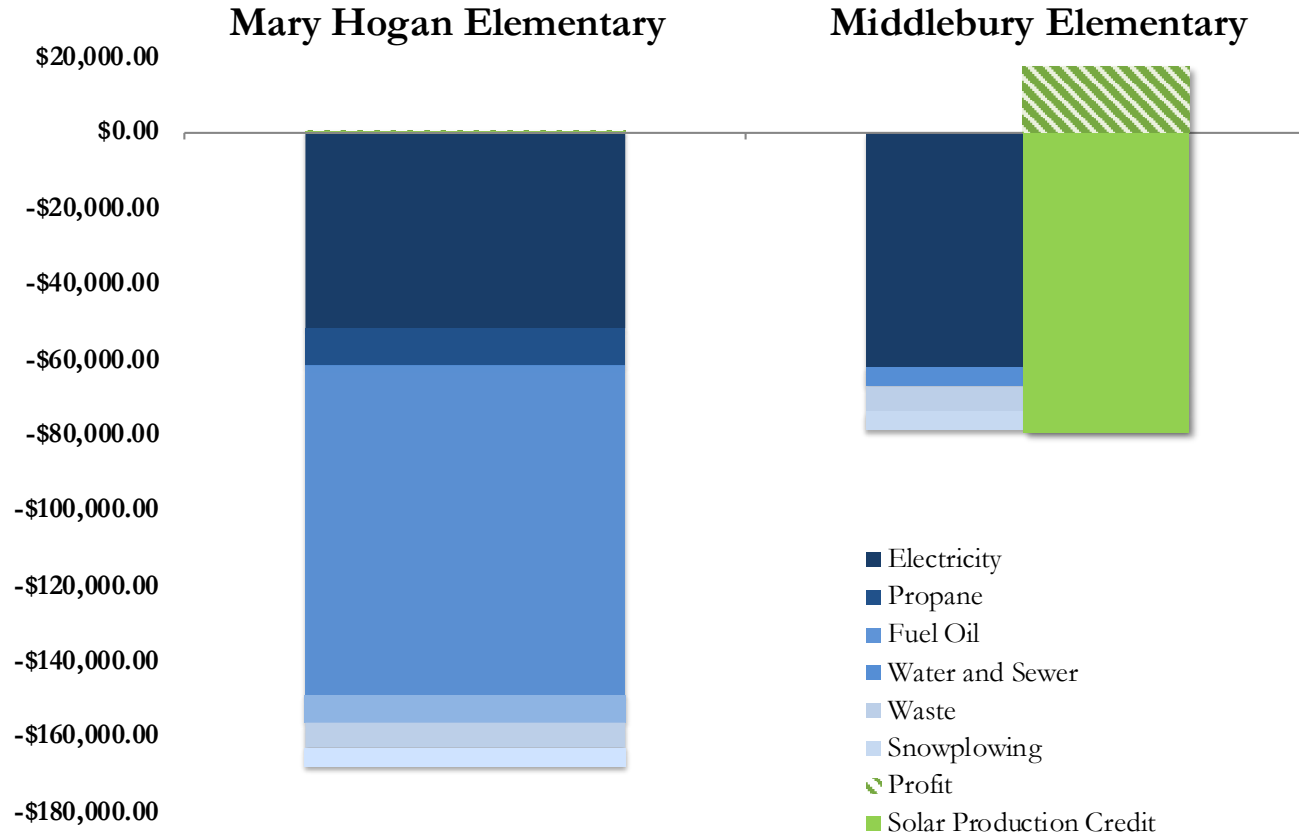
Median New England  
Elementary School Cost<sup>1</sup>:  
**\$400/ft<sup>2</sup>**

Middlebury Elementary Cost:  
**\$250/ft<sup>2</sup>**





Affordable  
Efficiency





Zach Berzolla  
Physics '18  
**Team Lead and  
Project Manager**



Amanda  
Kirkeby  
Physics '19  
**Energy Model**



Bennett Doherty  
Physics '18  
**MEP**



Alex Browne  
Physics '18  
Building Codes,  
**MEP**



Ben Belinski En-  
glish '18.5  
**MEP**



Priyanjali Sinha  
SOAN '18  
**Envelope &  
Landscape De-  
sign**



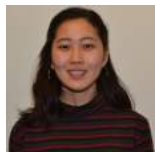
Max Lutzus  
Economics &  
Physics '20.5  
**Envelope**



Jack Allnut  
HARC '20.5  
**Envelope &  
Architecture**



Evan Weinman  
HARC '18  
**Architecture**



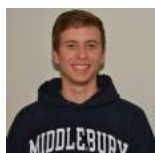
Karen  
Kobayashi  
HARC '18.5  
**Architecture**



Elliott Friedman  
HARC '19  
**Architecture**



Emma  
McDonagh  
HARC '19  
**Architecture &  
Interior Design**



Thomas  
Wentworth  
ES/Psych '18  
**PV & Interior  
Design**



Olivia Ryder  
HARC & Studio  
Art '19  
**Architecture &  
Interior Design**



Maria Abragan  
ES/Geography  
'18  
**Interior Design**



Gigi Miller  
Comp. Sci. &  
Studio Art '18  
**Interior Design**



Katie Aman  
SOAN '19  
**Deliverables**



Ry  
Storey-Fisher  
ES/Policy '18  
**Deliverables**



Alpen High Performance  
Windows provided  
guidance in choosing  
windows and tuning  
glazing.



Tom Buzzell, principal  
of Mary Hogan,  
provided guidance on  
programmatic design and  
current operating costs.



Greg Sellers provided  
insight on the structural  
systems required to  
support our building.



Wayne Nelson and Derek  
Siegler provided guidance  
on choosing our HVAC  
system and how to create  
a system layout.



Jack Kerby-Miler '14.5  
provided envelope design  
reviews.



Myron Selleck and Spencer  
Clark of Middlebury's  
Facilities provided electrical  
and HVAC design  
reviews.



Dennis Senesac  
provided guidance on  
selecting the GSHP  
equipment.



Solatube provided design guidance for using their product to daylight  
interior spaces.



Ashley Cadwell '80 is our consultant for sustainable school design that  
supports inquiry project-based intra-disciplinary curricula.



Andrea Kerz-Murray, Sam Ostrow, and Ashar Nelson provided archi-  
tecture critiques and design reviews.



#### BUILDING STEWARDSHIP

Larson Lovdal '15.5, provided design suggestions on the lighting,  
BMS,



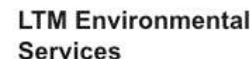
Peter Schneider '97  
provided design  
review and contacts  
with other industry  
experts.



Susan Davis,  
Landscape design  
consultation



Aubrey Gewehr,  
DOAS ventilation  
system design



Liam Murphy re-  
viewed the radon  
management plan.



# Team & Advisors



## Funding Provided By:

- Middlebury Undergraduate Research Office
- Middlebury's President
- Middlebury's Office of Sustainability Integration
- Middlebury's Environmental Affairs Department

## Works Cited

1. School Planning & Management. 2015. Annual School Construction Report.

## Creative Commons Image Credit

- Solar panel by Rockicon from the Noun Project
- Hands by Valeriy from the Noun Project
- Savings by vinuprasad from the Noun Project
- Lighthouse by ProSymbols from the Noun Project
- Vermont by Maria Darron from the Noun Project
- Green engine by Attilio Baghino from the Noun Project
- Faucet by Alina Oleynik from the Noun Project
- Faucet by Georgiana Ionescu from the Noun Project
- Dollar coin by Musmellow from the Noun Project
- School by Ayub Irawan from the Noun Project



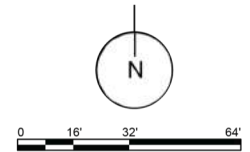
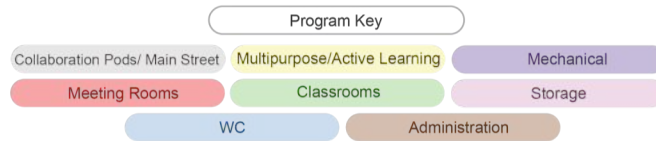
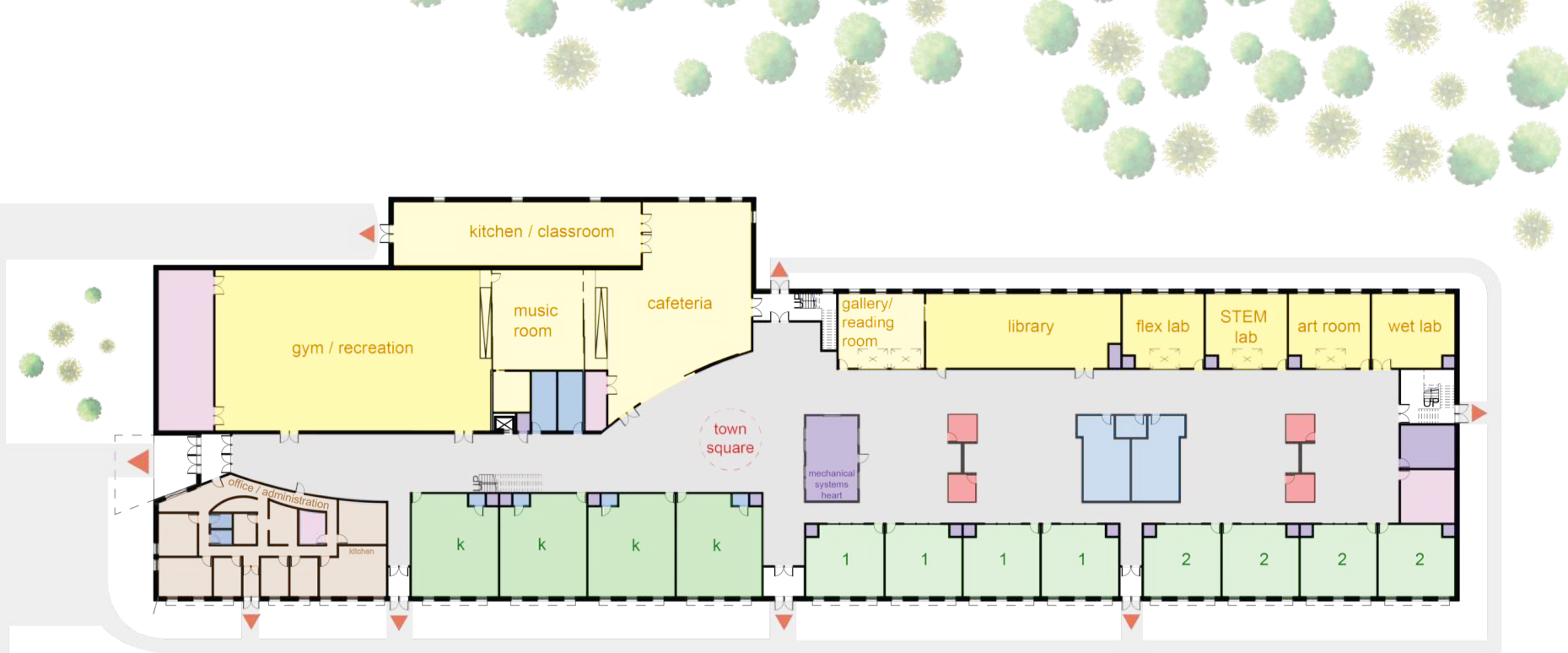


# Middlebury Elementary

By MiddZEST

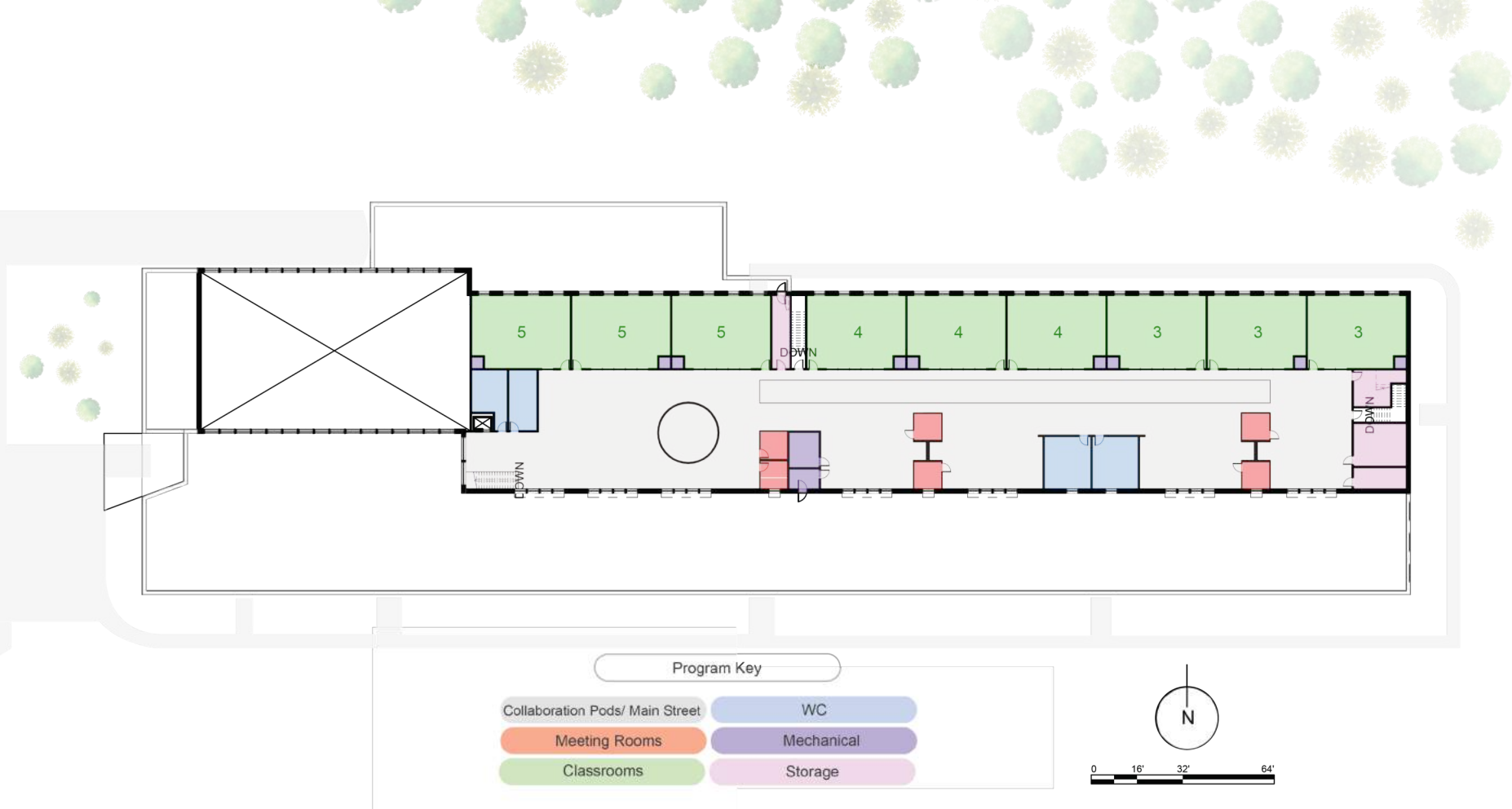


Thank You!



# Appendix: Floor Plan

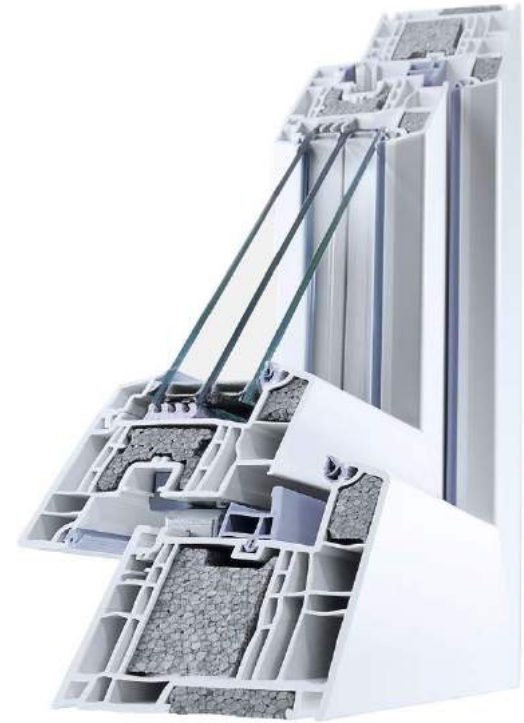


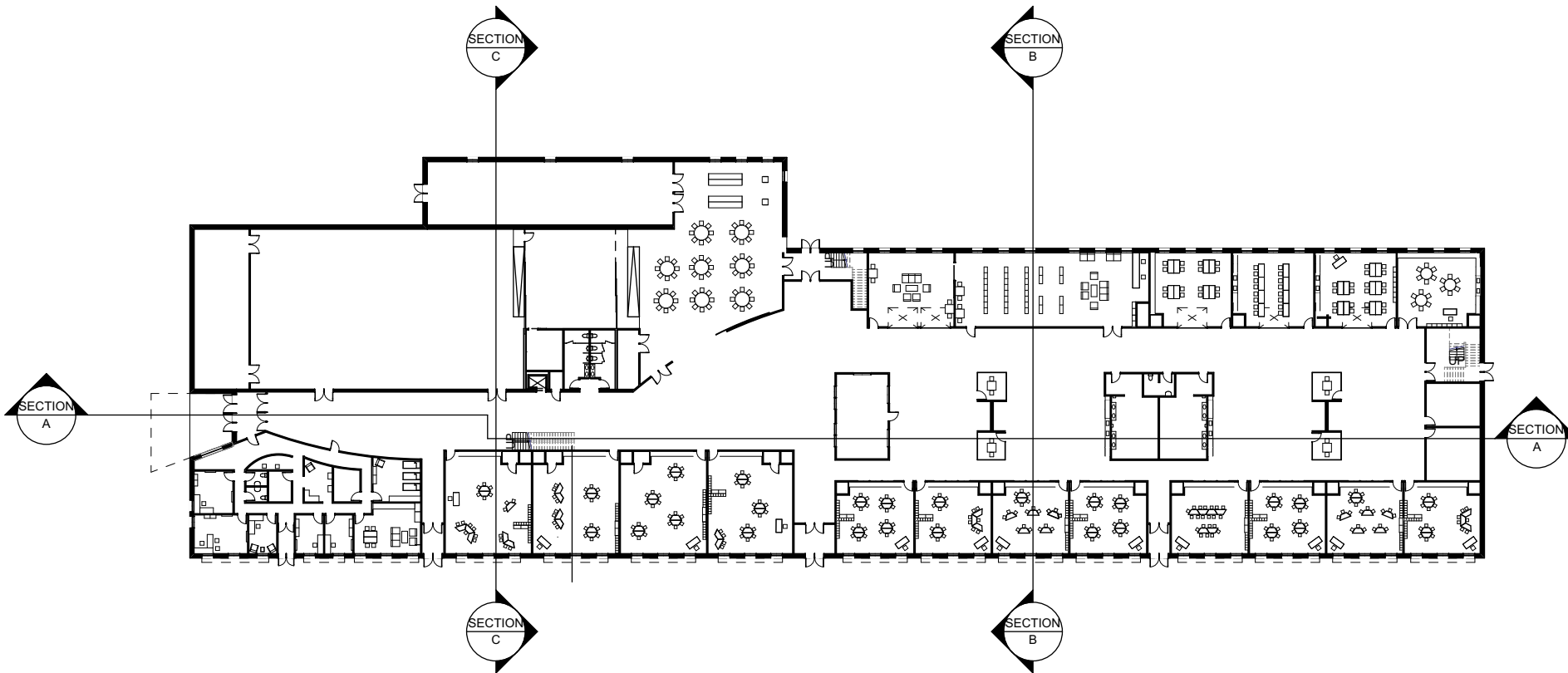


# Appendix: Floor Plan



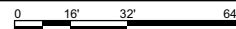
|                     | Specification             | Size (l x h)  | Quantity | Remarks  |
|---------------------|---------------------------|---------------|----------|--|
| <b>South-Facing</b> | Fixed                     | 4' x 4'       | 43       | Center windows in each South-facing classroom. All windows on the 2nd story South-facing wall.                         |
|                     | Operable Tilt Turn/Hopper | 4' x 4'       | 32       | Two outer-most windows in each South-facing classroom, all exterior windows in the Administration neighborhood.        |
|                     | Fixed                     |               |          | Above all view windows. One additional window in each  |
|                     | Daylighting               | 4'x 2'        | 77       | South-facing bathroom on the 2nd floor.  |
| <b>North-Facing</b> | Fixed                     | 4' x 4'       | 29       | Two center windows in each North-facing 2nd floor classroom. Central window in groups of 3 on the 1st floor.           |
|                     | Operable Tilt Turn/Hopper | 4' x 4'       | 34       | Outer-most windows in each North-facing classroom on the 2nd floor. Outer-most windows on the first floor groups of 3. |
|                     | Fixed                     |               |          |  |
|                     | Daylighting               | 4'x 2'        | 63       | Above all view windows.  |
|                     | Fixed                     | 2' x 4'       | 2        | Stairwell  |
| <b>East-Facing</b>  | Fixed                     | 4' x 4'       | 1        | Multipurpose Room  |
|                     | Fixed                     |               |          |  |
|                     | Daylighting               | 4'x 2'        | 1        | Multipurpose Room  |
| <b>West-Facing</b>  | Fixed                     | 2' x 4'       | 2        | Stairwell  |
|                     | Fixed                     | 4' 2" x 8' 2" | 2        | 2nd floor above the main staircase to view the PV array  |
|                     | Operable Tilt Turn/Hopper | 4' x 4'       | 2        | Administration neighborhood  |
|                     | Fixed                     |               |          |  |
|                     | Daylighting               | 4'x 2'        | 2        | Above view windows in Administration neighborhood  |





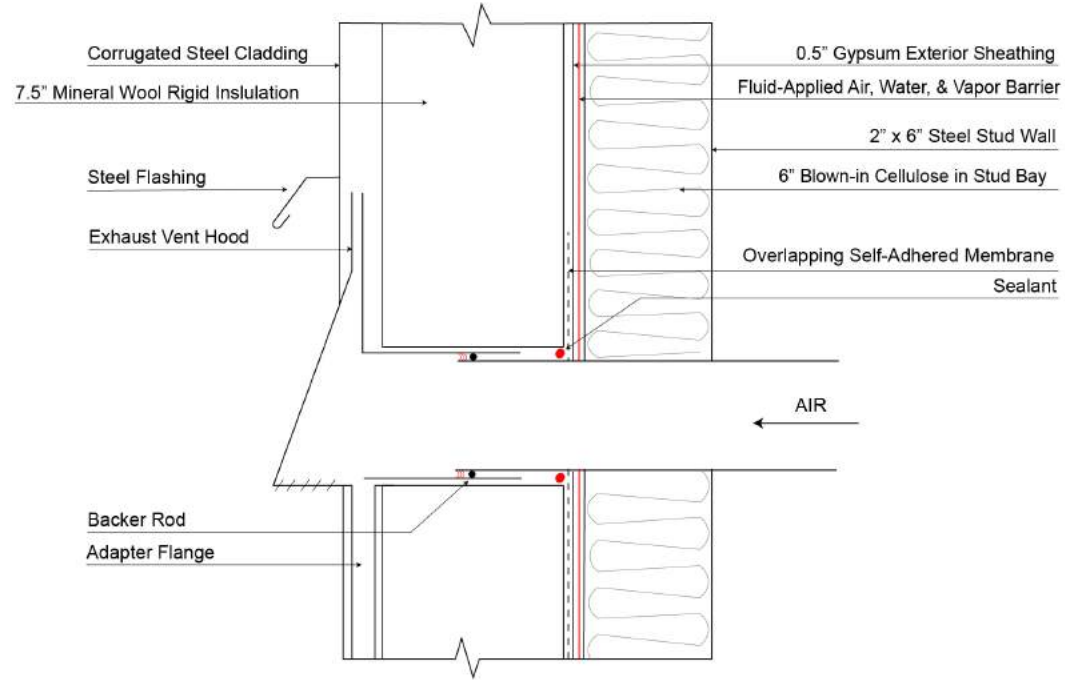
# 1st FLOOR PLAN

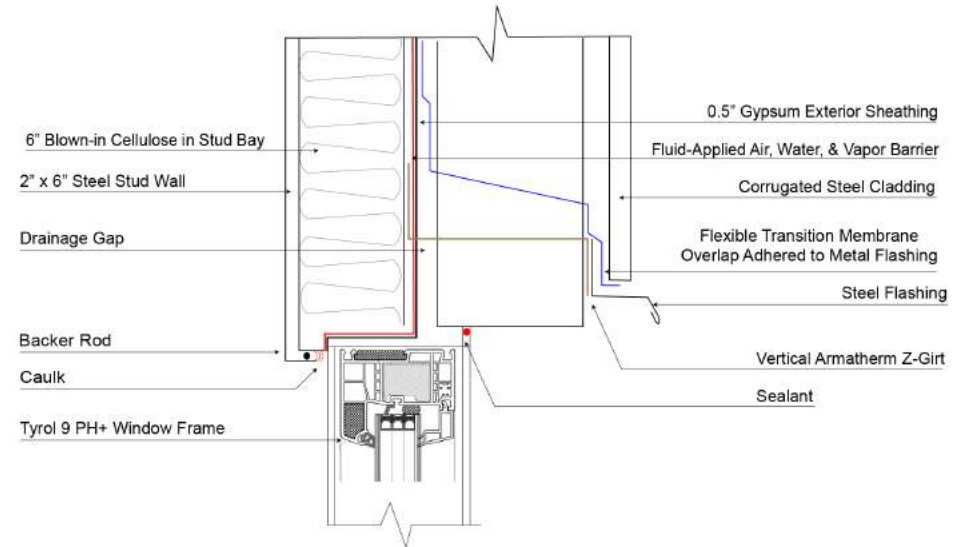
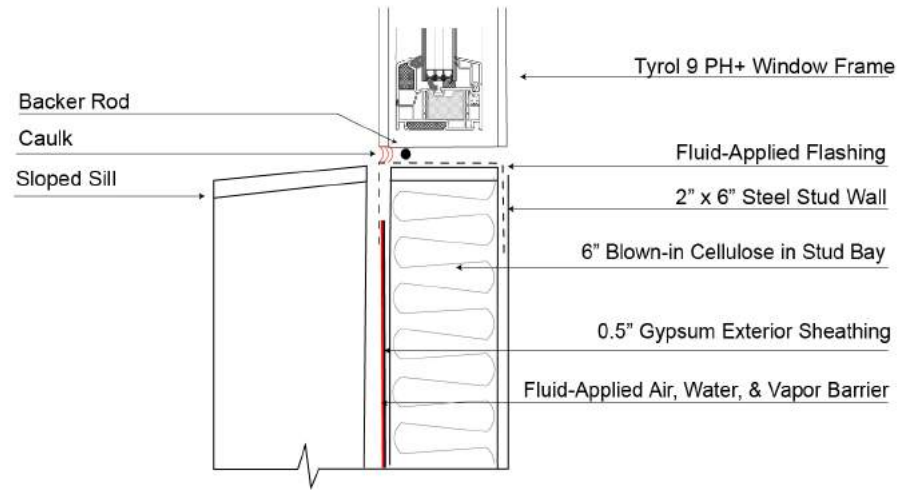
SCALE: 1/32" = 1'-0"



## Appendix: Furniture Layout

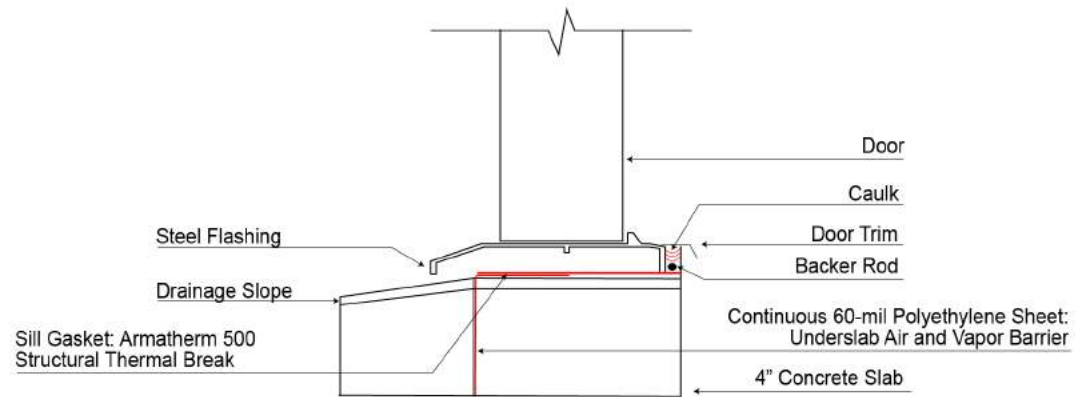
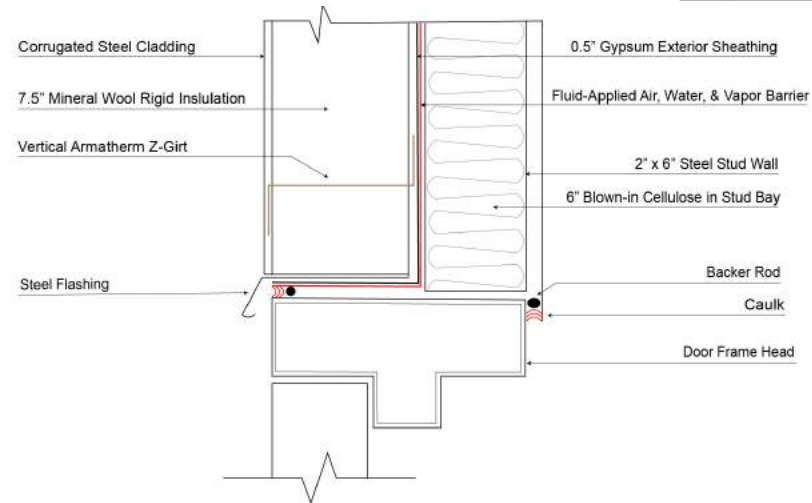
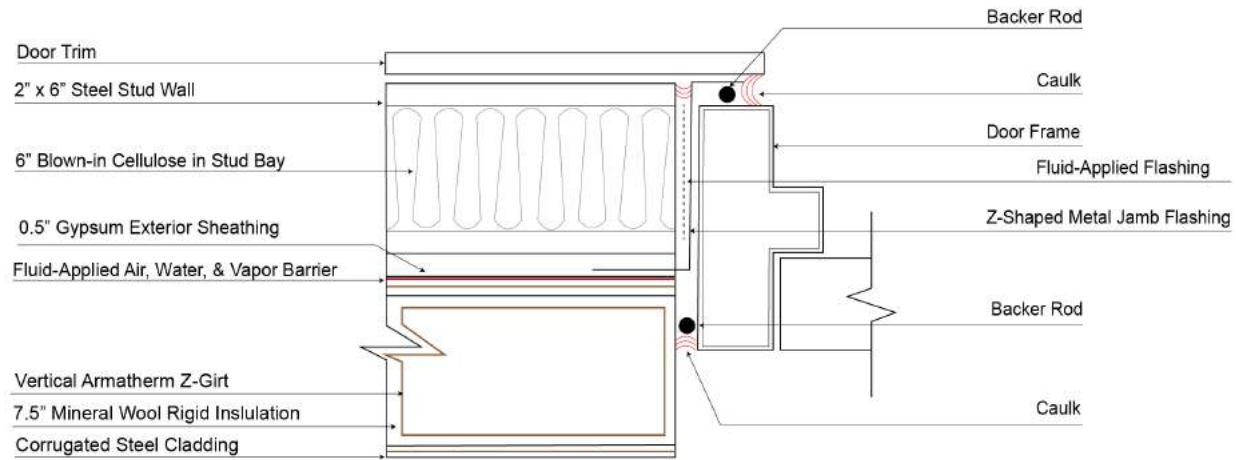






## Appendix: Envelope Details





## Appendix: Envelope Details

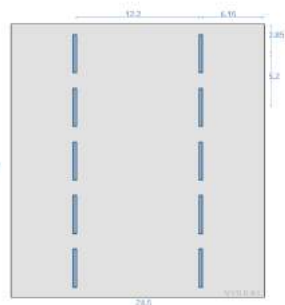
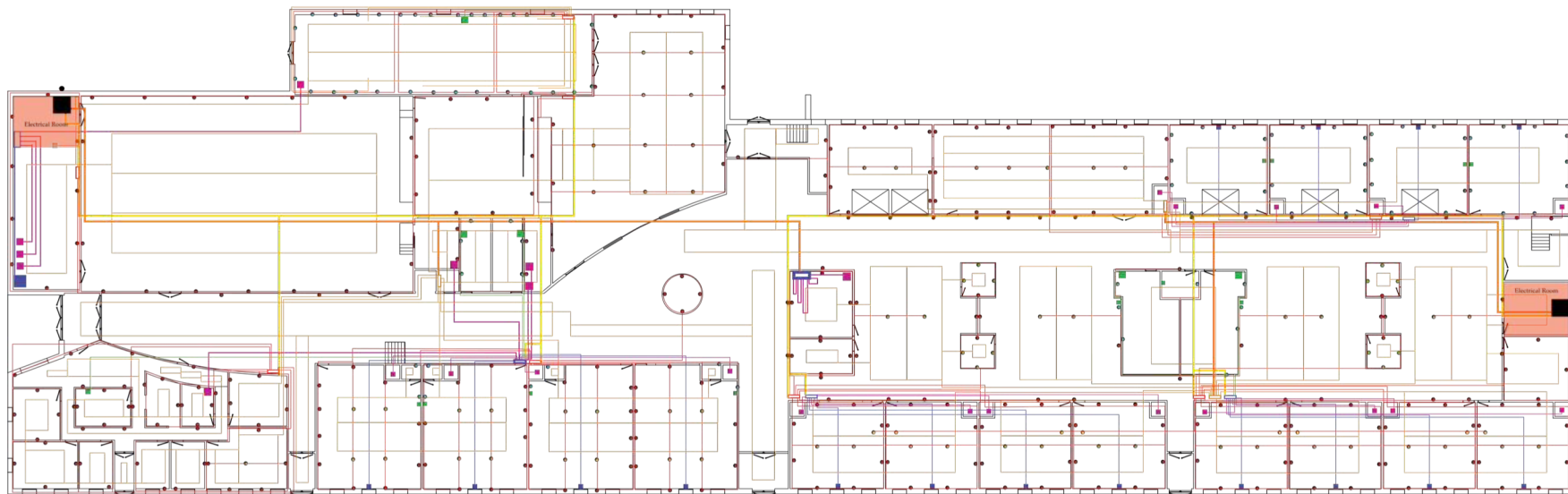


| Site to Source<br>Multiplication<br>Factor     | 3.15                               | 1.19                               | 1.15                              |                                    |                                    |                                      |  |
|--|------------------------------------|------------------------------------|-----------------------------------|------------------------------------|------------------------------------|--------------------------------------|--|
|  | Electricity                        | #2 Fuel Oil                        | Propane                           | Total Energy<br>Consumption        | Renewable<br>Energy Production     | Net Energy<br>Consumption            |  |
| Site Energy                                    | 15.64<br>kBtu/ft <sup>2</sup> /yr. | 38.33<br>kBtu/ft <sup>2</sup> /yr. | 6.39<br>kBtu/ft <sup>2</sup> /yr. | 60.36<br>kBtu/ft <sup>2</sup> /yr. |                                    | 60.36<br>kBtu/ft <sup>2</sup> /yr.   |  |
| Existing<br>School                             | +                                  |                                    |                                   | =                                  |                                    | =                                    |  |
| Source Energy                                  | 49.26<br>kBtu/ft <sup>2</sup> /yr. | 45.62<br>kBtu/ft <sup>2</sup> /yr. | 7.35<br>kBtu/ft <sup>2</sup> /yr. | 102.2<br>kBtu/ft <sup>2</sup> /yr. |                                    | 102.2<br>kBtu/ft <sup>2</sup> /yr.   |  |
| Site Energy                                    | 18.46<br>kBtu/ft <sup>2</sup> /yr. |                                    |                                   | 18.46<br>kBtu/ft <sup>2</sup> /yr. | 24.5<br>kBtu/ft <sup>2</sup> /yr.  | -6.04<br>kBtu/ft <sup>2</sup> /yr.   |  |
| Proposed<br>Middlebury<br>Elementary<br>School |                                    |                                    |                                   | =                                  | -                                  | =                                    |  |
| Source Energy                                  | 58.15<br>kBtu/ft <sup>2</sup> /yr. |                                    |                                   | 58.15<br>kBtu/ft <sup>2</sup> /yr. | 77.18<br>kBtu/ft <sup>2</sup> /yr. | - 19.03<br>kBtu/ft <sup>2</sup> /yr. |  |



# Appendix: Energy Analysis





- 480/277 Feeder Lines to Breaker Panels
- 120/208 Feeder Lines to Breaker Panels
- 20 Amp Lighting Circuit, 10-Gauge Wire
- 20 Amp General Purpose 1 Pole Circuit, 10-Gauge Wire, AFCI Protected
- Dedicated 20 Amp 2 Pole Heat Pump Circuit, 12-Gauge Wire, with Fuse
- Dedicated 40 Amp Heat Pump Circuit, 6-Gauge Wire, with Fuse
- Dedicated 20 Amp Ventilation 2 Pole Circuit, 10-Gauge Wire, with Fuse
- Dedicated 60 Amp Ventilation 3 Pole Circuit, 4-Gauge Wire, with Fuse
- Dedicated 30/40/60 Amp Point Source Water Heating Circuit, 8/6/4 Gauge Wire
- Dedicated 20 Amp Kitchen Circuit, 10-Gauge Wire
- Dedicated 20 Amp Air Compressor / Sprinkler System Circuit, 10-Gauge Wire, with Fuse

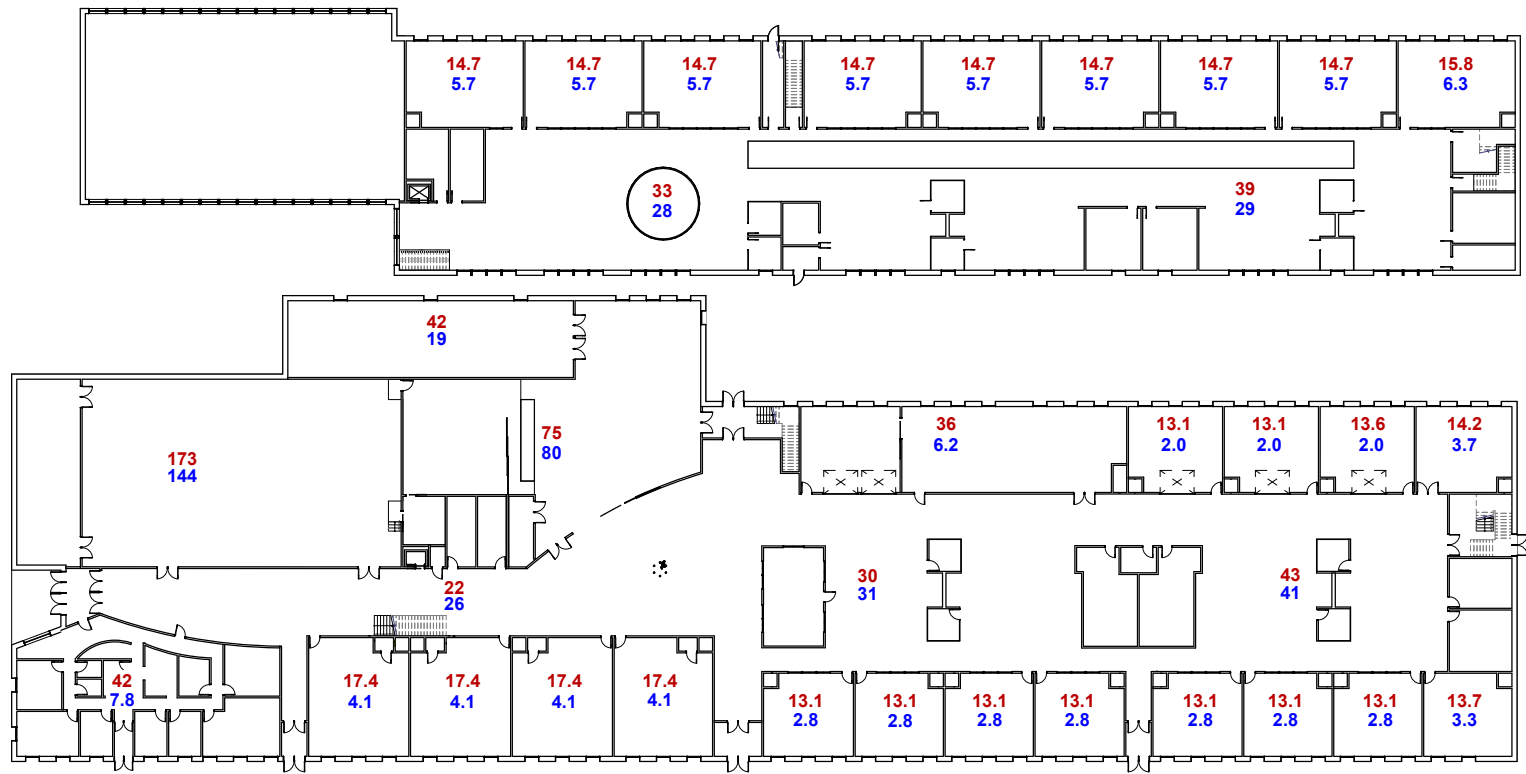
- 3 phase power transformer
- 100 Amp 3 Phase Power 120/208 General Purpose Breaker Panel (each circuit single pole)
- 100 Amp 3 Phase Power 480/277 Lighting Breaker
- 100 Amp 3 Phase Power 120/208 Small Mechanical System Breaker Panel
- 150 Amp 3 Phase Power 120/208 Small Mechanical System Breaker Panel
- 300 Amp 3 Phase Power 480/277 Large Mechanical System Breaker Panel

- 40 Amp Ground Source Heat Pump
- 20 Amp Ground Source Heat Pump
- 40 Amp Point Source Water Heater
- 20 Amp Point Source Water Heater
- Ventacity VS 3000 Ventilation System
- Ventacity VS 500 Ventilation System
- Leviton 20 Amp Duplex Tamper Resistant Outlet
- Leviton 20 Amp Duplex Ceiling Outlet
- Leviton 20 Amp Commercial Grade Self Grounding Duplex Outlet Floor Box
- Leviton 20 Amp 125-Volt Duplex Self-Test Tamper Resistant GFCI Outlet



# Appendix: Electrical and Light Fixtures





# Appendix: Heating and Cooling





## Appendix: Heating and Cooling



| Assemblies Category - Name   | RS Means Line No. | Quantity (units) | Unit    | Estimated Cost per Unit 2014 | Per Unit - Adjusted for escalation and location | Estimated Subtotal | Per Unit    | Notes Required? | Justification/Notes (Required for values different than RSMeans Estimate) |
|--|-------------------|------------------|---------|------------------------------|---|--------------------|-------------|-----------------|---|
| <b>Substructure</b>  |                   |                  |         |                              |   |                    |             |                 |   |
| Footings: Concrete in place, including forms (40 uses), grade 60 rebar, concrete (Portland cement Type         | 03 30 53.40 0300  | 62.51            | C.Y.    | \$1,325.00                   | \$1,307.33                                      | \$81,720.94        | \$1,307.33  | NO              |   |
| Footings: Rigid insulation, Extruded polystyrene, 25 PSI compressive strength, 2" thick R10                    | 07 21 13.10 1940  | 846              | S.F.    | \$1.94                       | \$1.91  | \$1,619.35         | \$1.91      | -               |   |
| Footings: Armathon 500 thermal break   | -                 | 47               | Ea.     | -                            | -   |                    |             |                 |   |
| Underlab: Rigid insulation, Extruded polystyrene, 25 PSI compressive strength, 4" thick R20                    | 07 21 13.10 1940  | 51570            | S.F.    | \$3.88                       | \$3.83  | \$197,422.58       | \$3.83      | NO              |   |
| Footings: Stormwater collection, polyvinyl chloride pipe, 20' lengths, SDR 35, 8&S, 4" diameter                | 33 31 13.25 0200  | 2540             | C.Y.    | \$0.28                       | \$0.28  | \$707.98           | \$0.28      | NO              |   |
| Slab: Concrete in place, including forms (40 uses), grade 60 rebar, concrete (Portland cement Type II), p      | 03 30 53.40 0300  | 636              | C.Y.    | \$1,325.00                   | \$1,307.33                                      | \$831,459.22       | \$1,307.33  | NO              |   |
| Slab: Thick Edge: Concrete in place, including forms (40 uses), grade 60 rebar, concrete (Portland cemer       | 03 30 53.40 0300  | 63.44            | C.Y.    | \$1,325.00                   | \$1,307.33                                      | \$82,936.75        | \$1,307.33  | NO              |   |
| Slab: General fill, gravel fill, compacted, under floor slabs, 4" deep   | 31 23 23.17 0500  | 15170            | S.F.    | \$0.77                       | \$0.76  | \$39,179.22        | \$0.76      | NO              |   |
| Underlab: Stormwater collection, polyvinyl chloride pipe, 20' lengths, SDR 35, 8&S, 4" diameter                | 33 31 13.25 0200  | 5000             | L.F.    | \$0.28                       | \$0.28  | \$418.10           | \$0.28      | NO              |   |
| Slab: Polyethylene Sheet, 60-mil   | 07 13 53.10 2200  | 51570            | S.F.    | \$2.78                       | \$2.74  | \$141,452.26       | \$2.74      | \$141,452.26    |   |
| <b>Sheels</b>  |                   |                  |         |                              |   |                    |             |                 |   |
| Roof: EPDM, 60 mils, 0.40 opf, loose-laid & ballasted with stone (100psf)                                      | 07 53 23.20 4600  | 51425            | S.F.    | \$4,608.46                   | \$4,547.38                                      | \$9,953,698.35     | \$13,058.44 | \$10,260,294.15 |   |
| Roof: Roof decking, made from recycled materials, open type, 3" deep, type N, 22 ga., 50-500 squares           | 05 51 23.50 3250  | 51425            | S.F.    | \$16.00                      | \$157.87  | \$8,118,246.71     | \$157.87    | \$8,118,246.71  | NO  |
| Roof: Gypsum sheathing, gypsum, weatherproof, 1/2" thick   | 06 16 43.10 0020  | 51425            | S.F.    | \$1.49                       | \$1.47  | \$75,601.17        | \$1.47      | \$75,601.17     | NO  |
| Roof: Mineral wool insulation (18.75")   | -                 | 51425            | S.F.    | \$5.06                       | \$4.99  | \$256,739.55       | \$4.99      | \$256,739.55    | NO  |
| Roof: Fluid-applied membrane air barrier, spray applied vapor barrier, 25 S.F./gallon                          | 07 27 26.10 0100  | 51425            | S.F.    | \$0.37                       | \$0.37  | \$18,772.45        | \$0.37      | \$18,772.45     | NO  |
| Roof: Sheet metal flashing and counter flashing, including up to 4 bends, steel studs, galvanized, 26 ga       | 07 65 10.10 1936  | 51425            | S.F.    | \$4.56                       | \$4.50  | \$11,084.84        | \$4.50      | \$11,084.84     | NO  |
| Roof: Oriented Strand Board gypcrete laminated WR Barrier 1/2" thick, on roof                                  | 06 16 36.10 4700  | 51425            | S.F.    | \$1.49                       | \$1.47  | \$75,601.17        | \$1.47      | \$75,601.17     | NO  |
| Roof: Sleepers treated 2" x 4"   | 06 11 10.34 0430  | 40               | M.B.F   | \$2,100.00                   | \$2,071.99                                      | \$20,719.88        | \$2,071.99  | \$20,719.88     | NO  |
| Windows, doors, and vents: Sheet metal flashing and counter flashing, including up to 4 bends, steel st        | 07 65 10.10 1938  | 4000             | S.F.    | \$4.20                       | \$4.14  | \$16,575.90        | \$4.14      | \$16,575.90     | NO  |
| Roof: Backer rod, polyethylene, 1" diameter  | 07 91 23.10 0090  | 1314             | L.F.    | \$1.31                       | \$1.29  | \$1,698.38         | \$1.29      | \$1,698.38      | NO  |
| Roof: Solatube   | -                 | 30               | Ea.     | -                            | -   | \$1,126.06         |             | \$33,781.80     | YES   |
| Exterior walls: Partition wall, stud wall, 8' to 12' high; exterior, 1/2" gypsum sheathing, 1/2" gypsum fir    | 09 21 16.33 9400  | 52045.8          | S.F.    | \$6.35                       | \$6.27  | \$326,082.41       | \$6.27      | \$326,082.41    | NO  |
| Exterior walls: Poured loose-fill insulation, cellulose fiber, R3.8 per inch, 6" thick                         | 07 21 23.10 0022  | 52045.8          | S.F.    | \$1.02                       | \$1.01  | \$52,378.59        | \$1.01      | \$52,378.59     | NO  |
| Exterior walls: Fluid-applied membrane air barrier, spray applied vapor barrier, 25 S.F./gallon                | 07 27 26.10 0100  | 52045.8          | S.F.    | \$0.37                       | \$0.37  | \$19,000.08        | \$0.37      | \$19,000.08     | NO  |
| Exterior walls: Mineral wool insulation (7.5")   | 07 21 23.10 0100  | 52045.8          | S.F.    | \$2.03                       | \$2.03  | \$104,243.67       | \$2.00      | \$104,243.67    | NO  |
| Exterior walls: Steel siding, galv, corrugated or ribbed, on steel frame, 30 ga.                               | 07 42 13.30 0080  | 52045.8          | S.F.    | \$4.24                       | \$4.18  | \$217,730.62       | \$4.18      | \$217,730.62    | NO  |
| Exterior walls: Furring, wood strips, 1" X 2", on walls, on wood   | 06 11 10.42 0012  | 7435             | L.F.    | \$1.29                       | \$1.27  | \$9,463.21         | \$1.27      | \$9,463.21      | NO  |
| Exterior walls: Steel louvers, 18 gauge, fixed blade, 12" X 12", galvanized                                    | 08 91 26.10 0100  | 25               | Ea.     | \$100.00                     | \$98.67   | \$2,466.65         | \$98.67     | \$2,466.65      | NO  |
| Parapet: Partition wall, stud wall, 8' to 12' high; exterior, 1/2" gypsum sheathing, 1/2" gypsum finished      | 09 21 16.33 9400  | 6680             | S.F.    | \$6.35                       | \$6.27  | \$41,852.19        | \$6.27      | \$41,852.19     | NO  |
| Parapet: Fluid-applied membrane air barrier, spray applied vapor barrier, 25 S.F./gallon                       | 07 27 26.10 0100  | 6680             | S.F.    | \$0.37                       | \$0.37  | \$2,438.63         | \$0.37      | \$2,438.63      | NO  |
| Parapet: Poured loose-fill insulation, cellulose fiber, R3.8 per inch, 6" thick                                | 07 21 23.10 0022  | 6680             | S.F.    | \$1.02                       | \$1.01  | \$6,722.71         | \$1.01      | \$6,722.71      | NO  |
| Parapet: Steel siding, galv, corrugated or ribbed, on steel frame, 30 ga.                                      | 07 42 13.30 0080  | 6680             | S.F.    | \$4.24                       | \$4.18  | \$27,945.40        | \$4.18      | \$27,945.40     | NO  |
| Parapet: Fluid-applied membrane air barrier, spray applied vapor barrier, 25 S.F./gallon                       | 07 27 26.10 0100  | 4600             | S.F.    | \$0.37                       | \$0.37  | \$1,679.30         | \$0.37      | \$1,679.30      | NO  |
| Parapet cap: Poured loose-fill insulation, cellulose fiber, R3.8 per inch, 6" thick                            | 07 21 23.10 0022  | 2956.5           | S.F.    | \$1.02                       | \$1.01  | \$2,975.40         | \$1.01      | \$2,975.40      | NO  |
| Exterior Doors: Standard hollow metal doors, insulated, 1-3/4" thick, full panel, 18 ga. 3'-0" X 7'-0"         | 08 13 13.13 1760  | 33               | Ea.     | \$615.00                     | \$606.80  | \$20,024.28        | \$606.80    | \$20,024.28     | NO  |
| Exterior Doors: Standard hollow metal doors, vision lite   | 08 13 13.13 2000  | 33               | Ea.     | \$104.00                     | \$102.61  | \$3,386.22         | \$102.61    | \$3,386.22      | NO  |
| Expansion control: Expansion joint assemblies, floor cover assemblies, 1" space, aluminum                      | 07 95 13.50 0200  | 114              | L.F.    | \$43.00                      | \$42.43   | \$4,836.61         | \$42.43     | \$4,836.61      | NO  |
| Expansion control: Expansion joint assemblies, wall and ceiling assemblies, 1" space, aluminum                 | 07 95 13.50 0800  | 170              | L.F.    | \$33.00                      | \$32.56   | \$5,535.17         | \$32.56     | \$5,535.17      | NO  |
| Exterior Windows: Alpen Tyrol TR-9 PH+ Balanced, Fixed 4' X 4', R-9-1, SHGC = 0.24                             | -                 | 2                | Ea.     | -                            | -   | \$2,000.00         |             | \$4,000.00      | YES   |
| Exterior Windows: Alpen Tyrol TR-9 PH+ HighGain, Tilt Turn/Hopper 4' X 4', R-7.7, SHGC = 0.30                  | -                 | 12               | Ea.     | -                            | -   | \$1,250.00         |             | \$40,000.00     | YES   |
| Exterior Windows: Alpen Tyrol TR-9 PH+ HighGain, Fixed 4' X 4', R-8-3, SHGC = 0.35                             | -                 | 43               | Ea.     | -                            | -   | \$1,084.00         |             | \$46,612.00     | YES   |
| Exterior Windows: Alpen Tyrol TR-9 PH+ Balanced, Tilt Turn/Hopper 4' X 4', R-7.7, SHGC = 0.31                  | -                 | 36               | Ea.     | -                            | -   | \$1,250.00         |             | \$45,000.00     | YES   |
| Exterior Windows: Alpen Tyrol TR-9 PH+ Balanced, Fixed 4' X 4', R-9-1, SHGC = 0.24                             | -                 | 30               | Ea.     | -                            | -   | \$1,084.00         |             | \$32,520.00     | YES   |
| Exterior Windows: Alpen Tyrol TR-9 PH+ Balanced, Fixed Non-Tempered 2' X 4', R-9-1, SHGC = 0.24                | -                 | 146              | Ea.     | -                            | -   | \$717.00           |             | \$104,682.00    | YES   |
| Exterior Windows: Skylroofs, translucent panels, 2-3/4" thick, ridge and furrow units, over 4' O.C., doub      | 08 45 10.10 2750  | 128              | SF Hor. | \$75.50                      | \$74.49   | \$9,535.09         | \$74.49     | \$9,535.09      | NO  |
| Floor: Floor decking, made from recycled materials, non-cellular composite decking, galvanized, 2" dee         | 05 51 23.50 3200  | 22116            | S.F.    | \$2.81                       | \$2.81  | \$62,189.83        | \$2.81      | \$62,189.83     | NO  |
| 2nd Floor Slab: Concrete in place, including forms (40 uses), grade 60 rebar, concrete (Portland ceme          | 03 30 53.40 0300  | 204.76           | C.Y.    | \$1,325.00                   | \$1,307.33                                      | \$267,688.04       | \$1,307.33  | \$267,688.04    | NO  |
| <b>Interiors</b>   |                   |                  |         |                              |   |                    |             |                 |   |
| Interior walls: Partition wall, stud wall, 8' to 12' high, 1/2", interior, gypsum board, stg. tape & finish 2' | 09 21 16.33 1200  | 82066.28         | S.F.    | \$4.75                       | \$4.69  | \$384,615.09       | \$4.69      | \$384,615.09    | NO  |
| Interior fire doors: Metal fire doors, flush, "A" label 3 hour, egress core, 18 ga. 3'-0" X 7'-0"              | 08 13 13.15 0680  | 8                | Ea.     | \$890.00                     | \$878.13  | \$7,025.03         | \$878.13    | \$7,025.03      | NO  |
| Interior doors: Smooth wood doors, flush, interior, hollow core, lauan face, 1-3/4", 3'-0" X 7'-0"             | 08 14 16.09 0108  | 72               | Ea.     | \$206.00                     | \$203.25  | \$14,634.16        | \$203.25    | \$14,634.16     | NO  |
| Interior doors: Smooth wood doors, flush, interior, hollow core, lauan face, 1-3/4", pair of 3'-0" X 7'-0"     | 08 14 16.09 0112  | 10               | Pr.     | \$240.00                     | \$236.80  | \$2,368.00         | \$236.80    | \$2,367.99      | NO  |
| Interior doors: Wood doors, vision lite  | 08 14 16.09 5000  | 92               | Ea.     | \$104.00                     | \$104.00  | \$9,440.37         | \$104.00    | \$9,440.37      | NO  |
| Interior metal frames: Standard hollow metal frames, 16 ga., up to 5-3/4" jamb dept, 3'-0" X 7'-0" singl       | 08 12 13.10 0100  | 77               | Ea.     | \$236.00                     | \$232.85  | \$17,929.60        | \$232.85    | \$17,929.60     | NO  |
| Interior metal frames: Standard hollow metal frames, 16 ga., up to 5-3/4" jamb dept, 6'-0" wide, doubl         | 08 12 13.13 0140  | 28               | Ea.     | \$295.00                     | \$291.06  | \$8,149.82         | \$291.06    | \$8,149.82      | NO  |
| Garage doors: Residential garage doors, overhead, sectional, incl. hardware, fiberglass, 9' X 7', stand        | 08 36 13.20 0200  | 5                | Ea.     | \$1,250.00                   | \$1,233.33                                      | \$6,166.63         | \$1,233.33  | \$6,166.63      | NO  |
| Classrooms: Whiteboards  | -                 | 21               | Ea.     | -                            | -   | \$750.00           |             | \$15,750.00     | YES   |
| Classrooms: PowerLite 680 XGA 3LCD Presentation Display  | -                 | 21               | Ea.     | -                            | -   | \$1,517.00         |             | \$31,857.00     | YES   |
| Classrooms: 3.5" wooden peg  | -                 | 420              | Ea.     | -                            | -   | \$0.60             |             | \$252.00        | YES   |
| Classrooms: Plywood, 3/4" thick with lumber edge, 12" wide   | -                 | 1575             | S.F.    | \$9.50                       | \$9.37  | \$14,762.92        | \$9.37      | \$14,762.92     | NO  |
| Art room: Whiteboards (4' X 20')   | -                 | 1                | Ea.     | -                            | -   | \$750.00           |             | \$750.00        | YES   |
| Art room: PowerLite 680 XGA 3LCD Presentation Display  | -                 | 1                | Ea.     | -                            | -   | \$1,517.00         |             | \$1,517.00      | YES   |
| Art room: Multi-Section Cabinet w/ 15 Bins   | -                 | 2                | Ea.     | -                            | -   | \$602.00           |             | \$1,204.00      | YES   |
| Music room: Partitions, sliding, acoustic air wall, 1-5/8" thick   | 10 22 43.10 0020  | 1576             | S.F.    | \$52.50                      | \$51.80   | \$81,636.33        | \$51.80     | \$81,636.33     | NO  |
| Exterior: Curbstone DSE 2 Triple 6 Yellow Sand Concrete Steel Reinforced Square Diamond                        | -                 | 1                | Ea.     | -                            | -   | \$2,161.00         |             | \$2,161.00      | YES   |



# Appendix: Finance





# Appendix: Finance



|  |                  |          |        |                    |                    |                       |                     |                       |   |
|--|------------------|----------|--------|--------------------|--------------------|-----------------------|---------------------|-----------------------|---|
| Cafeteria: Cathco D35-3 Triple 5 Gallon Bowl Stainless Steel Refrigerated Beverage Dispenser                 | -                | 1        | Ea.    | -                  | -                  | \$2,194.00            | \$2,194.00          | YES                   | <a href="https://tinyurl.com/yq22cbff">https://tinyurl.com/yq22cbff</a>         |
| Kitchen: 23 Cu Ft Super Deluxe 1 Section Solid Door Reach In Refrigerator                                    | -                | 2        | Ea.    | -                  | -                  | \$3,460.00            | \$6,920.00          | YES                   | <a href="https://tinyurl.com/y7922gtd">https://tinyurl.com/y7922gtd</a>         |
| Kitchen: Maxx Cold 49-cu ft Frost-Free Free-standing Commercial Upright Freezer (Stainless Steel)            | -                | 2        | Ea.    | -                  | -                  | \$6,417.00            | \$12,834.00         | YES                   | <a href="https://tinyurl.com/ybpr2nml">https://tinyurl.com/ybpr2nml</a>         |
| Kitchen: Hoshizaki CR25-FS 55" 2 Solid Door Reach-In Refrigerator, Commercial Series                         | -                | 2        | Ea.    | -                  | -                  | \$5,040.00            | \$10,080.00         | YES                   | <a href="https://tinyurl.com/yb4jqivl">https://tinyurl.com/yb4jqivl</a>         |
| Kitchen: Bakers Pride BCO-E1 Cyclone Series Single Deck Full Size Electric Convection Oven - 208V, 1 Ph      | -                | 1        | Ea.    | -                  | -                  | \$5,327.00            | \$5,327.00          | YES                   | <a href="https://tinyurl.com/yb17x2ce">https://tinyurl.com/yb17x2ce</a>         |
| Kitchen: Avantco MX10 10 Qt. Gear Driven Commercial Planetary Stand Mixer with Guard - 110V, 3/4 h           | -                | 1        | Ea.    | -                  | -                  | \$949.00              | \$949.00            | YES                   | <a href="https://tinyurl.com/yycyzenf">https://tinyurl.com/yycyzenf</a>         |
| Kitchen: Vitamix 62826 Vita-Prep 3 Food Blender - 64 oz. Capacity - 3 HP                                     | -                | 1        | Ea.    | -                  | -                  | \$932.00              | \$932.00            | YES                   | <a href="https://tinyurl.com/ydzhndf">https://tinyurl.com/ydzhndf</a>           |
| Administration: Appliances Cabinet w/ Hutch Set  | -                | 1        | Ea.    | -                  | -                  | \$1,915.00            | \$1,915.00          | YES                   | <a href="https://tinyurl.com/y8nwbxw7">https://tinyurl.com/y8nwbxw7</a>         |
| Administration: Cabinet With Right Hand Sink & Wall Cabinet  | -                | 1        | Ea.    | -                  | -                  | \$2,915.00            | \$2,915.00          | YES                   | <a href="https://tinyurl.com/y8nwbxw7">https://tinyurl.com/y8nwbxw7</a>         |
| Multi-purpose room: Partitions, sliding, acoustic air wall, 1-5/8" thick                                     | 10 22 43.10 0020 | 299      | S.F.   | \$52.50            | \$51.80            | \$15,488.11           | \$15,488.11         | NO                    |   |
| Interior glass: Sheet glass, 3/16" thick, tempered   | 08 81 55.10 0700 | 5085     | S.F.   | \$12.35            | \$12.19            | \$61,962.06           | \$61,962.06         | NO                    |   |
| Cabinetry: Manufactured wood casework frames, base cabinets, counter storage, 36" high, two bay, 3f          | 12 32 23.15 0400 | 180      | Ea.    | 530                | \$522.93           | \$94,127.46           | \$94,127.46         | NO                    |   |
| Cabinetry: Manufactured wood casework frames, wall mounted cabinet, two bay, 24" high, 54" wide              | 12 32 23.15 6800 | 180      | Ea.    | 425                | \$419.33           | \$75,479.57           | \$75,479.57         | NO                    |   |
| Cabinetry: Manufactured wood casework frames, wall mounted cabinet, two bay, 30" high, 36" wide              | 12 32 23.15 9000 | 60       | Ea.    | 430                | \$424.26           | \$25,455.85           | \$25,455.85         | NO                    |   |
| Stairs: Floor plate stairs, shop fabricated, steel stringers, custom steel stairs, 4' wide, medium priced    | 05 51 16.50 0810 | 48       | Risers | \$871.50           | \$859.88           | \$41,274.00           | \$41,274.00         | NO                    |   |
| Stairs: Floor plate stairs, shop fabricated, steel stringers, custom steel stairs, 6' wide, deluxe           | 05 51 16.50 0900 | 24       | Risers | \$1,236.25         | \$1,219.76         | \$29,274.23           | \$29,274.23         | NO                    |   |
| Railing: Railings, Pipe, shop fab'd, 3"6" high, posts @ 5' O.C., aluminum, 2 rail, satin finish, 1-1/4" diam | 05 52 13.50 0020 | 64.9     | L.F.   | \$58.50            | \$57.72            | \$3,746.01            | \$3,746.01          | NO                    |   |
| Air barrier curtains, incl. motor starters, transformers, and door switches, environmental separation, di    | 23 34 33.10 3150 | 9        | Ea.    | \$2,025.00         | \$1,997.99         | \$17,981.90           | \$17,981.90         | NO                    |   |
|  |                  |          |        |                    |                    |                       |                     |                       |   |
| <b>Services</b>  |                  |          |        | <b>\$60,880.00</b> | <b>\$60,067.92</b> | <b>\$64,567.10</b>    | <b>\$183,584.92</b> | <b>\$3,720,996.10</b> |   |
| Plumbing: Toto Ultramax II toilets   | -                | 39       | Ea.    | -                  | -                  | \$1,309.00            | \$51,051.00         | YES                   | <a href="https://tinyurl.com/y8u2ul44">https://tinyurl.com/y8u2ul44</a>         |
| Plumbing: Sloan WES-1000 waterless urinals   | -                | 7        | Ea.    | -                  | -                  | \$854.00              | \$5,978.00          | YES                   | <a href="https://tinyurl.com/y745gm">https://tinyurl.com/y745gm</a>             |
| Plumbing: Elkay EDF 15R Non-Refrigerated Drinking Fountains  | -                | 3        | Ea.    | -                  | -                  | \$677.00              | \$2,031.00          | YES                   | <a href="https://tinyurl.com/ydgtctoh">https://tinyurl.com/ydgtctoh</a>         |
| Plumbing: EcoSmart Pou 6   | -                | 13       | Ea.    | -                  | -                  | \$265.00              | \$3,445.00          | YES                   | <a href="https://tinyurl.com/y9df8tq3">https://tinyurl.com/y9df8tq3</a>         |
| Plumbing: EcoSmart Eco 18 (0160 on page 498)   | -                | 1        | Ea.    | -                  | -                  | \$715.00              | \$715.00            | YES                   | <a href="https://tinyurl.com/ybxyhjhj">https://tinyurl.com/ybxyhjhj</a>         |
| Plumbing: EcoSmart Eco 27  | -                | 9        | Ea.    | -                  | -                  | \$842.00              | \$7,578.00          | YES                   | <a href="https://tinyurl.com/yd48d2ah">https://tinyurl.com/yd48d2ah</a>         |
| Plumbing: American Standard 6055.205.002 0.5 GPM Innsbrook Electronic Proximity Faucet                       | -                | 25       | Ea.    | -                  | -                  | \$865.00              | \$21,625.00         | YES                   | <a href="https://tinyurl.com/y8d9huz4">https://tinyurl.com/y8d9huz4</a>         |
| Plumbing: Lucerne wall mounted sink right faucet hole  | -                | 25       | Ea.    | -                  | -                  | \$217.00              | \$5,425.00          | YES                   | <a href="https://tinyurl.com/y98qagzc">https://tinyurl.com/y98qagzc</a>         |
| Plumbing: American Standard Monterrey 4" Centerset Gooseneck Faucet  | -                | 8        | Ea.    | -                  | -                  | \$344.00              | \$2,752.00          | YES                   | <a href="https://tinyurl.com/yc5txe6y">https://tinyurl.com/yc5txe6y</a>         |
| Plumbing: High Sierra 1.5 GPM High Efficiency Low Flow Shower Head   | -                | 1        | Ea.    | -                  | -                  | \$67.00               | \$67.00             | YES                   | <a href="https://tinyurl.com/y7gxdftf">https://tinyurl.com/y7gxdftf</a>         |
| Plumbing: Commercial Kitchen Sink NSF38-34 3 Compartment   | -                | 2        | Ea.    | -                  | -                  | \$6,875.00            | \$13,750.00         | YES                   | <a href="https://tinyurl.com/ybdvce3q">https://tinyurl.com/ybdvce3q</a>         |
| Plumbing: ARB 2435-A-G-R-T   | -                | 4        | Ea.    | -                  | -                  | \$2,690.00            | \$10,760.00         | YES                   | <a href="https://tinyurl.com/ybk42nct">https://tinyurl.com/ybk42nct</a>         |
| Electrical: Insteon 6 button dimmable switch   | -                | 33       | Ea.    | -                  | -                  | \$127.00              | \$4,191.00          | YES                   | <a href="https://tinyurl.com/y8dn8663">https://tinyurl.com/y8dn8663</a>         |
| Electrical: Insteon Wireless Motion Sensor   | -                | 25       | Ea.    | -                  | -                  | \$63.00               | \$1,575.00          | YES                   | <a href="https://tinyurl.com/yarxw3j3">https://tinyurl.com/yarxw3j3</a>         |
| Electrical: Lutron Maestro Sensor Switch   | -                | 32       | Ea.    | -                  | -                  | \$30.00               | \$960.00            | YES                   | <a href="https://tinyurl.com/y7uko9bu">https://tinyurl.com/y7uko9bu</a>         |
| Electrical: Insteon Garage door kit  | -                | 5        | Ea.    | -                  | -                  | \$113.00              | \$565.00            | YES                   | <a href="https://tinyurl.com/yd459j3n">https://tinyurl.com/yd459j3n</a>         |
| Electrical: Insteon Hub  | -                | 1        | Ea.    | -                  | -                  | \$134.00              | \$134.00            | YES                   | <a href="https://tinyurl.com/y8e7uopn">https://tinyurl.com/y8e7uopn</a>         |
| Electrical: Leviton 20 Amp 125-Volt Duplex Self-Temp Resistant/Weather Resistant GFCI Outlet,                | -                | 104      | Ea.    | -                  | -                  | \$42.00               | \$4,368.00          | YES                   | <a href="https://tinyurl.com/yba6gf3f">https://tinyurl.com/yba6gf3f</a>         |
| Electrical: 20 Amp Tamper Resistant Duplex Outlet, White   | -                | 488      | Ea.    | -                  | -                  | \$6.00                | \$2,928.00          | YES                   | <a href="https://tinyurl.com/yas6bdr4">https://tinyurl.com/yas6bdr4</a>         |
| Electrical: Homeline 100 Amp 20-Space 40-Circuit Indoor Main Breaker Plug-On Neutral Load Center w/          | -                | 25       | Ea.    | -                  | -                  | \$114.00              | \$2,850.00          | YES                   | <a href="https://tinyurl.com/y8cfzwnn">https://tinyurl.com/y8cfzwnn</a>         |
| Electrical: Leviton 88003 Electrical Wall Plate, Duplex Receptacle, 1-Gang - White (10-pack)                 | -                | 60       | Ea.    | -                  | -                  | \$4.00                | \$240.00            | YES                   | <a href="https://tinyurl.com/yaww6tdt">https://tinyurl.com/yaww6tdt</a>         |
| Electrical: 20 Amp Commercial Grade Self Grounding Duplex Outlet Floor Box Brass                             | -                | 110      | Ea.    | -                  | -                  | \$99.00               | \$10,890.00         | YES                   | <a href="https://tinyurl.com/y7v3lgef">https://tinyurl.com/y7v3lgef</a>         |
| Electrical: Homeline 40 Amp Single Pole GFCI Circuit Breaker   | -                | 1        | Ea.    | -                  | -                  | \$163.00              | \$163.00            | YES                   | <a href="https://tinyurl.com/yawwag5g">https://tinyurl.com/yawwag5g</a>         |
| Electrical: Transformer, 240V, 480V Wye/277V, 15KVA  | -                | 1        | Ea.    | -                  | -                  | \$2,324.00            | \$2,324.00          | YES                   | <a href="https://tinyurl.com/ybqht2j">https://tinyurl.com/ybqht2j</a>           |
| Electrical: Homeline 20 Amp AFCI Single Pole Circuit Breaker   | -                | 1        | Ea.    | -                  | -                  | \$74.00               | \$74.00             | YES                   | <a href="https://tinyurl.com/yqcq5csu">https://tinyurl.com/yqcq5csu</a>         |
| Elevator: Hydraulic passenger elevators and options, hyd. pass, base unit, 1500 lb., 100 fpm, 2 stop, stc    | 14 24 23.10 2050 | 1        | Ea.    | \$60,500.00        | \$59,692.99        | \$59,692.99           | \$59,692.99         | NO                    |   |
| Mechanical: Ductwork   | -                | 4000     | L.F.   | -                  | -                  | \$35.00               | \$140,000.00        | YES                   | based on quote from J.W. and D.E. Ryan  |
| Mechanical: Piping   | -                | -        | -      | -                  | -                  | -                     | \$105,100.00        | YES                   | based on quote from J.W. and D.E. Ryan  |
| Mechanical: Piping insulation  | -                | -        | -      | -                  | -                  | -                     | \$48,515.00         | YES                   | based on quote from J.W. and D.E. Ryan  |
| Mechanical: Equipment costs  | -                | -        | -      | -                  | -                  | -                     | \$263,020.00        | YES                   | based on quote from J.W. and D.E. Ryan  |
| Mechanical: Condensate drains  | -                | -        | -      | -                  | -                  | -                     | \$18,450.00         | YES                   | based on quote from J.W. and D.E. Ryan  |
| Mechanical: Bore hole excavation and installation  | -                | -        | -      | -                  | -                  | -                     | \$446,250.00        | YES                   | based on quote from J.W. and D.E. Ryan, 35 bore holes at 500 ft. deep           |
| Mechanical: Startup and commissioning services for 1 year  | -                | -        | -      | -                  | -                  | -                     | \$20,400.00         | YES                   | based on quote from J.W. and D.E. Ryan  |
| Fire protection: Portable fire extinguishers, CO2, with hose and "H" horn, 15 lb.                            | 10 44 16.13 0160 | 13       | Ea.    | \$380.00           | \$374.93           | \$4,874.11            | \$4,874.11          | NO                    |   |
| Fire protection: Fire panel system   | -                | 71595    | S.F.   | -                  | -                  | \$6.00                | \$429,570.00        | YES                   | based on national averages  |
| Fire protection: Automatic sprinkler system  | -                | 71595    | S.F.   | -                  | -                  | \$3.00                | \$214,785.00        | YES                   | based on national averages  |
| Fire protection: Smoke and CO2 detectors   | -                | 65       | -      | -                  | -                  | \$60.00               | \$3,900.00          | YES                   | <a href="https://tinyurl.com/y6uwwz58">https://tinyurl.com/y6uwwz58</a>         |
| Ventilation: Ventacity VS 500 SQ Equipment + Install   | -                | 25       | Ea.    | -                  | -                  | \$14,400.00           | \$360,000.00        | YES                   | based on quote from J.W. and D.E. Ryan  |
| Ventilation: Ventacity VS 3000 Equipment + Install   | -                | 5        | Ea.    | -                  | -                  | \$90,000.00           | \$450,000.00        | YES                   | based on quote from J.W. and D.E. Ryan  |
| Contingency for lighting, wiring, and plumbing   | -                | -        | -      | -                  | -                  | -                     | \$1,000,000.00      | YES                   | We added this line to include items that are outside of the scope of our design |
|  |                  |          |        |                    |                    |                       |                     |                       |   |
| <b>Structure</b>   |                  |          |        | <b>\$265.95</b>    | <b>\$262.40</b>    | <b>\$1,457,969.44</b> | <b>\$262.40</b>     | <b>\$1,457,969.44</b> |   |
| Structure: Bracing, shear wall X-bracing, per 10' x 10' bay, one face, metal strap, 20 ga. X 6" wide         | 05 41 13.05      | 30       | Ea.    | \$95.00            | \$93.73            | \$2,811.98            | \$2,811.98          | NO                    |   |
| Structure: Columns, structural, steel, concrete filled, extra strong pipe, 8" diameter                       | 05 12 23.17 0940 | 8122     | L.F.   | \$90.50            | \$89.29            | \$725,236.29          | \$725,236.29        | NO                    |   |
| Structure: Structural steel members, shop fab'd for 100-ton, 1-2 story project, bolted connections, bea      | 05 12 23.75 1520 | 11179.25 | L.F.   | \$64.00            | \$63.15            | \$705,928.32          | \$705,928.32        | NO                    |   |
| Structure: Open web joists, K series, 30' to 50' spans, 26K10, 13.8 lb./L.F.                                 | 05 21 19.10 0640 | 1478.25  | L.F.   | \$16.45            | \$16.23            | \$23,992.85           | \$23,992.85         | NO                    |   |