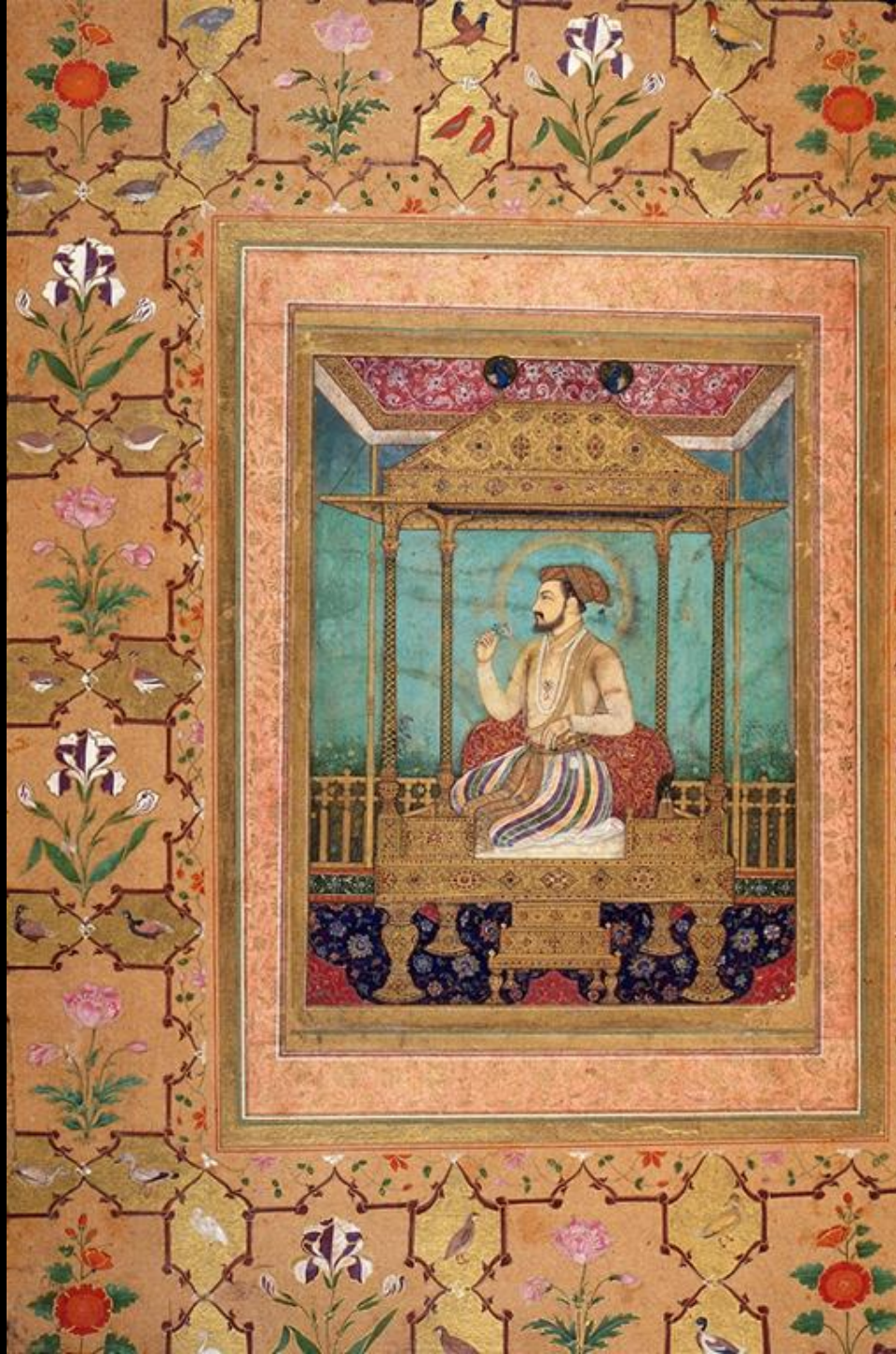


HARC0227: Indian Painting

Shah Jahan: the Ruler of the World



Shah Jahan on Peacock Throne, attributed to Govardhan, , Mughal, Shah Jahan period, ca. 1635 opaque watercolor on paper, folio: 14-1/4 x 10 in. (Harvard University Art Museums)

Mughal dynasty, from Central Asia, descended from Timur/Tamerlane and Chinghiz (Genghis) Khan (1526-1857)

-Babur, defeated Lodis in 1525

-Humayun (r.1530-56)

-Akbar (r.1556-1605)

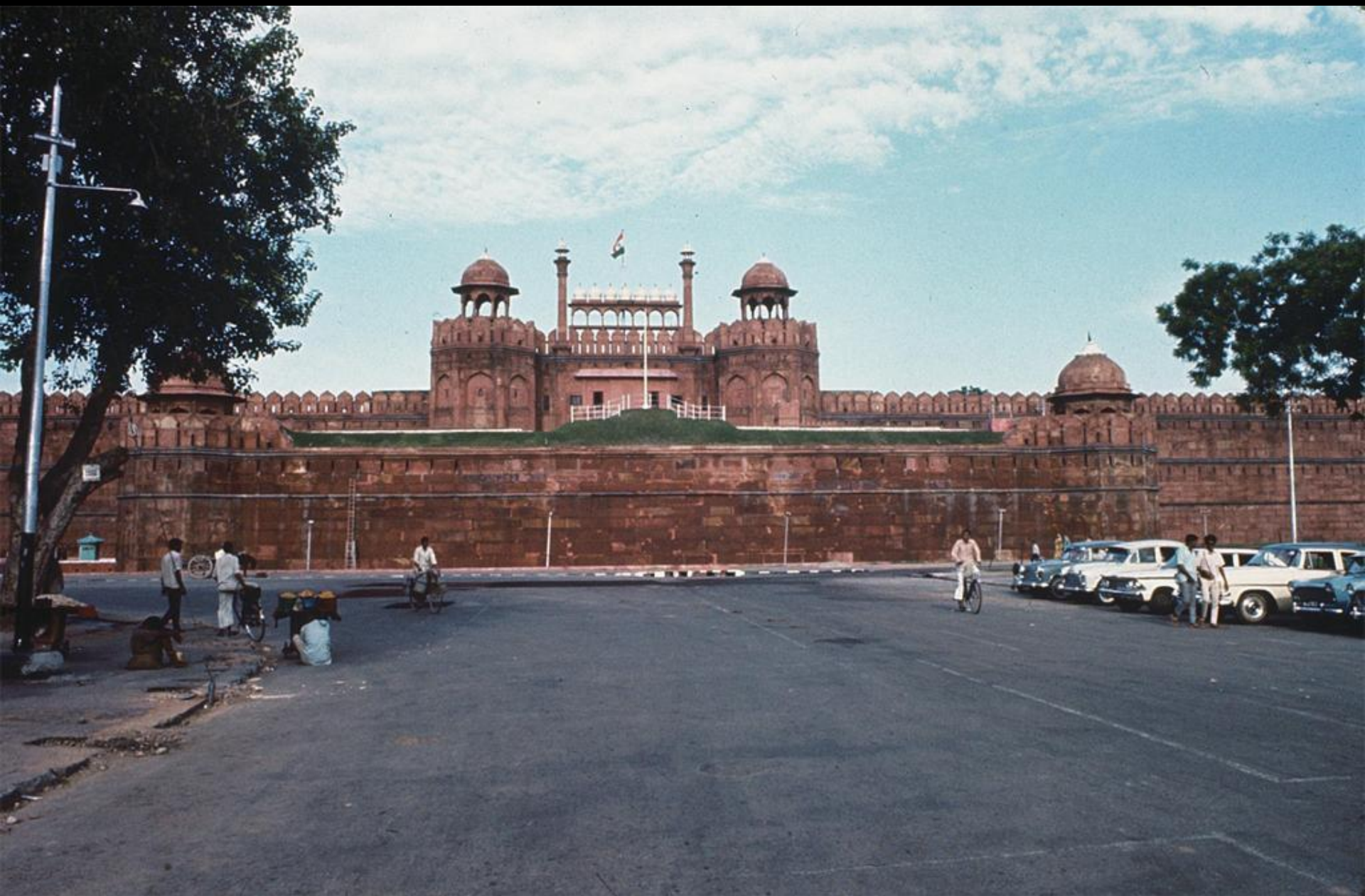
-Jahangir (Salim, b.1569), (r. 1605-1627)

-**Shah Jahan (Khurram) (b. 1592), (r.1627-1658)**



لیک در معنی بر ویشان کند پادشاه
 آریه در صورت شمان از پدرش قیام





View of Red Fort, Delhi ("Shajahanabad), 1639-1648



Diwan-i-Khas, Hall of Private Audience



Diwan-i-Am, Hall of Public Audience















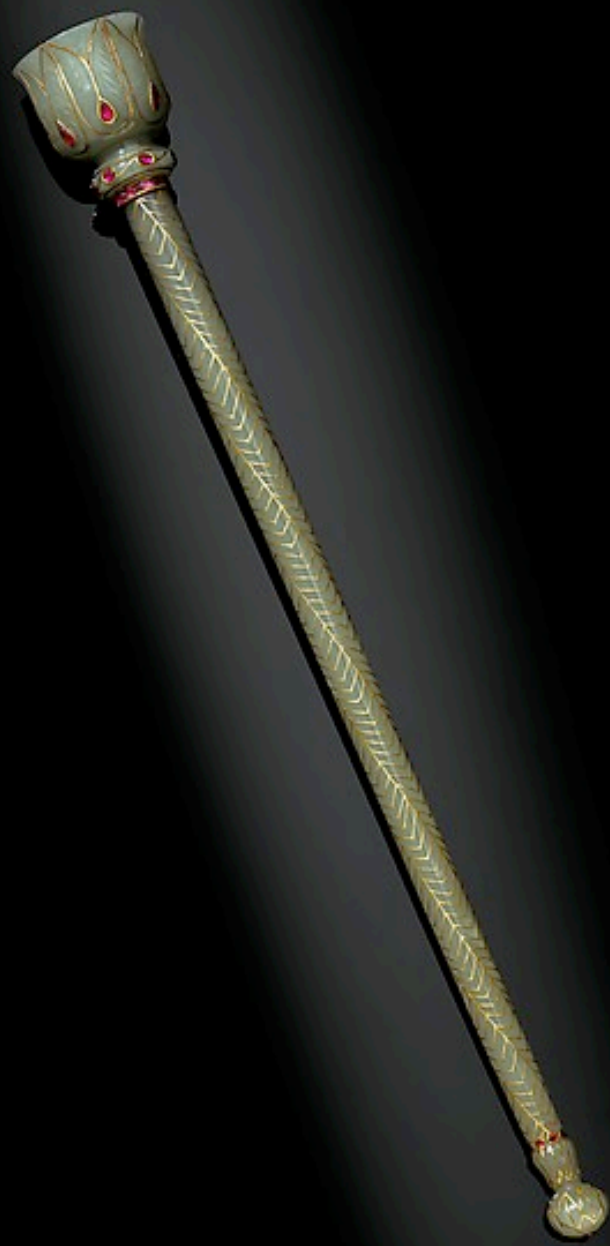








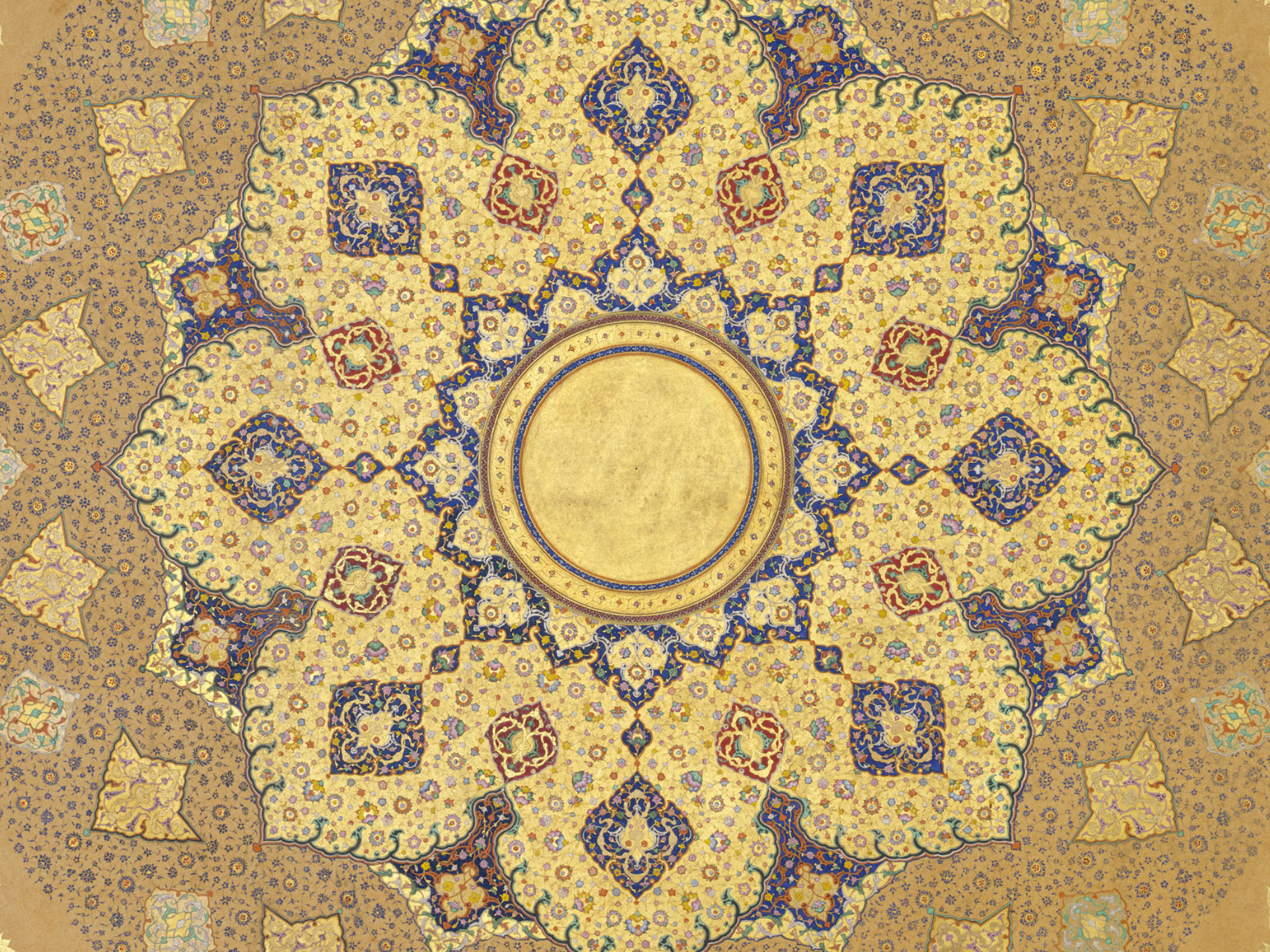








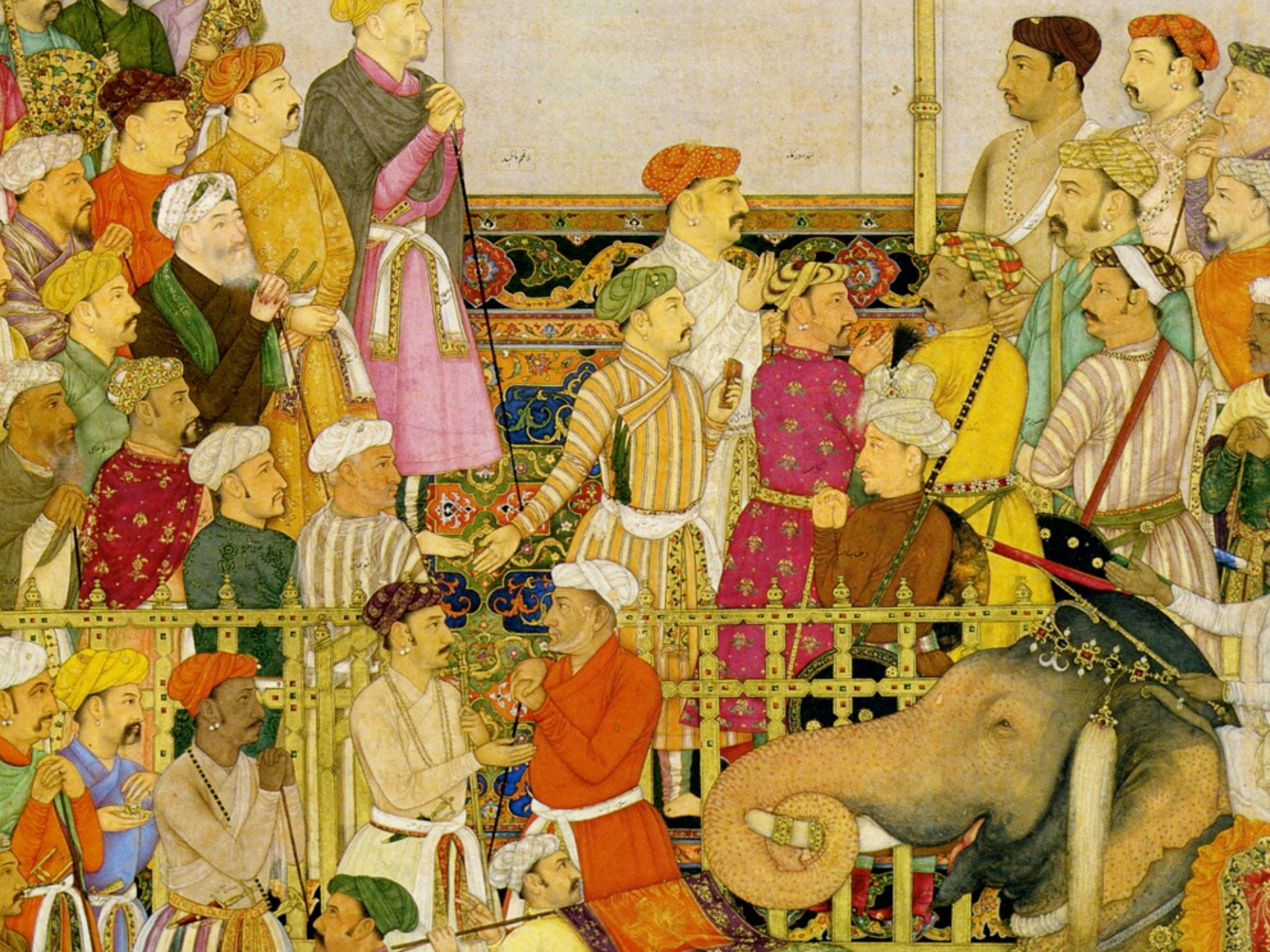






Portraiture

Hierarchical
principles





برنجی کپیس مراد









Taj Mahal (mausoleum for Mumtaz Mahal, died 1631), marble and inlay, Agra, Mughal, Shah Jahan period, begun 1632-1648













